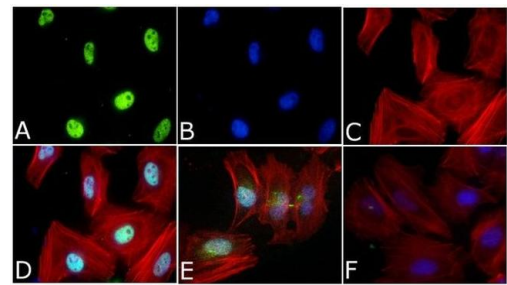


Phospho-SMAD2 (Ser465, Ser467) Polyclonal Antibody

Product Details	
Size	100 µL
Species Reactivity	Human, Mouse
Published Species	Human, Mouse
Host/Isotype	Rabbit / IgG
Class	Polyclonal
Type	Antibody
Conjugate	Unconjugated
Immunogen	The antiserum was produced against a chemically synthesized phosphopeptide derived from a region of human Smad2 that contains serines 465 and 467. The sequence is conserved in mouse and rat.
Form	Liquid
Purification	Antigen affinity chromatography
Storage buffer	Dulbecco's PBS, pH 7.3, with 1mg/mL BSA
Contains	0.05% sodium azide
Storage conditions	-20°C
RRID	AB_2533614

Applications	Tested Dilution	Publications
Western Blot (WB)	1:1,000	15 Publications
Immunohistochemistry (IHC)	-	14 Publications
Immunohistochemistry (Paraffin) (IHC (P))	1:20-1:200	1 Publication
Immunocytochemistry (ICC/IF)	1:250	5 Publications
ChIP assay (ChIP)	10 µL	-

Product Images For Phospho-SMAD2 (Ser465, Ser467) Polyclonal Antibody

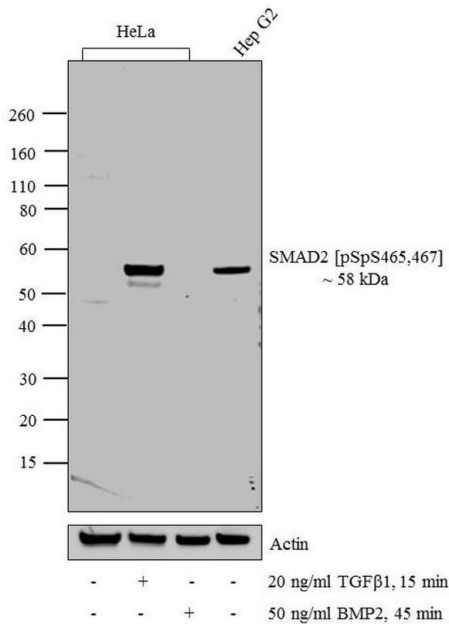


Phospho-SMAD2 (Ser465, Ser467) Antibody (44-244G)

Modulation of expression of target protein by cell treatment demonstrates antibody specificity. Immunofluorescence analysis of Phospho-SMAD2 (Ser465, Ser467) using Phospho-SMAD2 (Ser465, Ser467) Rabbit Polyclonal Antibody (Product # 44-244G) shows nuclear localization of Phospho-Aurora A (Thr288) in Jurkat cells treated with hydrogen peroxide. {TM}

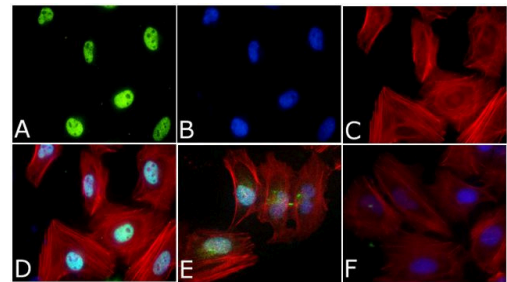
Phospho-SMAD2 (Ser465, Ser467) Antibody (44-244G) in WB

Western blot analysis of SMAD2 (pS465/pS467) was performed by loading 20 µg of HeLa (lane1), HeLa treated for 15 minutes with 20 ng/mL TGFbeta1 (lane2), HeLa treated for 45 minutes with 50 ng/mL BMP2 (lane3) and Hep G2 (lane4) cell lysate using Novex® NuPAGE® 4-12 % Bis-Tris gel (Product # NP0322BOX), XCell SureLock™ Electrophoresis System (Product # EI0002), Novex® Sharp Pre-Stained Protein Standard (LC5800), and iBlot® 2 Dry Blotting System (IB21001). Proteins were transferred to a nitrocellulose membrane and blocked with 5 % skim milk for 1 hour at room temperature. SMAD2 (pS465 /pS467) was detected at ~ 58 kDa using SMAD2 (pS465/pS467) Rabbit Polyclonal Antibody (Product # 44-244G) at 1:1000 dilution in 5 % skim milk at 4° C overnight on a rocking platform. Goat Anti-Rabbit IgG - HRP Secondary Antibody (G21234) at 1:5000 dilution was used and chemiluminescent detection was performed using Pierce™ ECL Western Blotting Substrate (Product # 32106).



Phospho-SMAD2 (Ser465, Ser467) Antibody (44-244G) in ICC/IF

Immunofluorescent analysis of Phospho-SMAD2 pSer465/pSer467 Antibody was done on 70% confluent log phase HeLa cells. The cells were fixed with 4% paraformaldehyde for 15 minutes, permeabilized with 0.25% Triton™ X-100 for 10 minutes, and blocked with 5% BSA for 1 hour at room temperature. The cells were treated with TGF-beta1 (20 ng/mL) for 15 minutes and labeled with Phospho-SMAD2 pSer465/pSer467 Antibody (Product # 44-244G) at 1:250 dilution in 1% BSA and incubated for 3 hours at room temperature and then labeled with Alexa Fluor 488 Goat Anti-Rabbit IgG Secondary Antibody (Product # A-11008) at a dilution of 1:400 for 45 minutes at room temperature (Panel a: green). Nuclei (Panel b: blue) were stained with SlowFade® Gold Antifade Mountant with DAPI (Product # S36938). F-actin (Panel c: red) was stained with Alexa Fluor 594 Phalloidin (Product # A12381). Panel d is a merged image showing Nuclear localization. Panel e showing merged image of untreated cells with less nuclear signals Panel f is a no primary antibody control. The images were captured at 40X magnification.



View more figures on thermofisher.com

Western Blot (15)

Pharmaceuticals (Basel, Switzerland) Fucoidan-Mediated Inhibition of Fibrotic Properties in Oral Submucous Fibrosis via the MEG3/miR-181a/Egr1 Axis. "44-244G was used in Western Blotting to investigate the anti-fibrotic effect of fucoidan on oral fibrosis." Authors: Fang CY,Chen SH,Huang CC,Liao YW,Chao SC,Yu CC	Year 2022 Species Human
Frontiers in endocrinology Differential Role of Smad2 and Smad3 in the Acquisition of an Endovascular Trophoblast-Like Phenotype and Preeclampsia. "Published figure using Phospho-SMAD2 (Ser465, Ser467) polyclonal antibody (Product # 44-244G) in Immunohistochemistry" Authors: Brki J,Dunk C,Shan Y,O'Brien JA,Lye P,Qayyum S,Yang P,Matthews SG,Lye SJ,Peng C	Year 2021 Species Human Dilution 1:500

View more WB references on thermofisher.com

Immunohistochemistry (14)

JCI insight Protein phosphatase PPM1A inhibition attenuates osteoarthritis via regulating TGF-/Smad2 signaling in chondrocytes. "44-244G was used in Immunohistochemistry-immunofluorescence to identify PPM1A as a pivotal regulator of cartilage homeostasis and demonstrated that PPM1A inhibition attenuates OA progression via regulating TGF-/SMAD2 signaling in chondrocytes and provided PPM1A as a potential target for OA treatment." Authors: Ge Q,Shi Z,Zou KA,Ying J,Chen J,Yuan W,Wang W,Xiao L,Lin X,Chen D,Feng XH,Wang PE,Tong P,Jin H	Year 2023 Species Human Dilution 1:300
The Journal of clinical investigation Targeting TGF- for treatment of osteogenesis imperfecta. "Published figure using Phospho-SMAD2 (Ser465, Ser467) polyclonal antibody (Product # 44-244G) in Immunohistochemistry" Authors: Song IW,Nagamani SC,Nguyen D,Grafe I,Sutton VR,Gannon FH,Munivez E,Jiang MM,Tran A,Wallace M,Esposito P,Musaad S,Strudthoff E,McGuire S,Thornton M,Shenava V,Rosenfeld S,Huang S,Shypailo R,Orwoll E,Lee B	Year 2022 Species Human

View more IHC references on thermofisher.com

More applications with references on thermofisher.com

- IHC (P) (1)
- ICC/IF (5)

For Research Use Only. Not for use in diagnostic procedures. Not for resale without express authorization. Products are warranted to operate or perform substantially in conformance with published Product specifications in effect at the time of sale, as set forth in the Production documentation, specifications and/or accompanying package inserts ("Documentation"). No claim of suitability for use in applications regulated by FDA is made. The warranty provided herein is valid only when used by properly trained individuals. Unless otherwise stated in the Documentation, this warranty is limited to one year from date of shipment when the Product is subjected to normal, proper and intended usage. This warranty does not extend to anyone other than the Buyer. Any model or sample furnished to Buyer is merely illustrative of the general type and quality of goods and does not represent that any Product will conform to such model or sample. NO OTHER WARRANTIES, EXPRESS OR IMPLIED, ARE GRANTED INCLUDING WITHOUT LIMITATION, IMPLIED WARRANTIES OF MERCHANTABILITY, FITNESS FOR ANY PARTICULAR PURPOSE, OR NON-INFRINGEMENT. BUYER'S EXCLUSIVE REMEDY FOR NON-CONFORMING PRODUCTS DURING THE WARRANTY PERIOD IS LIMITED TO REPAIR, REPLACEMENT OF OR REFUND FOR THE NON-CONFORMING PRODUCT(S) AT SELLER'S SOLE OPTION. THERE IS NO OBLIGATION TO REPAIR, REPLACE OR REFUND FOR PRODUCTS AS THE RESULT OF (i) ACCIDENT, DISASTER OR EVENT OF FORCE MAJEURE, (ii) MISUSE, FAULT OR NEGLIGENCE OF OR BY BUYER, (iii) USE OF THE PRODUCTS IN A MANNER FOR WHICH THEY WERE NOT DESIGNED, OR (iv) IMPROPER STORAGE AND HANDLING OF THE PRODUCTS. Unless otherwise expressly stated on the Product or in the documentation accompanying the Product, the Product is intended for research only and is not to be used for any other purpose, including without limitation, unauthorized commercial uses, in vitro diagnostic uses, ex vivo or in vivo therapeutic uses, or any type of consumption by or application to human or animals.