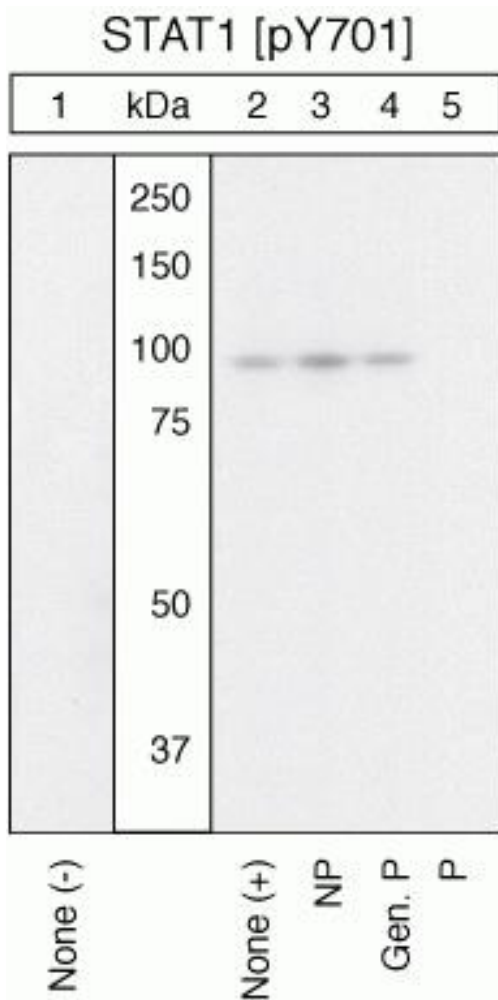


Phospho-STAT1 (Tyr701) Polyclonal Antibody

Product Details	
Size	100 µL
Species Reactivity	Human, Mouse, Rat
Published Species	Mouse
Host/Isotope	Rabbit / IgG
Class	Polyclonal
Type	Antibody
Conjugate	Unconjugated
Immunogen	The antiserum was produced against a chemically synthesized phosphopeptide derived from the region of mouse STAT1 that contains tyrosine 701.
Form	Liquid
Purification	Antigen affinity chromatography
Storage buffer	Dulbecco's PBS, pH 7.3, with 50% glycerol, 1mg/mL BSA
Contains	0.05% sodium azide
Storage Conditions	-20°C
RRID	AB_2533642

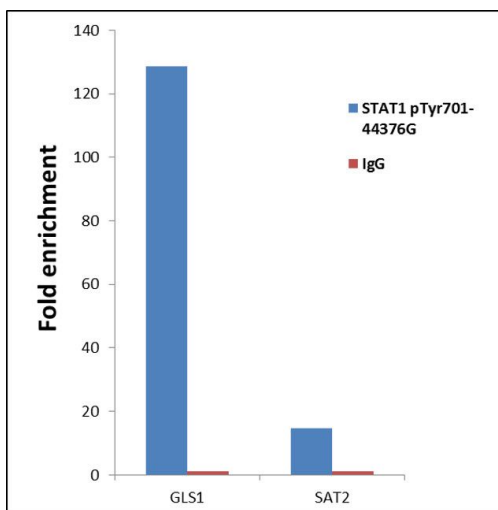
Applications	Tested	Dilution	Published
Western Blot (WB)	✓	1:1000	2 Publications
Dot blot (DB)	-	1:500	1 Publication
Miscellaneous PubMed (MISC)	-		1 Publication
ChIP assay (ChIP)	✓	10 µL	
Immunocytochemistry (ICC)	✓	1:100-1:500	
Immunofluorescence (IF)	✓	1:100-1:500	
Immunohistochemistry (Paraffin) (IHC (P))	✓	1:10-1:100	

Advanced Verification Data



Phospho-STAT1 (Tyr701) Antibody (44-376G)

Altered expression of proteins upon cell treatment demonstrates antibody specificity. Western blot of Phospho-STAT1 (Tyr701) using anti-STAT1 [pY701] Rabbit Polyclonal Antibody (Product # 44-376G), shows increase in expression Phospho-STAT1 (Tyr701) in 3T3L1 treated with LIF. Cell Treatment validation info.



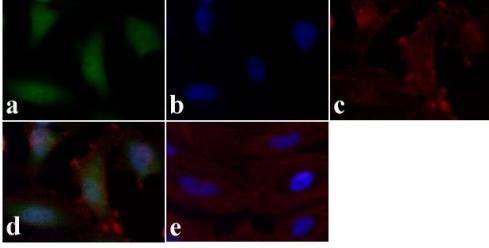
Phospho-STAT1 (Tyr701) Antibody (44-376G)

Antibody specificity was demonstrated through detection of enrichment of the target protein at specific gene loci. Chromatin Immunoprecipitation (ChIP) was performed using anti-STAT1 [pY701] Rabbit Polyclonal Antibody (Product # 44-376G) with relevant positive (GLS1) and negative target genes/ binding sites (SAT2) Relative expression validation info.

Product Images For Phospho-STAT1 (Tyr701) Polyclonal Antibody

Phospho-STAT1 (Tyr701) Antibody (44-376G) in IF

Immunofluorescence analysis of STAT1 (pY701) was done on 70% confluent log phase HeLa cells. The cells were fixed with 4% paraformaldehyde for 15 minutes, permeabilized with 0.25% Triton™ X-100 for 10 minutes, and blocked with 5% BSA for 1 hour at room temperature. The cells were labeled with STAT1 (pY701) Rabbit polyclonal Antibody (Product # 44-376G) at 2 µg/mL in 1% BSA and incubated for 3 hours at room temperature and then labeled with Alexa Fluor 488 Goat Anti-Rabbit IgG Secondary Antibody (Product # A-11008) at a dilution of 1:400 for 30 minutes at room temperature (Panel a: green). Nuclei (Panel b: blue) were stained with SlowFade® Gold Antifade Mountant DAPI (Product # S36938). F-actin (Panel c: red) was stained with Alexa Fluor 594 Phalloidin (Product # A12381). Panel d is a merged image showing cytoplasmic and nuclear localization. Panel e shows no primary antibody control. The images were captured at 20X magnification.



[View more figures on thermofisher.com](https://www.thermofisher.com)

4 References

Western Blot (2)

Autophagy

Common -chain cytokine signaling is required for macroautophagy induction during CD4+ T-cell activation.

"Published figure using Phospho-STAT1 (Tyr701) polyclonal antibody (Product # 44-376G) in Western Blot"

Authors: Botbol Y, Patel B, Macian F

Species
Not Applicable

Dilution
Not Cited

Year
2016

The Journal of endocrinology

Effects of leukemia inhibitory factor on 3T3-L1 adipocytes.

Authors: Hogan JC, Stephens JM

Species
Mouse

Dilution
Not Cited

Year
2005

Dot blot (1)

Scientific data

Comprehensive systems biology analysis of a 7-month cigarette smoke inhalation study in C57BL/6 mice.

"44-376G was used in reverse phase protein array to elucidate a 7-month cigarette smoke inhalation study in C57BL/6 mice through system biology analysis"

Authors: Ansari S, Baumer K, Boué S, Dijon S, Dulize R, Ekroos K, Elamin A, Foong C, Guedj E, Hoeng J, Ivanov NV, Krishnan S, Leroy P, Martin F, Merg C, Peck MJ, Peitsch MC, Phillips B, Schlage WK, Schneider T, Talikka M, Titz B, Vanscheeuwijck P, Veljkovic E, Vihervaara T, Vuillaume G, Woon CQ

Species
Not Applicable

Dilution
1:500

Year
2016

Miscellaneous PubMed (1)

Inflammation research : official journal of the European Histamine Research Society ... [et al.]

Transcriptional profiling and targeted proteomics reveals common molecular changes associated with cigarette smoke-induced lung emphysema development in five susceptible mouse strains.

"44-376G was used to develop computational tools based on reverse causal reasoning to study cigarette smoke-induced chronic pulmonary pathologies"

Authors: Cabanski M, Fields B, Boue S, Boukharov N, DeLeon H, Dror N, Geertz M, Guedj E, Iskandar A, Kogel U, Merg C, Peck MJ, Poussin C, Schlage WK, Talikka M, Ivanov NV, Hoeng J, Peitsch MC

Species
Not Applicable

Dilution
Not Cited

Year
2015

For Research Use Only. Not for use in diagnostic procedures. Not for resale without express authorization. Products are warranted to operate or perform substantially in conformance with published Product specifications in effect at the time of sale, as set forth in the Production documentation, specifications and/or accompanying package inserts ("Documentation"). No claim of suitability for use in applications regulated by FDA is made. The warranty provided herein is valid only when used by properly trained individuals. Unless otherwise stated in the Documentation, this warranty is limited to one year from date of shipment when the Product is subjected to normal, proper and intended usage. This warranty does not extend to anyone other than the Buyer. Any model or sample furnished to Buyer is merely illustrative of the general type and quality of goods and does not represent that any Product will conform to such model or sample. NO OTHER WARRANTIES, EXPRESS OR IMPLIED, ARE GRANTED INCLUDING WITHOUT LIMITATION, IMPLIED WARRANTIES OF MERCHANTABILITY, FITNESS FOR ANY PARTICULAR PURPOSE, OR NON INFRINGEMENT. BUYER'S EXCLUSIVE REMEDY FOR NON-CONFORMING PRODUCTS DURING THE WARRANTY PERIOD IS LIMITED TO REPAIR, REPLACEMENT OF OR REFUND FOR THE NON-CONFORMING PRODUCT(S) AT SELLER'S SOLE OPTION. THERE IS NO OBLIGATION TO REPAIR, REPLACE OR REFUND FOR PRODUCTS AS THE RESULT OF (I) ACCIDENT, DISASTER OR EVENT OF FORCE MAJEURE, (II) MISUSE, FAULT OR NEGLIGENCE OF OR BY BUYER, (III) USE OF THE PRODUCTS IN A MANNER FOR WHICH THEY WERE NOT DESIGNED, OR (IV) IMPROPER STORAGE AND HANDLING OF THE PRODUCTS. Unless otherwise expressly stated on the Product or in the documentation accompanying the Product, the Product is intended for research only and is not to be used for any other purpose, including without limitation, unauthorized commercial uses, in vitro diagnostic uses, ex vivo or in vivo therapeutic uses, or any type of consumption by or application to human or animals.