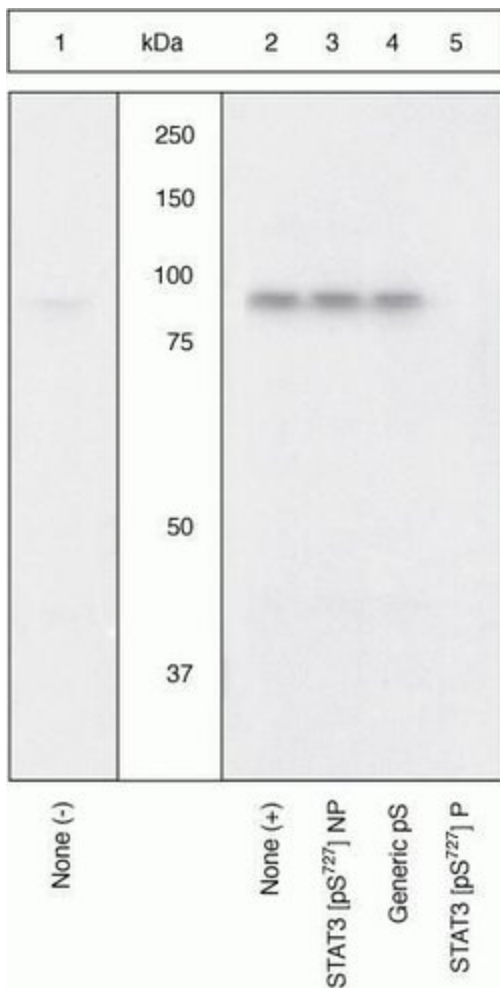


# Phospho-STAT3 (Ser727) Polyclonal Antibody

Product Details	
Size	100 µL
Species Reactivity	Human, Mouse, Rat
Published Species	Human, Mouse
Host/Isotype	Rabbit / IgG
Class	Polyclonal
Type	Antibody
Conjugate	Unconjugated
Immunogen	Synthetic phosphopeptide from human STAT3 containing serine 727. This region is conserved between human, mouse and rat.
Form	Liquid
Purification	Antigen affinity chromatography
Storage buffer	Dulbecco's PBS, pH 7.3, with 1mg/mL BSA, 50% glycerol
Contains	0.05% sodium azide
Storage Conditions	-20°C
RRID	AB_2533645

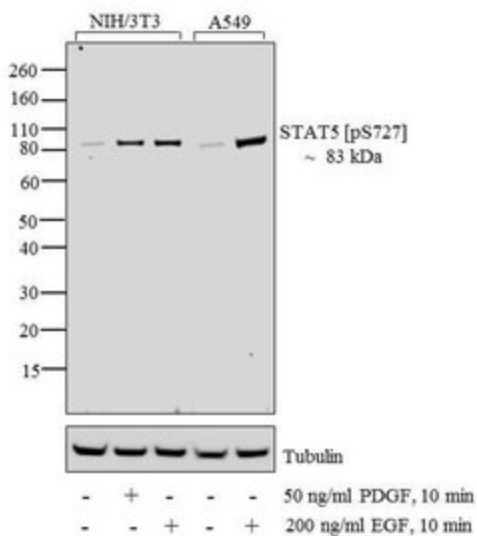
Applications	Tested Dilution	Publications
Western Blot (WB)	1:1000	10 Publications
Immunohistochemistry (IHC)	-	1 Publication
Immunohistochemistry (Paraffin) (IHC (P))	1:10-1:100	-
Immunoprecipitation (IP)	-	1 Publication
ChIP assay (ChIP)	10 µL	-
Immunocytochemistry (ICC/IF)	-	1 Publication

## Advanced Verification Data



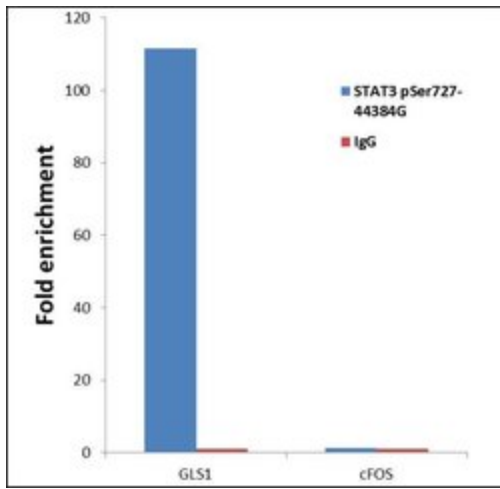
### Phospho-STAT3 (Ser727) Antibody (44-384G)

Altered expression of proteins upon cell treatment demonstrates antibody specificity. Western blot of Phospho-STAT3 (Ser727) using anti-STAT3 [pS727] Rabbit Polyclonal Antibody (Product # 44-384G), shows increase in expression Phospho-STAT3 (Ser727) in 3T3L1 treated with LIF. Cell treatment validation info.



### Phospho-STAT3 (Ser727) Antibody (44-384G)

Altered expression of proteins upon cell treatment demonstrates antibody specificity. Western blot of Phospho-STAT3 (Ser727) using anti-STAT3 [pS727] Rabbit Polyclonal Antibody (Product # 44-384G), shows increase in expression Phospho-STAT3 (Ser727) in NIH/3T3 cells treated with PDGF and A549 cells treated with EGF. Cell treatment validation info.



### Phospho-STAT3 (Ser727) Antibody (44-384G)

Antibody specificity was demonstrated through detection of enrichment of the target protein at specific gene loci. Chromatin Immunoprecipitation (ChIP) was performed using anti-STAT3 [pS727] Rabbit Polyclonal Antibody (Product # 44-384G) with relevant positive (GLS1) and negative target genes/ binding sites (cFOS) Relative expression validation info.

[View more figures on thermofisher.com](https://www.thermofisher.com)

## 13 References

### Western Blot (10)

Journal of molecular neuroscience : MN

#### The Cdk5/p35 kinases modulate leptin-induced STAT3 signaling.

"44-384G was used in western blot to show that Cdk5 modulates leptin signaling"

Authors: He Y,Kastin AJ,Hsuchou H,Pan W

**Species**  
Not Applicable

**Dilution**  
1:500

**Year**  
2009

The Journal of endocrinology

#### Overexpression of Wnt-1 in thyrocytes enhances cellular growth but suppresses transcription of the thyroperoxidase gene via different signaling mechanisms.

"44-384G was used in western blot to investigate the role of the Wnt/beta-catenin-signaling pathway in thyrocytes"

Authors: Kim WB,Lewis CJ,McCall KD,Malgor R,Kohn AD,Moon RT,Kohn LD

**Species**  
Not Applicable

**Dilution**  
Not Cited

**Year**  
2007

[View more WB references on thermofisher.com](#)

### Immunohistochemistry (1)

PloS one

#### Early-onset and robust amyloid pathology in a new homozygous mouse model of Alzheimer's disease.

Authors: Willuweit A,Velden J,Godemann R,Manook A,Jetzek F,Tintrup H,Kauselmann G,Zevnik B,Henriksen G,Drzezga A,Pohlner J,Schoor M,Kemp JA,von der Kammer H

**Species**  
Mouse

**Dilution**  
Not Cited

**Year**  
2009

### Immunoprecipitation (1)

The Journal of biological chemistry

#### The serine protease plasmin triggers expression of MCP-1 and CD40 in human primary monocytes via activation of p38 MAPK and janus kinase (JAK)/STAT signaling pathways.

Authors: Burysek L,Syrovets T,Simmet T

**Species**  
Human

**Dilution**  
Not Cited

**Year**  
2002

### More applications with references on thermofisher.com

### ICC/IF (1)

For Research Use Only. Not for use in diagnostic procedures. Not for resale without express authorization. Products are warranted to operate or perform substantially in conformance with published Product specifications in effect at the time of sale, as set forth in the Production documentation, specifications and/or accompanying package inserts ("Documentation"). No claim of suitability for use in applications regulated by FDA is made. The warranty provided herein is valid only when used by properly trained individuals. Unless otherwise stated in the Documentation, this warranty is limited to one year from date of shipment when the Product is subjected to normal, proper and intended usage. This warranty does not extend to anyone other than the Buyer. Any model or sample furnished to Buyer is merely illustrative of the general type and quality of goods and does not represent that any Product will conform to such model or sample. NO OTHER WARRANTIES, EXPRESS OR IMPLIED, ARE GRANTED INCLUDING WITHOUT LIMITATION, IMPLIED WARRANTIES OF MERCHANTABILITY, FITNESS FOR ANY PARTICULAR PURPOSE, OR NON INFRINGEMENT. BUYER'S EXCLUSIVE REMEDY FOR NON-CONFORMING PRODUCTS DURING THE WARRANTY PERIOD IS LIMITED TO REPAIR, REPLACEMENT OF OR REFUND FOR THE NON-CONFORMING PRODUCT(S) AT SELLER'S SOLE OPTION. THERE IS NO OBLIGATION TO REPAIR, REPLACE OR REFUND FOR PRODUCTS AS THE RESULT OF (I) ACCIDENT, DISASTER OR EVENT OF FORCE MAJEURE, (II) MISUSE, FAULT OR NEGLIGENCE OF OR BY BUYER, (III) USE OF THE PRODUCTS IN A MANNER FOR WHICH THEY WERE NOT DESIGNED, OR (IV) IMPROPER STORAGE AND HANDLING OF THE PRODUCTS. Unless otherwise expressly stated on the Product or in the documentation accompanying the Product, the Product is intended for research only and is not to be used for any other purpose, including without limitation, unauthorized commercial uses, in vitro diagnostic uses, ex vivo or in vivo therapeutic uses, or any type of consumption by or application to human or animals.