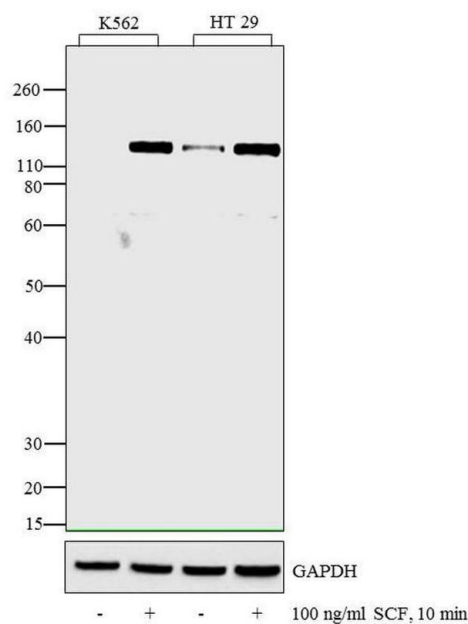


Phospho-c-Kit (Tyr936) Polyclonal Antibody

Product Details	
Size	100 µL
Species Reactivity	Human
Published Species	Human
Host/Isotype	Rabbit / IgG
Class	Polyclonal
Type	Antibody
Conjugate	Unconjugated
Immunogen	The antiserum was produced against a chemically synthesized phosphopeptide derived from a region of human c-Kit that contains tyrosine 936. The sequence is conserved in cow.
Form	Liquid
Purification	Antigen affinity chromatography
Storage buffer	Dulbecco's PBS, pH 7.3, with 1mg/mL BSA
Contains	0.05% sodium azide
Storage conditions	-20°C
RRID	AB_2533668

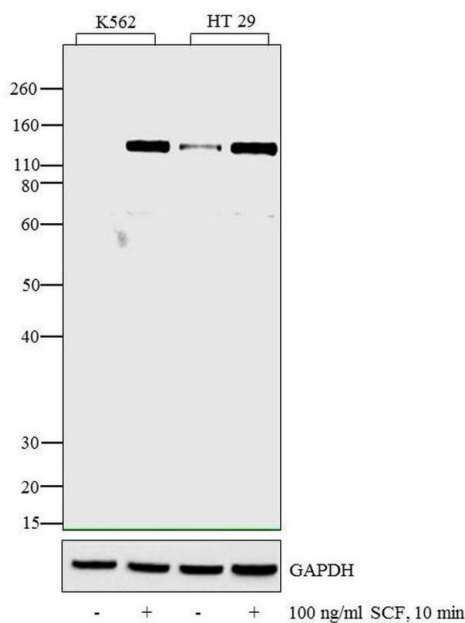
Applications	Tested Dilution	Publications
Western Blot (WB)	1:1,000	1 Publication
Immunocytochemistry (ICC/IF)	1:250	-

Product Images For Phospho-c-Kit (Tyr936) Polyclonal Antibody



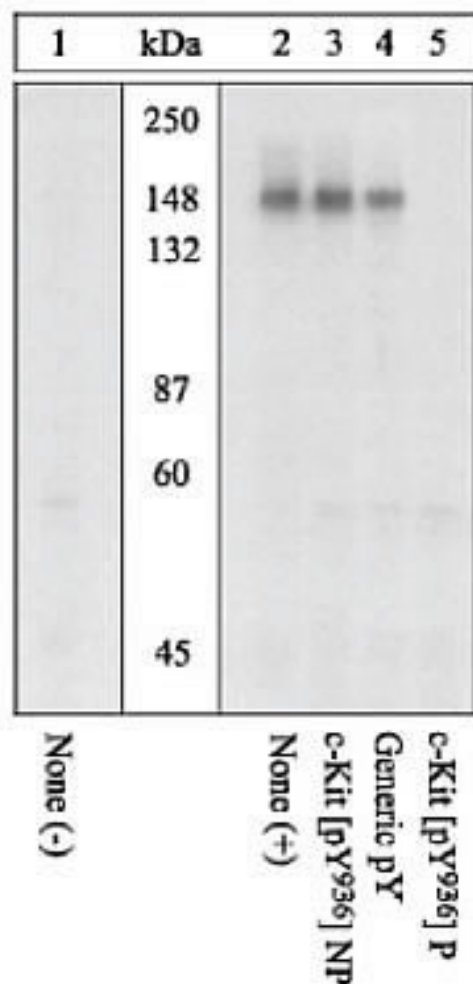
Phospho-c-Kit (Tyr936) Antibody (44-500G) in WB

Western blot analysis was performed on whole cell extracts (30 µg lysate) of K562 (Lane1), K562 treated for 10 minutes with 100 ng/mL of SCF (Lane 2), HT 29 (Lane 3) and HT 29 treated for 10 minutes with 100 ng/mL of SCF (lane 4). The blots were probed with Anti-c-Kit (pY936) Rabbit Polyclonal Antibody (Product # 44-500G, 1:250 dilution) and detected by chemiluminescence using Goat anti-Rabbit IgG (Heavy Chain) Superclonal™ Secondary Antibody, HRP conjugate (Product # A27036, 0.4 µg/mL, 1:2500 dilution). A 150 kDa band corresponding to c-Kit (pY936) was observed across cell lines tested. Known quantity of protein samples were electrophoresed using Novex® NuPAGE® 10 % Bis-Tris gel (Product # NP0302BOX), XCell SureLock™ Electrophoresis System (Product # EI0002), and Novex® Sharp Pre-Stained Protein Standard (Product # LC5800). Resolved proteins were then transferred onto a nitrocellulose membrane by wet transfer (Product # IB21001). The membrane was probed with the relevant primary and secondary Antibody following blocking with 5 % skimmed milk. Chemiluminescent detection was performed using Pierce™ ECL Western Blotting Substrate (Product # 32106).



Phospho-c-Kit (Tyr936) Antibody (44-500G)

Altered expression of proteins upon cell treatment demonstrates antibody specificity. Western blot of Phospho-c-Kit (Tyr936) using Anti-c-Kit [pY936] Rabbit Polyclonal Antibody (Product # 44-500G), shows increase in expression of Phospho-c-Kit (Tyr936) in K562 and HT 29 cells upon treatment with SCF. {TM}



Phospho-c-Kit (Tyr936) Antibody (44-500G) in WB

Peptide Competition: Extracts prepared from M07e cells left untreated (1) or treated (2-5) with SCF were resolved by SDS-PAGE on a 10% polyacrylamide gel and transferred to PVDF. Membranes were blocked with a 5% BSA-TBST buffer overnight at 4°C, then

[View more figures on thermofisher.com](https://www.thermofisher.com)

Western Blot (1)

PloS one	Year 2014
CADM1 controls actin cytoskeleton assembly and regulates extracellular matrix adhesion in human mast cells.	Species Human
"44-500G was used in western blot to study the role of CADM1 in cytoskeleton assembly and regulates extracellular matrix adhesion in human mast cells"	
Authors: Moiseeva EP,Straatman KR,Leyland ML,Bradding P	

For Research Use Only. Not for use in diagnostic procedures. Not for resale without express authorization. Products are warranted to operate or perform substantially in conformance with published Product specifications in effect at the time of sale, as set forth in the Production documentation, specifications and/or accompanying package inserts ("Documentation"). No claim of suitability for use in applications regulated by FDA is made. The warranty provided herein is valid only when used by properly trained individuals. Unless otherwise stated in the Documentation, this warranty is limited to one year from date of shipment when the Product is subjected to normal, proper and intended usage. This warranty does not extend to anyone other than the Buyer. Any model or sample furnished to Buyer is merely illustrative of the general type and quality of goods and does not represent that any Product will conform to such model or sample. NO OTHER WARRANTIES, EXPRESS OR IMPLIED, ARE GRANTED INCLUDING WITHOUT LIMITATION, IMPLIED WARRANTIES OF MERCHANTABILITY, FITNESS FOR ANY PARTICULAR PURPOSE, OR NON INFRINGEMENT. BUYER'S EXCLUSIVE REMEDY FOR NON-CONFORMING PRODUCTS DURING THE WARRANTY PERIOD IS LIMITED TO REPAIR, REPLACEMENT OF OR REFUND FOR THE NON-CONFORMING PRODUCT(S) AT SELLER'S SOLE OPTION. THERE IS NO OBLIGATION TO REPAIR, REPLACE OR REFUND FOR PRODUCTS AS THE RESULT OF (I) ACCIDENT, DISASTER OR EVENT OF FORCE MAJEURE, (II) MISUSE, FAULT OR NEGLIGENCE OF OR BY BUYER, (III) USE OF THE PRODUCTS IN A MANNER FOR WHICH THEY WERE NOT DESIGNED, OR (IV) IMPROPER STORAGE AND HANDLING OF THE PRODUCTS. Unless otherwise expressly stated on the Product or in the documentation accompanying the Product, the Product is intended for research only and is not to be used for any other purpose, including without limitation, unauthorized commercial uses, in vitro diagnostic uses, ex vivo or in vivo therapeutic uses, or any type of consumption by or application to human or animals.