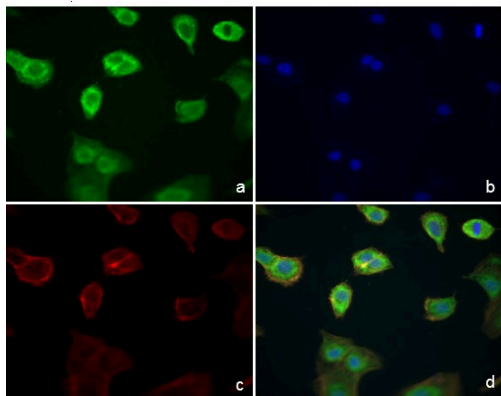


Phospho-ERK1/ERK2 (Thr185, Tyr187) Polyclonal Antibody, Alexa Fluor 488

Product Details	
Size	100 µL
Species Reactivity	Human, Mouse, Rat
Host/Isotope	Rabbit / IgG
Class	Polyclonal
Type	Antibody
Conjugate	Alexa Fluor® 488
Immunogen	Synthetic phosphopeptide derived from the region of ERK1 that contains threonine 202 (corresponding to 185 in ERK2) and tyrosine 204 (corresponding to 187 in ERK2)
Form	Liquid
Purification	purified
Storage buffer	Dulbecco's PBS, pH 7.3, with 0.2mg/mL BSA
Contains	0.05% sodium azide
Storage Conditions	-20°C
RRID	AB_2533718

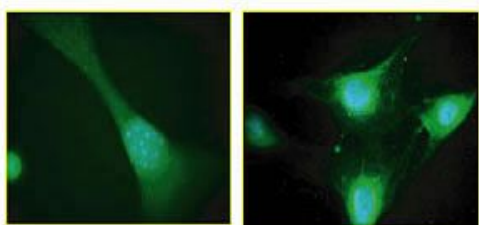
Applications	Tested	Dilution	Published
Immunocytochemistry (ICC)	✓	Assay Dependent	
Immunofluorescence (IF)	✓	Assay Dependent	

Product Images For Phospho-ERK1/ERK2 (Thr185, Tyr187) Polyclonal Antibody, Alexa Fluor 488



Phospho-ERK1/ERK2 (Thr185, Tyr187) Antibody (44-680A1) in ICC

Immunofluorescence analysis of Phospho-ERK1/ERK2 was performed on serum starved NIH3T3 cells and treated with PDGF (50 ng/mL for 15 minutes). Cells were fixed, permeabilized and labelled with anti-ERK1/2 (pTpY185/187) Alexa Fluor® 488 conjugate (Catalog # 44-680A1, 1:50 - 1:200 dilution). The conjugated antibody has shown a proper cytoplasmic localization in the assay. Panel a) shows representative cells that were stained for detection and cytoplasmic localization of anti-ERK1/2 (pTpY185/187)(green), Panel b) is stained for nuclei (blue) using SlowFade® Gold Antifade Mountant with DAPI (Product # S36938,). Panel c) represents cytoskeletal F-actin staining using Rhodamine Phalloidin (Product # R415, 1:300). Panel d) is a composite image of Panels a, b and c clearly demonstrating cytoplasmic localization. The images were captured at 20X magnification



A. NIH3T3 (Untreated)

B. NIH3T3+PDGF

Phospho-ERK1/ERK2 (Thr185, Tyr187) Antibody (44-680A1) in ICC

Immunofluorescence staining of NIH3T3 cells. Cells were serum starved and either untreated (A), or treated with PDGF (50 ng/mL for 15 minutes) (B). Cells were fixed prior to immunostaining with anti-ERK1/2 (pTpY185/187) Alexa Fluor® 488 conjugate.

For Research Use Only. Not for use in diagnostic procedures. Not for resale without express authorization. Products are warranted to operate or perform substantially in conformance with published Product specifications in effect at the time of sale, as set forth in the Production documentation, specifications and/or accompanying package inserts ("Documentation"). No claim of suitability for use in applications regulated by FDA is made. The warranty provided herein is valid only when used by properly trained individuals. Unless otherwise stated in the Documentation, this warranty is limited to one year from date of shipment when the Product is subjected to normal, proper and intended usage. This warranty does not extend to anyone other than the Buyer. Any model or sample furnished to Buyer is merely illustrative of the general type and quality of goods and does not represent that any Product will conform to such model or sample. NO OTHER WARRANTIES, EXPRESS OR IMPLIED, ARE GRANTED INCLUDING WITHOUT LIMITATION, IMPLIED WARRANTIES OF MERCHANTABILITY, FITNESS FOR ANY PARTICULAR PURPOSE, OR NON INFRINGEMENT. BUYER'S EXCLUSIVE REMEDY FOR NON-CONFORMING PRODUCTS DURING THE WARRANTY PERIOD IS LIMITED TO REPAIR, REPLACEMENT OF OR REFUND FOR THE NON-CONFORMING PRODUCT(S) AT SELLER'S SOLE OPTION. THERE IS NO OBLIGATION TO REPAIR, REPLACE OR REFUND FOR PRODUCTS AS THE RESULT OF (I) ACCIDENT, DISASTER OR EVENT OF FORCE MAJEURE, (II) MISUSE, FAULT OR NEGLIGENCE OF OR BY BUYER, (III) USE OF THE PRODUCTS IN A MANNER FOR WHICH THEY WERE NOT DESIGNED, OR (IV) IMPROPER STORAGE AND HANDLING OF THE PRODUCTS. Unless otherwise expressly stated on the Product or in the documentation accompanying the Product, the Product is intended for research only and is not to be used for any other purpose, including without limitation, unauthorized commercial uses, in vitro diagnostic uses, ex vivo or in vivo therapeutic uses, or any type of consumption by or application to human or animals.