

# Phospho-Tau (Ser404) Polyclonal Antibody

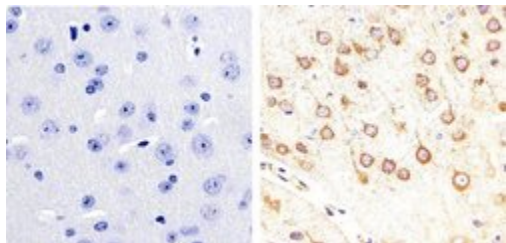
Product Details	
Size	100 µL
Species Reactivity	Human, Mouse, Rat
Published Species	Dog, Artificial Control, Tag, Rat, Bovine, Mouse, Human
Host/Isotype	Rabbit / IgG
Class	Polyclonal
Type	Antibody
Conjugate	Unconjugated
Immunogen	The antiserum was produced against a chemically synthesized phosphopeptide derived from a region of human Tau that contains serine 404. The sequence is conserved in mouse and rat.
Form	Liquid
Purification	Antigen affinity chromatography
Storage buffer	Dulbecco's PBS, pH 7.3, with 1mg/mL BSA, 50% glycerol
Contains	0.05% sodium azide
Storage Conditions	-20°C
RRID	AB_2533746

Applications	Tested Dilution	Publications
Immunohistochemistry (Paraffin) (IHC (P))	1:10-1:100	-
Western Blot (WB)	1:1000	20 Publications
ELISA (ELISA)	-	2 Publications
Immunohistochemistry (IHC)	-	1 Publication
Miscellaneous PubMed (Misc)	-	1 Publication

## Product Images For Phospho-Tau (Ser404) Polyclonal Antibody

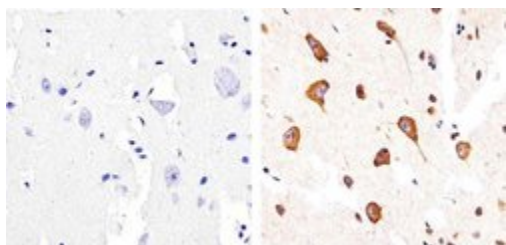
### Phospho-Tau (Ser404) Antibody (44-758G) in IHC (P)

Immunohistochemistry analysis of Phospho-Tau (pS404) showing staining in the cytoplasm of paraffin-embedded mouse brain tissue (right) compared to a negative control without primary antibody (left). To expose target proteins, antigen retrieval was performed using 10mM sodium citrate (pH 6.0), microwaved for 8-15 min. Following antigen retrieval, tissues were blocked in 3% H<sub>2</sub>O<sub>2</sub>-methanol for 15 min at room temperature, washed with ddH<sub>2</sub>O and PBS, and then probed with a Phospho-Tau (pS404) polyclonal antibody (Product # 44-758G) diluted in 3% BSA-PBS at a dilution of 1:20 overnight at 4°C in a humidified chamber. Tissues were washed extensively in PBST and detection was performed using an HRP-conjugated secondary antibody followed by colorimetric detection using a DAB kit. Tissues were counterstained with hematoxylin and dehydrated with ethanol and xylene to prep for mounting.



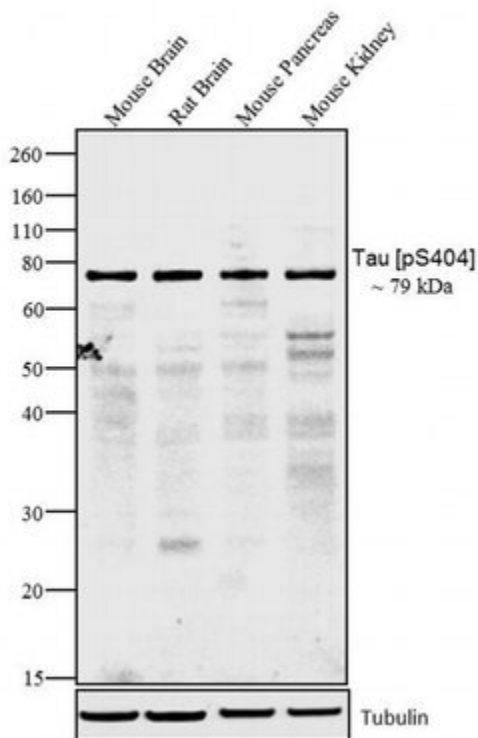
### Phospho-Tau (Ser404) Antibody (44-758G) in IHC (P)

Immunohistochemistry analysis of Phospho-Tau (pS404) showing staining in the cytoplasm of paraffin-embedded human brain tissue (right) compared to a negative control without primary antibody (left). To expose target proteins, antigen retrieval was performed using 10mM sodium citrate (pH 6.0), microwaved for 8-15 min. Following antigen retrieval, tissues were blocked in 3% H<sub>2</sub>O<sub>2</sub>-methanol for 15 min at room temperature, washed with ddH<sub>2</sub>O and PBS, and then probed with a Phospho-Tau (pS404) polyclonal antibody (Product # 44-758G) diluted in 3% BSA-PBS at a dilution of 1:50 overnight at 4°C in a humidified chamber. Tissues were washed extensively in PBST and detection was performed using an HRP-conjugated secondary antibody followed by colorimetric detection using a DAB kit. Tissues were counterstained with hematoxylin and dehydrated with ethanol and xylene to prep for mounting.



### Phospho-Tau (Ser404) Antibody (44-758G) in WB

Western blot analysis of Tau (pS404) was performed by loading 20 µg of Mouse Brain (lane1), Rat Brain (lane2), Mouse Pancreas (lane3) and Mouse Kidney (lane4) tissue lysate using Novex® NuPAGE® 4-12 % Bis-Tris gel (Product # NP0322BOX), XCell SureLock™ Electrophoresis System (Product # EI0002), Novex® Sharp Pre-Stained Protein Standard (LC5800), and iBlot® Dry Blotting System (IB21001). Proteins were transferred to a nitrocellulose membrane and blocked with 5 % skim milk for 1 hour at room temperature. Tau (pS404) was detected at ~79 kDa using Tau (pS404) Rabbit Polyclonal Antibody (Product # 44-758G) at 1:1000 dilution in 5 % skim milk at 4°C overnight on a rocking platform. Goat Anti-Rabbit IgG - HRP Secondary Antibody (G21234) at 1:5000 dilution was used and chemiluminescent detection was performed using Pierce™ ECL Western Blotting Substrate (Product # 32106).



View more figures on [thermofisher.com](https://thermofisher.com)

## 24 References

### Western Blot (20)

The Journal of neuroscience : the official journal of the Society for Neuroscience

#### MiR-26b, upregulated in Alzheimer's disease, activates cell cycle entry, tau-phosphorylation, and apoptosis in postmitotic neurons.

"Published figure using Phospho-Tau (Ser404) polyclonal antibody (Product # 44-758G) in Western Blot"

Authors: Absalon S,Kochanek DM,Raghavan V,Krichevsky AM

**Species**  
Not Applicable

**Dilution**  
Not Cited

**Year**  
2013

PloS one

#### Tau secretion is correlated to an increase of Golgi dynamics.

"Published figure using Phospho-Tau (Ser404) polyclonal antibody (Product # 44-758G) in Western Blot"

Authors: Mohamed NV,Desjardins A,Leclerc N

**Species**  
Not Applicable

**Dilution**  
Not Cited

**Year**  
2017

[View more WB references on thermofisher.com](#)

### Immunohistochemistry (1)

Journal of neuroinflammation

#### The behavioural and neuropathologic sexual dimorphism and absence of MIP-3 in tau P301S mouse model of Alzheimer's disease.

"Published figure using Phospho-Tau (Ser404) polyclonal antibody (Product # 44-758G) in Immunohistochemistry"

Authors: Sun Y,Guo Y,Feng X,Jia M,Ai N,Dong Y,Zheng Y,Fu L,Yu B,Zhang H,Wu J,Yu X,Wu H,Kong W

**Species**  
Artificial Control

**Dilution**  
Not Cited

**Year**  
2020

### ELISA (2)

Acta neuropathologica communications

#### A post-translational modification signature defines changes in soluble tau correlating with oligomerization in early stage Alzheimer's disease brain.

"Published figure using Phospho-Tau (Ser404) polyclonal antibody (Product # 44-758G) in ELISA"

Authors: Ercan-Herbst E,Ehrig J,Schöndorf DC,Behrendt A,Klaus B,Gomez Ramos B,Prat Oriol N,Weber C,Ehrnhoefer DE

**Species**  
Not Applicable

**Dilution**  
Not Cited

**Year**  
2019

### More applications with references on thermofisher.com

### Misc (1)

For Research Use Only. Not for use in diagnostic procedures. Not for resale without express authorization. Products are warranted to operate or perform substantially in conformance with published Product specifications in effect at the time of sale, as set forth in the Production documentation, specifications and/or accompanying package inserts ("Documentation"). No claim of suitability for use in applications regulated by FDA is made. The warranty provided herein is valid only when used by properly trained individuals. Unless otherwise stated in the Documentation, this warranty is limited to one year from date of shipment when the Product is subjected to normal, proper and intended usage. This warranty does not extend to anyone other than the Buyer. Any model or sample furnished to Buyer is merely illustrative of the general type and quality of goods and does not represent that any Product will conform to such model or sample. NO OTHER WARRANTIES, EXPRESS OR IMPLIED, ARE GRANTED INCLUDING WITHOUT LIMITATION, IMPLIED WARRANTIES OF MERCHANTABILITY, FITNESS FOR ANY PARTICULAR PURPOSE, OR NON INFRINGEMENT. BUYER'S EXCLUSIVE REMEDY FOR NON-CONFORMING PRODUCTS DURING THE WARRANTY PERIOD IS LIMITED TO REPAIR, REPLACEMENT OF OR REFUND FOR THE NON-CONFORMING PRODUCT(S) AT SELLER'S SOLE OPTION. THERE IS NO OBLIGATION TO REPAIR, REPLACE OR REFUND FOR PRODUCTS AS THE RESULT OF (I) ACCIDENT, DISASTER OR EVENT OF FORCE MAJEURE, (II) MISUSE, FAULT OR NEGLIGENCE OF OR BY BUYER, (III) USE OF THE PRODUCTS IN A MANNER FOR WHICH THEY WERE NOT DESIGNED, OR (IV) IMPROPER STORAGE AND HANDLING OF THE PRODUCTS. Unless otherwise expressly stated on the Product or in the documentation accompanying the Product, the Product is intended for research only and is not to be used for any other purpose, including without limitation, unauthorized commercial uses, in vitro diagnostic uses, ex vivo or in vivo therapeutic uses, or any type of consumption by or application to human or animals.