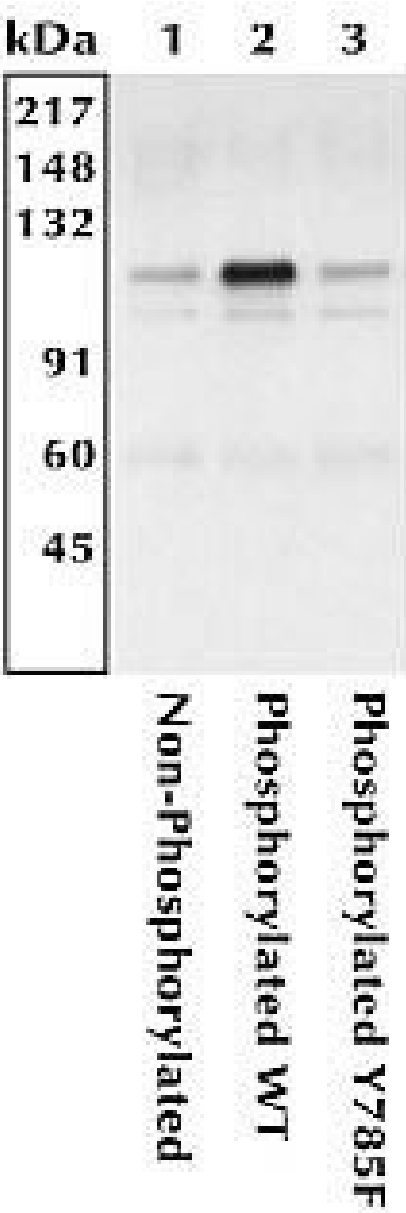


# Phospho-CD61 (Tyr785) Polyclonal Antibody

Product Details	
Size	100 µL
Species Reactivity	Human
Published Species	Cat, Mouse
Host/Isotype	Rabbit / IgG
Class	Polyclonal
Type	Antibody
Conjugate	Unconjugated
Immunogen	The antiserum was produced against a chemically synthesized phosphopeptide derived from the c-terminus of the Integrin beta-3 receptor
Form	Liquid
Purification	Antigen affinity chromatography
Storage buffer	Dulbecco's PBS, pH 7.3, with 1mg/mL BSA
Contains	0.05% sodium azide
Storage conditions	-20°C
RRID	AB_2533785

Applications	Tested Dilution	Publications
Western Blot (WB)	1:1,000	2 Publications
Immunoprecipitation (IP)	Assay-dependent	-

Product Images For Phospho-CD61 (Tyr785) Polyclonal Antibody



**Phospho-CD61 (Tyr785) Antibody (44-878) in IP**  
Western Blot: K562 cells transfected with human Integrin v and wild-type (WT) or mutant (Y785F) human Integrin 3 were analyzed by immunoprecipitating the Integrin.

Western Blot (2)

<p>Proceedings of the National Academy of Sciences of the United States of America</p> <p><b>Cellular integrins function as entry receptors for human cytomegalovirus via a highly conserved disintegrin-like domain.</b></p> <p>Authors: Feire AL,Koss H,Compton T</p>	<p>Year 2004</p> <p>Species Mouse</p>
<p>Journal of molecular and cellular cardiology</p> <p><b>Focal complex formation in adult cardiomyocytes is accompanied by the activation of beta3 integrin and c-Src.</b></p> <p>Authors: Willey CD,Balasubramanian S,Rodríguez Rosas MC,Ross RS,Kuppuswamy D</p>	<p>Year 2003</p> <p>Species Cat</p>

For Research Use Only. Not for use in diagnostic procedures. Not for resale without express authorization. Products are warranted to operate or perform substantially in conformance with published Product specifications in effect at the time of sale, as set forth in the Production documentation, specifications and/or accompanying package inserts ("Documentation"). No claim of suitability for use in applications regulated by FDA is made. The warranty provided herein is valid only when used by properly trained individuals. Unless otherwise stated in the Documentation, this warranty is limited to one year from date of shipment when the Product is subjected to normal, proper and intended usage. This warranty does not extend to anyone other than the Buyer. Any model or sample furnished to Buyer is merely illustrative of the general type and quality of goods and does not represent that any Product will conform to such model or sample. NO OTHER WARRANTIES, EXPRESS OR IMPLIED, ARE GRANTED INCLUDING WITHOUT LIMITATION, IMPLIED WARRANTIES OF MERCHANTABILITY, FITNESS FOR ANY PARTICULAR PURPOSE, OR NON INFRINGEMENT. BUYER'S EXCLUSIVE REMEDY FOR NON-CONFORMING PRODUCTS DURING THE WARRANTY PERIOD IS LIMITED TO REPAIR, REPLACEMENT OF OR REFUND FOR THE NON-CONFORMING PRODUCT(S) AT SELLER'S SOLE OPTION. THERE IS NO OBLIGATION TO REPAIR, REPLACE OR REFUND FOR PRODUCTS AS THE RESULT OF (I) ACCIDENT, DISASTER OR EVENT OF FORCE MAJEURE, (II) MISUSE, FAULT OR NEGLIGENCE OF OR BY BUYER, (III) USE OF THE PRODUCTS IN A MANNER FOR WHICH THEY WERE NOT DESIGNED, OR (IV) IMPROPER STORAGE AND HANDLING OF THE PRODUCTS. Unless otherwise expressly stated on the Product or in the documentation accompanying the Product, the Product is intended for research only and is not to be used for any other purpose, including without limitation, unauthorized commercial uses, in vitro diagnostic uses, ex vivo or in vivo therapeutic uses, or any type of consumption by or application to human or animals.