

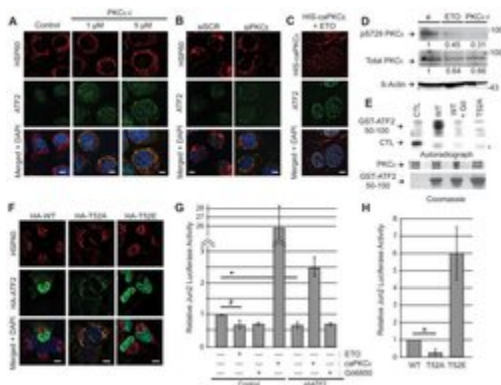
Phospho-PKC epsilon (Ser729) Polyclonal Antibody

Product Details	
Size	100 µL
Species Reactivity	Human, Mouse
Published Species	Virus, Human
Host/Isotype	Rabbit / IgG
Class	Polyclonal
Type	Antibody
Conjugate	Unconjugated
Immunogen	The antiserum was produced against a chemically synthesized phosphopeptide derived from a region of human PKCe that contains serine 729. The sequence is conserved in mouse and rat.
Form	Liquid
Purification	Antigen affinity chromatography
Storage buffer	Dulbecco's PBS, pH 7.3, with 1mg/mL BSA, 50% glycerol
Contains	0.05% sodium azide
Storage conditions	-20°C
RRID	AB_2533816

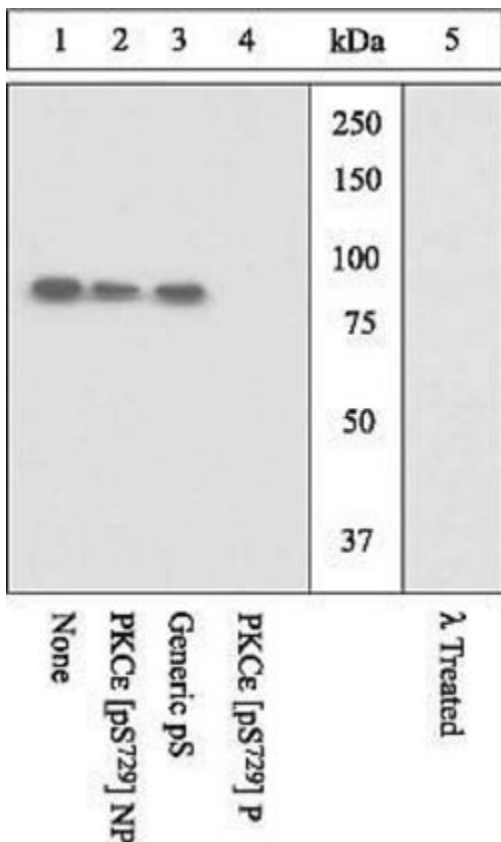
Applications	Tested Dilution	Publications
Western Blot (WB)	1:1,000	3 Publications

Phospho-PKC epsilon (Ser729) Antibody (44-977G)

Figure 3 PKCepsilon phosphorylation of ATF2 on Thr52 negatively regulates its mitochondrial localization. (See also Figure S3) Coverslip-grown SCC9 cells were immunofluorescently stained with indicated antibodies after: A) overnight treatment with 1 or 5 muM PKCepsilon translocation inhibitor (PKCepsilon-i); B) overnight treatment with 20 nM scrambled control (siSC) or PKCepsilon-targeted (siPKCepsilon) siRNA; C) transfection with HIS-tagged constitutively active PKCepsilon (caPKCepsilon, red) and treatment with 5 muM etoposide (ETO, overnight). D) SCC9 cells treated overnight with ETO or 5 muM PKCepsilon translocation inhibitor (PKCepsilon-i) were lysed and subject to immunoblot analysis with indicated antibodies. E) In vitro PKCepsilon kinase assay with Millipore control peptide (CTL), purified GST-ATF2 50-100aa WT (WT), GST-ATF2 50-100aa WT + PKCepsilon catalytic inhibitor, Go6850 (WT+Go) (3) or GST-ATF2 50-100aa T52A (52A) as substrate. *: non-specific bands. Coomassie-stained gel (left) and autoradiograph (right) are displayed as indicated. F) Coverslip-grown SCC9 cells were transfected with HA-tagged wild-type ATF2 (WT), ATF2 T52A or ATF2 T52E , and subsequently immunofluorescently stained with indicated antibodies. G) SCC9 control or ATF2 knocked-down cells (shATF2) were transfected with Jun2 promoter-luciferase construct and either empty vector (EV) or caPKCepsilon were assayed for luciferase activity before and after overnight ETO or Go6850 (2 muM) treatment. *: p = Cell treatment validation info.



Product Images For Phospho-PKC epsilon (Ser729) Polyclonal Antibody



Phospho-PKC epsilon (Ser729) Antibody (44-977G) in WB

Peptide Competition and Phosphatase Treatment: Lysates prepared from K562 cells stimulated with PMA were resolved by SDS-PAGE on a 10% polyacrylamide gel and transferred to PVDF. Membranes were either left untreated (1-4) or treated with lambda.

View more figures on thermofisher.com

Western Blot (3)

Clinical cancer research : an official journal of the American Association for Cancer Research

Inhibition of melanoma growth by small molecules that promote the mitochondrial localization of ATF2.

"44-977G was used in western blot to discuss the consequences of cytoplasmic ATF2 in melanoma cells."

Authors: Varsano T,Lau E,Feng Y,Garrido M,Milan L,Heynen-Genel S,Hassig CA,Ronai ZA

Species
Human

Dilution
Not Cited

Year
2013

Cell

PKC promotes oncogenic functions of ATF2 in the nucleus while blocking its apoptotic function at mitochondria.

"44-977G was used in Western Blotting to identify that ATF2 tumor suppressor function is determined by its ability to localise at the mitochondria, where it alters membrane permeability following genotoxic stress."

Authors: Lau E,Kluger H,Varsano T,Lee K,Scheffler I,Rimm DL,Ideker T,Ronai ZA

Species
Human

Dilution
Not Cited

Year
2012

[View more WB references on thermofisher.com](#)

For Research Use Only. Not for use in diagnostic procedures. Not for resale without express authorization. Products are warranted to operate or perform substantially in conformance with published Product specifications in effect at the time of sale, as set forth in the Production documentation, specifications and/or accompanying package inserts ("Documentation"). No claim of suitability for use in applications regulated by FDA is made. The warranty provided herein is valid only when used by properly trained individuals. Unless otherwise stated in the Documentation, this warranty is limited to one year from date of shipment when the Product is subjected to normal, proper and intended usage. This warranty does not extend to anyone other than the Buyer. Any model or sample furnished to Buyer is merely illustrative of the general type and quality of goods and does not represent that any Product will conform to such model or sample. NO OTHER WARRANTIES, EXPRESS OR IMPLIED, ARE GRANTED INCLUDING WITHOUT LIMITATION, IMPLIED WARRANTIES OF MERCHANTABILITY, FITNESS FOR ANY PARTICULAR PURPOSE, OR NON INFRINGEMENT. BUYER'S EXCLUSIVE REMEDY FOR NON-CONFORMING PRODUCTS DURING THE WARRANTY PERIOD IS LIMITED TO REPAIR, REPLACEMENT OF OR REFUND FOR THE NON-CONFORMING PRODUCT(S) AT SELLER'S SOLE OPTION. THERE IS NO OBLIGATION TO REPAIR, REPLACE OR REFUND FOR PRODUCTS AS THE RESULT OF (I) ACCIDENT, DISASTER OR EVENT OF FORCE MAJEURE, (II) MISUSE, FAULT OR NEGLIGENCE OF OR BY BUYER, (III) USE OF THE PRODUCTS IN A MANNER FOR WHICH THEY WERE NOT DESIGNED, OR (IV) IMPROPER STORAGE AND HANDLING OF THE PRODUCTS. Unless otherwise expressly stated on the Product or in the documentation accompanying the Product, the Product is intended for research only and is not to be used for any other purpose, including without limitation, unauthorized commercial uses, in vitro diagnostic uses, ex vivo or in vivo therapeutic uses, or any type of consumption by or application to human or animals.