

# Cytochrome C Monoclonal Antibody (37BA11)

## Product Details

Size	100 µL
Species Reactivity	Bovine, C. elegans, Human, Mouse, Rat
Published Species	Rat, Yeast, Human, Mouse
Host/Isotype	Mouse / IgG2a, kappa
Class	Monoclonal
Type	Antibody
Clone	37BA11
Conjugate	Unconjugated
Immunogen	Bovine heart Cytochrome C
Form	Liquid
Concentration	1 mg/mL
Purification	IgG fraction
Storage buffer	HEPES buffered saline
Contains	0.02% sodium azide
Storage conditions	-20° C, Avoid Freeze/Thaw Cycles
RRID	AB_2533821

Applications	Tested Dilution	Publications
Western Blot (WB)	0.25-1 µg/mL	9 Publications
Immunohistochemistry (IHC)	-	2 Publications
Immunohistochemistry (Paraffin) (IHC (P))	-	2 Publications
Immunocytochemistry (ICC/IF)	0.5-2 µg/mL	1 Publication
Flow Cytometry (Flow)	1 µg/mL	-
Miscellaneous PubMed (Misc)	-	1 Publication

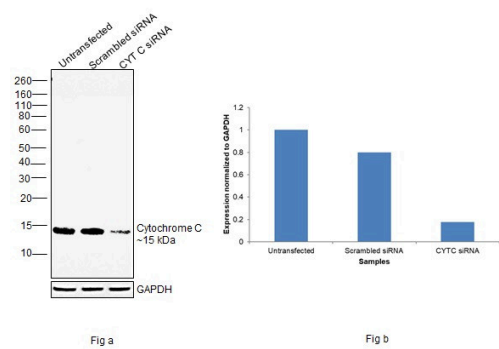
## Product Specific Information

45-6100 was used successfully in the western blot analysis of cytochrome C using human breast cancer cell line lysates.

Positive control: Isolated mitochondria from Human, Bovine, Rat and Mouse heart; Human fibroblasts; HeLa cells.

WB: Predicted molecular weight: 14 kDa. ICC/IF: Heat induced antigen retrieval in 0.1 M Tris-HCl, 5% urea, pH 9.5 for 5 min at 95°C improves signal.

Product Images For Cytochrome C Monoclonal Antibody (37BA11)

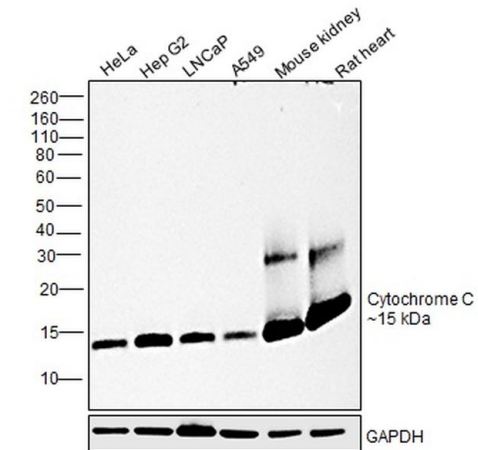


Cytochrome C Antibody (45-6100)

Antibody specificity was demonstrated by siRNA mediated knockdown of target protein. Hep G2 cells were transfected with Cytochrome C siRNA and decrease in signal intensity was observed in Western Blot application using Anti-Cytochrome C Monoclonal Antibody (37BA11) (Product # 45-6100). {KD}

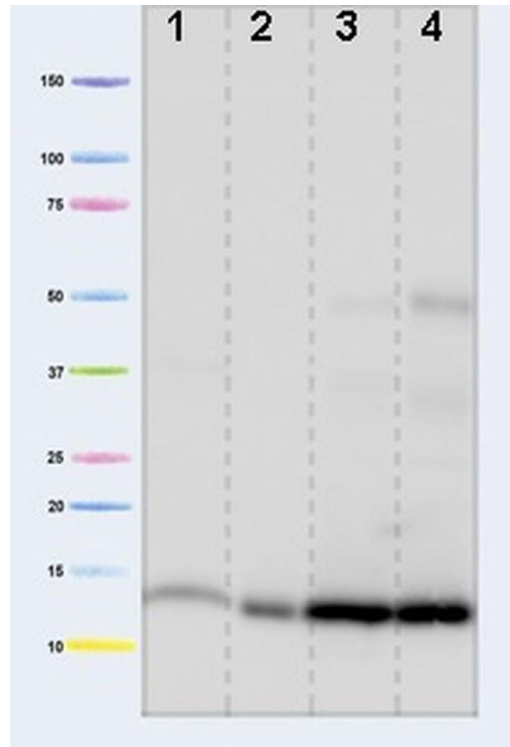
Cytochrome C Antibody (45-6100) in WB

Western blot was performed using Anti-Cytochrome C Monoclonal Antibody (37BA11) (Product # 45-6100) and a 15 kDa band corresponding to Cytochrome C was observed across cell lines and tissues. Membrane enriched extracts (30 µg lysate) of HeLa (Lane 1), Hep G2 (Lane 2), LNCaP (Lane 3), A549 (Lane 4) and tissue extracts of Mouse Kidney (Lane 5) and Rat Heart (Lane 6) were electrophoresed using NuPAGE™ 12% Bis-Tris Protein Gel (Product # NP0341BOX). Resolved proteins were then transferred onto a Nitrocellulose membrane (Product # IB23001) by iBlot® 2 Dry Blotting System (Product # IB21001). The blot was probed with the primary antibody (0.5 µg/mL) and detected by chemiluminescence with Goat anti-Mouse IgG (H+L) Superclonal™ Recombinant Secondary Antibody, HRP (Product # A28177, 1:4000 dilution) using the iBright FL 1000 (Product # A32752). Chemiluminescent detection was performed using Novex® ECL Chemiluminescent Substrate Reagent Kit (Product # WP20005).



Cytochrome C Antibody (45-6100) in WB

Western blot analysis of Cytochrome C in isolated mitochondria using a Cytochrome C Monoclonal antibody (Product # 45-6100) at 1 µg/mL. Lane 1: Isolated mitochondria from Human heart at 5 µg, Lane 2: Isolated mitochondria from Bovine heart at 1 µg, Lane 3: Isolated mitochondria from Rat heart at 10 µg, Lane 4: Isolated mitochondria from Mouse heart at 10 µg. Predicted band size: 12 kDa.



View more figures on [thermofisher.com](https://www.thermofisher.com)

Western Blot (9)

<p>Evidence-based complementary and alternative medicine : eCAM</p> <p><b>Mechanical Study of Jian-Gan-Xiao-Zhi Decoction on Nonalcoholic Fatty Liver Disease Based on Integrated Network Pharmacology and Untargeted Metabolomics.</b></p> <p>"45-6100 was used in Western Blotting to investigate the mechanisms by which Jian-Gan-Xiao-Zhi decoction improve nonalcoholic fatty liver disease."</p> <p>Authors: Cao YJ,Li HZ,Zhao J,Sun YM,Jin XW,Lv SQ,Luo JY,Fang XX,Wen WB,Liao JB</p>	<p>Year 2022</p> <p>Species Rat</p> <p>Dilution 1:2000</p>
<p>Molecules (Basel, Switzerland)</p> <p><b>16-Hydroxycyclroda-3,13-dien-15,16-olide Induces Apoptosis in Human Bladder Cancer Cells through Cell Cycle Arrest, Mitochondria ROS Overproduction, and Inactivation of EGFR-Related Signalling Pathways.</b></p> <p>"45-6100 was used in Western Blotting to investigate the mechanisms of 16-hydroxycyclroda-3,13-dien-15,16-olide-induced apoptosis in T24 human bladder cancer cells."</p> <p>Authors: Chen YC,Wang PY,Huang BM,Chen YJ,Lee WC,Chen YC</p>	<p>Year 2020</p> <p>Species Human</p> <p>Dilution 1:1000</p>

[View more WB references on thermofisher.com](#)

Immunohistochemistry (2)

<p>The EMBO journal</p> <p><b>Impaired disassembly of the axon initial segment restricts mitochondrial entry into damaged axons.</b></p> <p>"Published figure using Cytochrome C monoclonal antibody (Product # 45-6100) in Immunohistochemistry"</p> <p>Authors: Kiryu-Seo S,Matsushita R,Tashiro Y,Yoshimura T,Iguchi Y,Katsuno M,Takahashi R,Kiyama H</p>	<p>Year 2022</p>
<p>The Journal of comparative neurology</p> <p><b>Three-dimensional analysis of somatic mitochondrial dynamics in fission-deficient injured motor neurons using FIB/SEM.</b></p> <p>"45-6100 was used in Immunohistochemistry to examine three-dimensional morphologies of mitochondria in motor neurons under normal, nerve injured, and nerve injured plus fission-impaired conditions using the focused ion beam /scanning electron microscopy (FIB/SEM), because the FIB/SEM technology is a powerful tool to demonstrate both 3D images of whole organelle and the intra-organellar structure simultaneously."</p> <p>Authors: Tamada H,Kiryu-Seo S,Hosokawa H,Ohta K,Ishihara N,Nomura M,Mihara K,Nakamura KI,Kiyama H</p>	<p>Year 2017</p> <p>Species Mouse</p> <p>Dilution 1:1000</p>

More applications with references on thermofisher.com

- IHC (P) (2)
- ICC/IF (1)
- Misc (1)

For Research Use Only. Not for use in diagnostic procedures. Not for resale without express authorization. Products are warranted to operate or perform substantially in conformance with published Product specifications in effect at the time of sale, as set forth in the Production documentation, specifications and/or accompanying package inserts ("Documentation"). No claim of suitability for use in applications regulated by FDA is made. The warranty provided herein is valid only when used by properly trained individuals. Unless otherwise stated in the Documentation, this warranty is limited to one year from date of shipment when the Product is subjected to normal, proper and intended usage. This warranty does not extend to anyone other than the Buyer. Any model or sample furnished to Buyer is merely illustrative of the general type and quality of goods and does not represent that any Product will conform to such model or sample. NO OTHER WARRANTIES, EXPRESS OR IMPLIED, ARE GRANTED INCLUDING WITHOUT LIMITATION, IMPLIED WARRANTIES OF MERCHANTABILITY, FITNESS FOR ANY PARTICULAR PURPOSE, OR NON-INFRINGEMENT. BUYER'S EXCLUSIVE REMEDY FOR NON-CONFORMING PRODUCTS DURING THE WARRANTY PERIOD IS LIMITED TO REPAIR, REPLACEMENT OF OR REFUND FOR THE NON-CONFORMING PRODUCT(S) AT SELLER'S SOLE OPTION. THERE IS NO OBLIGATION TO REPAIR, REPLACE OR REFUND FOR PRODUCTS AS THE RESULT OF (I) ACCIDENT, DISASTER OR EVENT OF FORCE MAJEURE, (II) MISUSE, FAULT OR NEGLIGENCE OF OR BY BUYER, (III) USE OF THE PRODUCTS IN A MANNER FOR WHICH THEY WERE NOT DESIGNED, OR (IV) IMPROPER STORAGE AND HANDLING OF THE PRODUCTS. Unless otherwise expressly stated on the Product or in the documentation accompanying the Product, the Product is intended for research only and is not to be used for any other purpose, including without limitation, unauthorized commercial uses, in vitro diagnostic uses, ex vivo or in vivo therapeutic uses, or any type of consumption by or application to human or animals.