

# Ki-67 Monoclonal Antibody (20Raj1), PerCP-eFluor™ 710, eBioscience™

| Product Details             |  |
|-----------------------------|--|
| Size                        | 100 Tests  |
| Species Reactivity          | Dog, Human   |
| Published Species           | Human  |
| Host/Isotype                | Mouse / IgG1, kappa  |
| Recommended Isotype Control | Mouse IgG1 kappa Isotype Control (P3.6.2.8.1), PerCP-eFluor™ 710, eBioscience™ |
| Class                       | Monoclonal   |
| Type                        | Antibody   |
| Clone                       | 20Raj1   |
| Conjugate                   | PerCP-eFluor™ 710  |
| Excitation/Emission Max     | 482/708 nm   |
| Form                        | Liquid   |
| Concentration               | 5 µL/Test  |
| Purification                | Affinity chromatography  |
| Storage buffer              | PBS, pH 7.2, with 0.2% BSA   |
| Contains                    | 0.09% sodium azide   |
| Storage conditions          | 4° C, store in dark, DO NOT FREEZE!  |
| RRID                        | AB_10804653  |

| Applications          | Tested Dilution     | Publications    |
|-----------------------|---------------------|-----------------|
| Flow Cytometry (Flow) | 5 µL (0.03 µg)/test | 10 Publications |

## Product Specific Information

**Description:** The monoclonal antibody 20Raj1 recognizes the human Ki-67 protein. Two isoforms of Ki-67 exist, a 345 and 395 kDa form that are expressed in dividing cells. Ki-67 is expressed in all cell types and is detectable during active phases of the cell cycle (G1, S, G2, and mitosis) but is absent from resting cells (G0). During interphase, Ki-67 expression is localized to the nucleus but redistributes to the chromosomes during mitosis and has specifically been found to associate with heterochromatin-bound proteins such as chromobox protein homolog 3 (CBX3). In studies of tumor cells, Ki-67 expression has been used as a marker for determining the fraction of proliferating cells within a given population of tumor cells.

This monoclonal antibody 20Raj1 recognizes canine Ki-67.

**Applications Reported:** This 20Raj1 antibody has been reported for use in intracellular staining using the Foxp3 Staining Buffers followed by flow cytometric analysis.

**Applications Tested:** This 20Raj1 antibody has been pre-titrated and tested by intracellular staining using Foxp3/Transcription Factor Buffers Set (cat. 00-5523) and protocol of normal human peripheral blood cells. Please see Best Protocols Section (Staining intracellular Antigens for Flow Cytometry) for staining protocol (refer to Protocol B: One-step protocol for intracellular (nuclear) proteins. This can be used at 5 µL (0.03 µg) per test. A test is defined as the amount (µg) of antibody that will stain a cell sample in a final volume of 100 µL. Cell number should be determined empirically but can range from 10<sup>5</sup> to 10<sup>8</sup> cells /test.

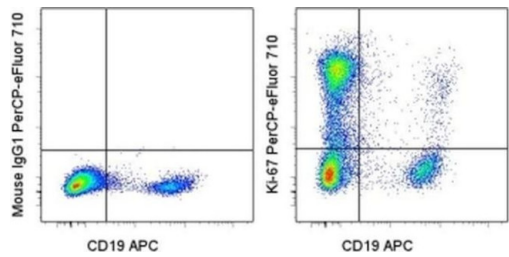
PerCP-eFluor® 710 emits at 710 nm and is excited with the blue laser (488 nm); it can be used in place of PerCP-Cyanine5.5. We recommend using a 710/50 bandpass filter, however, the 695/40 bandpass filter is an acceptable alternative. Please make sure that your instrument is capable of detecting this fluorochrome.

Fixation: Samples can be stored in IC Fixation Buffer (cat. 00-8222) (100 µL cell sample + 100 µL IC Fixation Buffer) or 1-step Fix/Lyse Solution (cat. 00-5333) for up to 3 days in the dark at 4°C with minimal impact on brightness and FRET efficiency /compensation. Some generalizations regarding fluorophore performance after fixation can be made, but clone specific performance should be determined empirically.

Excitation: 488 nm; Emission: 710 nm; Laser: Blue Laser.

Filtration: 0.2 µm post-manufacturing filtered.

Product Images For Ki-67 Monoclonal Antibody (20Raj1), PerCP-eFluor™ 710, eBioscience™



**Ki-67 Antibody (46-5699-42) in Flow**  
Intracellular staining of normal human peripheral blood cells stimulated for 2 days with immobilized Anti-Human CD3 (Product # 16-0037-81) with Anti-Human CD19 APC (Product # 17-0199-42) and Mouse IgG1 K Isotype Control PerCP-eFluor® 710 (Product # 46-4714-82) (left) or Anti-Human Ki-67 PerCP-eFluor® 710 (right). Staining was performed after fixation with the Foxp3/Transcription Factor Staining Buffers (Product # 00-5523-00) and protocol. Cells in the lymphocyte gate were used for analysis.

View more figures on thermofisher.com

10 References

Flow Cytometry (10)

|  |                                      |
|--|--------------------------------------|
| Cell reports. Medicine<br>Protein/AS01 <sub>B</sub> vaccination elicits stronger, more Th2-skewed antigen-specific human T follicular helper cell responses than heterologous viral vectors.<br>"Published figure using Ki-67 monoclonal antibody (Product # 46-5699-42) in Flow Cytometry"<br>Authors: Nielsen CM,Ogbe A,Pedroza-Pacheco I,Doeleman SE,Chen Y,Silk SE,Barrett JR,Elias SC,Miura K,Diouf A,Bardelli M,Dabbs RA,Barfod L,Long CA,Haynes BF,Payne RO,Minassian AM,Bradley T,Draper SJ,Borrow P | Year<br>2021<br><br>Species<br>Human |
| The Journal of clinical investigation<br>Single residue in CD28-costimulated CAR-T cells limits long-term persistence and antitumor durability.<br>"Published figure using Ki-67 monoclonal antibody (Product # 46-5699-42) in Flow Cytometry"<br>Authors: Guedan S,Madar A,Casado-Medrano V,Shaw C,Wing A,Liu F,Young RM,June CH,Posey AD   | Year<br>2020                         |

View more Flow references on thermofisher.com

More applications with references on thermofisher.com

For Research Use Only. Not for use in diagnostic procedures. Not for resale without express authorization. Products are warranted to operate or perform substantially in conformance with published Product specifications in effect at the time of sale, as set forth in the Production documentation, specifications and/or accompanying package inserts ("Documentation"). No claim of suitability for use in applications regulated by FDA is made. The warranty provided herein is valid only when used by properly trained individuals. Unless otherwise stated in the Documentation, this warranty is limited to one year from date of shipment when the Product is subjected to normal, proper and intended usage. This warranty does not extend to anyone other than the Buyer. Any model or sample furnished to Buyer is merely illustrative of the general type and quality of goods and does not represent that any Product will conform to such model or sample. NO OTHER WARRANTIES, EXPRESS OR IMPLIED, ARE GRANTED INCLUDING WITHOUT LIMITATION, IMPLIED WARRANTIES OF MERCHANTABILITY, FITNESS FOR ANY PARTICULAR PURPOSE, OR NON INFRINGEMENT. BUYER'S EXCLUSIVE REMEDY FOR NON-CONFORMING PRODUCTS DURING THE WARRANTY PERIOD IS LIMITED TO REPAIR, REPLACEMENT OF OR REFUND FOR THE NON-CONFORMING PRODUCT(S) AT SELLER'S SOLE OPTION. THERE IS NO OBLIGATION TO REPAIR, REPLACE OR REFUND FOR PRODUCTS AS THE RESULT OF (I) ACCIDENT, DISASTER OR EVENT OF FORCE MAJEURE, (II) MISUSE, FAULT OR NEGLIGENCE OF OR BY BUYER, (III) USE OF THE PRODUCTS IN A MANNER FOR WHICH THEY WERE NOT DESIGNED, OR (IV) IMPROPER STORAGE AND HANDLING OF THE PRODUCTS. Unless otherwise expressly stated on the Product or in the documentation accompanying the Product, the Product is intended for research only and is not to be used for any other purpose, including without limitation, unauthorized commercial uses, in vitro diagnostic uses, ex vivo or in vivo therapeutic uses, or any type of consumption by or application to human or animals.