

TCR V beta 6 Monoclonal Antibody (RR4-7), PerCP-eFluor™ 710, eBioscience™

Product Details	
Size	100 µg
Species Reactivity	Mouse
Published Species	Mouse
Host/Isotype	Rat / IgG2b, kappa
Recommended Isotype Control	Rat IgG2b kappa Isotype Control (eB149/10H5), PerCP-eFluor™ 710, eBioscience™
Class	Monoclonal
Type	Antibody
Clone	RR4-7
Conjugate	PerCP-eFluor™ 710
Excitation/Emission Max	482/708 nm
Form	Liquid
Concentration	0.2 mg/mL
Purification	Affinity chromatography
Storage buffer	PBS, pH 7.2
Contains	0.09% sodium azide
Storage conditions	4° C, store in dark, DO NOT FREEZE!
RRID	AB_11150054

Applications	Tested Dilution	Publications
Flow Cytometry (Flow)	0.125 µg/test	4 Publications

Product Specific Information

Description: This RR4-7 monoclonal antibody reacts with mouse V beta 6 TCR. Composed of an a and b chain, TCR specificity is typically determined by Va, Ja, Vb, Db, and Jb gene rearrangement. The RR4-7 antibody recognizes the V beta 6 chain on T cells from mouse strains with the a (e.g., C57BR and SJL) and b haplotypes (e.g., BALB/c, C3H, and DBA/1). Reports indicate that strains expressing the Mls-1a antigen, particularly in the presence of MHC Class II I-E, possess fewer V beta 6 TCR+ T cells.

The RR4-7 antibody has been reported to have functional activity in vitro and in vivo.

Applications Reported: This RR4-7 antibody has been reported for use in flow cytometric analysis.

Applications Tested: This RR4-7 antibody has been tested by flow cytometric analysis of mouse splenocytes. This can be used at less than or equal to 0.125 µg per test. A test is defined as the amount (µg) of antibody that will stain a cell sample in a final volume of 100 µL. Cell number should be determined empirically but can range from 10⁵ to 10⁸ cells/test. It is recommended that the antibody be carefully titrated for optimal performance in the assay of interest.

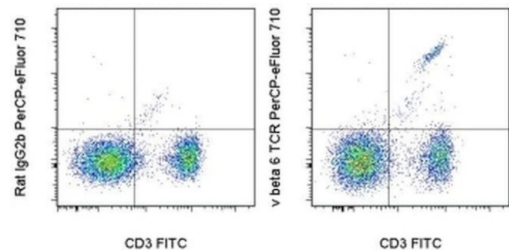
PerCP-eFluor® 710 can be used in place of PE-Cy5, PE-Cy5.5 or PerCP-Cy5.5. PerCP-eFluor® 710 emits at 710 nm and is excited with the blue laser (488 nm). Please make sure that your instrument is capable of detecting this fluorochrome. For a filter configuration, we recommend using the 685 LP dichroic mirror and 710/40 band pass filter, however the 695/40 band pass filter is an acceptable alternative.

Our testing indicates that PerCP-eFluor® 710 conjugated antibodies are stable when stained samples are exposed to freshly prepared 2% formaldehyde overnight at 4°C, but please evaluate for alternative fixation protocols.

Excitation: 488 nm; Emission: 710 nm; Laser: Blue Laser.

Filtration: 0.2 µm post-manufacturing filtered.

Product Images For TCR V beta 6 Monoclonal Antibody (RR4-7), PerCP-eFluor™ 710, eBioscience™



TCR V beta 6 Antibody (46-5795-82) in Flow
Staining of BALB/c splenocytes with Anti-Mouse CD3e FITC (Product # 11-0031-82) and 0.06 µg of Rat IgG2b K Isotype Control PerCP-eFluor® 710 (Product # 46-4031-82) (left) or 0.06 µg of Anti-Mouse V beta 6 TCR PerCP-eFluor® 710 (right). Cells in the lymphocyte gate were used for analysis.

4 References

Flow Cytometry (4)

<p>Nature immunology</p> <p>Regulatory T cells function in established systemic inflammation and reverse fatal autoimmunity.</p> <p>"46-5795-82 was used in flow cytometry to show that Treg cells are functional in settings of established broad-spectrum systemic inflammation and are capable of affording sustained reset of immune homeostasis."</p> <p>Authors: Hu W,Wang ZM,Feng Y,Schizas M,Hoyos BE,van der Veecken J,Verter JG,Bou-Puerto R,Rudensky AY</p>	<p>Year 2021</p> <p>Species Mouse</p>
<p>Immunity</p> <p>A distal Foxp3 enhancer enables interleukin-2 dependent thymic Treg cell lineage commitment for robust immune tolerance.</p> <p>"46-5795-82 was used in Flow cytometry/Cell sorting to investigate how STAT5 acts directly on the Foxp3 locus to promote its expression."</p> <p>Authors: Dikiy S,Li J,Bai L,Jiang M,Janke L,Zong X,Hao X,Hoyos B,Wang ZM,Xu B,Fan Y,Rudensky AY,Feng Y</p>	<p>Year 2021</p> <p>Species Mouse</p>

[View more Flow references on thermofisher.com](#)

For Research Use Only. Not for use in diagnostic procedures. Not for resale without express authorization. Products are warranted to operate or perform substantially in conformance with published Product specifications in effect at the time of sale, as set forth in the Production documentation, specifications and/or accompanying package inserts ("Documentation"). No claim of suitability for use in applications regulated by FDA is made. The warranty provided herein is valid only when used by properly trained individuals. Unless otherwise stated in the Documentation, this warranty is limited to one year from date of shipment when the Product is subjected to normal, proper and intended usage. This warranty does not extend to anyone other than the Buyer. Any model or sample furnished to Buyer is merely illustrative of the general type and quality of goods and does not represent that any Product will conform to such model or sample. NO OTHER WARRANTIES, EXPRESS OR IMPLIED, ARE GRANTED INCLUDING WITHOUT LIMITATION, IMPLIED WARRANTIES OF MERCHANTABILITY, FITNESS FOR ANY PARTICULAR PURPOSE, OR NON-INFRINGEMENT. BUYER'S EXCLUSIVE REMEDY FOR NON-CONFORMING PRODUCTS DURING THE WARRANTY PERIOD IS LIMITED TO REPAIR, REPLACEMENT OF OR REFUND FOR THE NON-CONFORMING PRODUCT(S) AT SELLER'S SOLE OPTION. THERE IS NO OBLIGATION TO REPAIR, REPLACE OR REFUND FOR PRODUCTS AS THE RESULT OF (I) ACCIDENT, DISASTER OR EVENT OF FORCE MAJEURE, (II) MISUSE, FAULT OR NEGLIGENCE OF OR BY BUYER, (III) USE OF THE PRODUCTS IN A MANNER FOR WHICH THEY WERE NOT DESIGNED, OR (IV) IMPROPER STORAGE AND HANDLING OF THE PRODUCTS. Unless otherwise expressly stated on the Product or in the documentation accompanying the Product, the Product is intended for research only and is not to be used for any other purpose, including without limitation, unauthorized commercial uses, in vitro diagnostic uses, ex vivo or in vivo therapeutic uses, or any type of consumption by or application to human or animals.