

ROR gamma (t) Monoclonal Antibody (B2D), PerCP-eFluor™ 710, eBioscience™

Product Details	
Size	100 µg
Species Reactivity	Mouse
Published Species	Mouse
Host/Isotype	Rat / IgG1, kappa
Recommended Isotype Control	Rat IgG1 kappa Isotype Control (eBRG1), PerCP-eFluor™ 710, eBioscience™
Class	Monoclonal
Type	Antibody
Clone	B2D
Conjugate	PerCP-eFluor™ 710
Excitation/Emission Max	482/708 nm
Form	Liquid
Concentration	0.2 mg/mL
Purification	Affinity chromatography
Storage buffer	PBS, pH 7.2
Contains	0.09% sodium azide
Storage conditions	4° C, store in dark, DO NOT FREEZE!
RRID	AB_10717956

Applications	Tested Dilution	Publications
Immunohistochemistry (Frozen) (IHC (F))	-	1 Publication
Flow Cytometry (Flow)	0.25 µg/test	13 Publications

Product Specific Information

Description: The B2D monoclonal antibody reacts with the mouse ROR gamma (t) protein. RORgamma is a member of the retinoic acid-related orphan receptor (ROR) family, which also includes ROR alpha and ROR beta. ROR family proteins are ligand-dependent transcription factors that play roles in multiple physiological processes. ROR gamma is expressed in several tissues including liver, lung, muscle, heart and kidney. Furthermore, it was discovered that alternative transcription results in the expression of an isoform, ROR gamma t, which is expressed exclusively in cells of the lymphoid compartment, namely CD4+CD8+ "double-positive" thymocytes, Th17 cells of the periphery and lymphoid tissue inducer (Lti) cells of lymphoid organs.

The ROR gamma t isoform differs from RORgamma by three unique amino acids at the amino terminus. Therefore, the B2D antibody will react with both the ROR gamma and ROR gamma t isoforms.

Applications Reported: This B2D antibody has been reported for use in intracellular staining followed by flow cytometric analysis.

Applications Tested: This B2D antibody has been tested by intracellular staining and flow cytometric analysis of mouse thymocytes. This can be used at less than or equal to 0.25 µg per test. A test is defined as the amount (µg) of antibody that will stain a cell sample in a final volume of 100 µL. Cell number should be determined empirically but can range from 10⁵ to 10⁸

cells/test. It is recommended that the antibody be carefully titrated for optimal performance in the assay of interest.

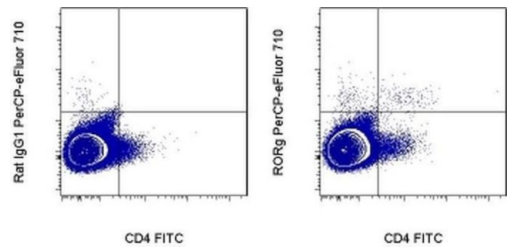
PerCP-eFluor® 710 can be used in place of PE-Cy5, PE-Cy5.5 or PerCP-Cy5.5. PerCP-eFluor® 710 emits at 710 nm and is excited with the blue laser (488 nm). Please make sure that your instrument is capable of detecting this fluorochrome. For a filter configuration, we recommend using the 685 LP dichroic mirror and 710/40 band pass filter, however the 695/40 band pass filter is an acceptable alternative.

Our testing indicates that PerCP-eFluor® 710 conjugated antibodies are stable when stained samples are exposed to freshly prepared 2% formaldehyde overnight at 4°C, but please evaluate for alternative fixation protocols.

Excitation: 488 nm; Emission: 710 nm; Laser: Blue Laser.

Filtration: 0.2 µm post-manufacturing filtered.

Product Images For ROR gamma (t) Monoclonal Antibody (B2D), PerCP-eFluor™ 710, eBioscience™



ROR gamma (t) Antibody (46-6981-82) in Flow
Staining of C57Bl/6 splenocytes with Anti-Mouse CD4 FITC (Product # 11-0041-82) and 0.125 µg of Rat IgG1 K Isotype Control PerCP-eFluor® 710 (Product # 46-4301-80) (left) or 0.125 µg of Anti-Mouse ROR gamma (t) PerCP-eFluor® 710 (right). Cells were also stained with Fixable Viability Dye eFluor® 780 (Product # 65-0865-14) and Anti-Mouse CD19 eFluor® 450 (Product # 48-0193-82) and Anti-Mouse CD3 APC (Product # 17-0031-82). Viable, CD3. CD19. cells were used for analysis.

[View more figures on thermofisher.com](#)

Immunohistochemistry (Frozen) (1)

<p>Nature immunology</p> <p>RORgammat and commensal microflora are required for the differentiation of mucosal interleukin 22-producing NKp46+ cells.</p> <p>"Published figure using ROR gamma (t) monoclonal antibody (Product # 46-6981-82) in Immunohistochemistry (Frozen)"</p> <p>Authors: Sanos SL,Bui VL,Mortha A,Oberle K,Heners C,Johner C,Diefenbach A</p>	<p>Year 2009</p> <p>Species</p>
---	-------------------------------------

Flow Cytometry (13)

<p>Journal of neuroinflammation</p> <p>CD4+ effector T cells accelerate Alzheimer's disease in mice.</p> <p>"46-6981-82 was used in Flow Cytometry to investigate the role of effector immunity and how it could affect cellular-level disease pathobiology in an alzheimer's disease animal model."</p> <p>Authors: Machhi J,Yeapuri P,Lu Y,Foster E,Chikhale R,Herskovitz J,Namminga KL,Olson KE,Abdelmoaty MM,Gao J,Quadros RM,Kiyota T,Jingjing L,Kevadiya BD,Wang X,Liu Y,Poluektova LY,Gurumurthy CB,Mosley RL,Gendelman HE</p>	<p>Year 2021</p> <p>Species Mouse</p>
--	---

<p>Immunity</p> <p>Multi-tissue single-cell analysis deconstructs the complex programs of mouse natural killer and type 1 innate lymphoid cells in tissues and circulation.</p> <p>"46-6981-82 was used in Flow cytometry/Cell sorting to identify gene expression programs of tissue-specific ILC1s, tissue-specific NK cells, and non-tissue-specific populations in blood, spleen, and other tissues largely corresponding to circulating cells."</p> <p>Authors: McFarland AP,Yalin A,Wang SY,Cortez VS,Landsberger T,Sudan R,Peng V,Miller HL,Ricci B,David E,Faccio R,Amit I,Colonna M</p>	<p>Year 2021</p> <p>Species Mouse</p>
---	---

[View more Flow references on thermofisher.com](#)

More applications with references on thermofisher.com

For Research Use Only. Not for use in diagnostic procedures. Not for resale without express authorization. Products are warranted to operate or perform substantially in conformance with published Product specifications in effect at the time of sale, as set forth in the Production documentation, specifications and/or accompanying package inserts ("Documentation"). No claim of suitability for use in applications regulated by FDA is made. The warranty provided herein is valid only when used by properly trained individuals. Unless otherwise stated in the Documentation, this warranty is limited to one year from date of shipment when the Product is subjected to normal, proper and intended usage. This warranty does not extend to anyone other than the Buyer. Any model or sample furnished to Buyer is merely illustrative of the general type and quality of goods and does not represent that any Product will conform to such model or sample. NO OTHER WARRANTIES, EXPRESS OR IMPLIED, ARE GRANTED INCLUDING WITHOUT LIMITATION, IMPLIED WARRANTIES OF MERCHANTABILITY, FITNESS FOR ANY PARTICULAR PURPOSE, OR NON INFRINGEMENT. BUYER'S EXCLUSIVE REMEDY FOR NON-CONFORMING PRODUCTS DURING THE WARRANTY PERIOD IS LIMITED TO REPAIR, REPLACEMENT OF OR REFUND FOR THE NON-CONFORMING PRODUCT(S) AT SELLER'S SOLE OPTION. THERE IS NO OBLIGATION TO REPAIR, REPLACE OR REFUND FOR PRODUCTS AS THE RESULT OF (i) ACCIDENT, DISASTER OR EVENT OF FORCE MAJEURE, (ii) MISUSE, FAULT OR NEGLIGENCE OF OR BY BUYER, (iii) USE OF THE PRODUCTS IN A MANNER FOR WHICH THEY WERE NOT DESIGNED, OR (iv) IMPROPER STORAGE AND HANDLING OF THE PRODUCTS. Unless otherwise expressly stated on the Product or in the documentation accompanying the Product, the Product is intended for research only and is not to be used for any other purpose, including without limitation, unauthorized commercial uses, in vitro diagnostic uses, ex vivo or in vivo therapeutic uses, or any type of consumption by or application to human or animals.