

IL-6 Monoclonal Antibody (MQ2-13A5), PerCP-eFluor 710, eBioscience™

Product Details	
Size	100 Tests
Species Reactivity	Human
Host/Isotope	Rat / IgG1, kappa
Recommended Isotype Control	Rat IgG1 kappa Isotype Control (eBRG1), PerCP-eFluor 710, eBioscience™
Class	Monoclonal
Type	Antibody
Clone	MQ2-13A5
Conjugate	PerCP-eFluor™ 710
Form	Liquid
Concentration	5 µL/Test
Purification	Affinity chromatography
Storage buffer	PBS, pH 7.2, with 0.1% gelatin, 0.2% BSA
Contains	0.09% sodium azide
Storage Conditions	4° C, store in dark, DO NOT FREEZE!
RRID	AB_11151511

Applications	Tested	Dilution	Published
Flow Cytometry (Flow)	✓	5 µL (0.125 µg)/test	2 Publications

Product Specific Information

Description: The MQ2-13A5 antibody reacts with human interleukin-6 (IL-6), a 21-28 kDa cytokine secreted by a variety of cell types.

Applications Reported: This MQ2-13A5 antibody has been reported for use in intracellular staining followed by flow cytometric analysis.

Applications Tested: This MQ2-13A5 antibody has been pre-titrated and tested by intracellular staining and flow cytometric analysis of stimulated normal human peripheral blood cells. This can be used at 5 µL (0.125 µg) per test. A test is defined as the amount (µg) of antibody that will stain a cell sample in a final volume of 100 µL. Cell number should be determined empirically but can range from 10⁵ to 10⁸ cells/test.

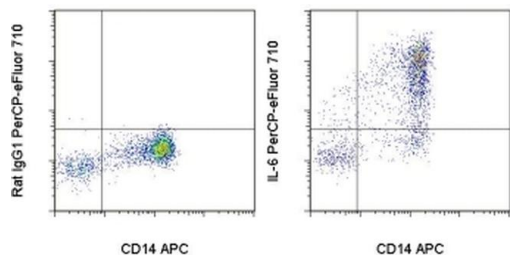
PerCP-eFluor® 710 can be used in place of PE-Cy5, PE-Cy5.5 or PerCP-Cy5.5. PerCP-eFluor® 710 emits at 710 nm and is excited with the blue laser (488 nm). Please make sure that your instrument is capable of detecting this fluorochrome. For a filter configuration, we recommend using the 685 LP dichroic mirror and 710/40 band pass filter, however the 695/40 band pass filter is an acceptable alternative.

Our testing indicates that PerCP-eFluor® 710 conjugated antibodies are stable when stained samples are exposed to freshly prepared 2% formaldehyde overnight at 4°C, but please evaluate for alternative fixation protocols.

Excitation: 488 nm; Emission: 710 nm; Laser: Blue Laser.

Filtration: 0.2 µm post-manufacturing filtered.

Product Images For IL-6 Monoclonal Antibody (MQ2-13A5), PerCP-eFluor 710, eBioscience™



IL-6 Antibody (46-7069-42) in Flow

Normal human peripheral blood cells stimulated for 5 hours with LPS in the presence of monensin were surface stained with Anti-Human CD14 FITC (Product # 11-0149-42). Cells were then fixed and permeabilized using the Fixation and Permeabilization Buffers (Product # 88-8823-88) and intracellularly stained with Rat IgG1 K Isotype Control PerCP-eFluor® 710 (Product # 46-4301-80) (left) or Anti-Human IL-6 PerCP-eFluor® 710 (right). Cells in the monocyte gate were used for analysis.

[View more figures on thermofisher.com](#)

2 References

Flow Cytometry (2)

Proceedings of the National Academy of Sciences of the United States of America

Biallelic hypomorphic mutations in a linear deubiquitinase define otulipenia, an early-onset autoinflammatory disease.

"Published figure using IL-6 monoclonal antibody (Product # 46-7069-42) in Flow Cytometry"

Authors: Zhou Q, Yu X, Demirkaya E, Deutch N, Stone D, Tsai WL, Kuehn HS, Wang H, Yang D, Park YH, Ombrello AK, Blake M, Romeo T, Remmers EF, Chae JJ, Mullikin JC, Güzel F, Milner JD, Boehm M, Rosenzweig SD, Gadina M, Welch SB, Özen S, Topaloglu R, Abinun M, Kastner DL, Aksentijevich I

Species
Not Applicable

Dilution
Not Cited

Year
2016

PloS one

TL1A induces TCR independent IL-6 and TNF- production and growth of PLZF leukocytes.

"Published figure using IL-6 monoclonal antibody (Product # 46-7069-42) in Flow Cytometry"

Authors: Reichwald K, Jørgensen TZ, Tougaard P, Skov S

Species
Not Applicable

Dilution
Not Cited

Year
2014

For Research Use Only. Not for use in diagnostic procedures. Not for resale without express authorization. Products are warranted to operate or perform substantially in conformance with published Product specifications in effect at the time of sale, as set forth in the Production documentation, specifications and/or accompanying package inserts ("Documentation"). No claim of suitability for use in applications regulated by FDA is made. The warranty provided herein is valid only when used by properly trained individuals. Unless otherwise stated in the Documentation, this warranty is limited to one year from date of shipment when the Product is subjected to normal, proper and intended usage. This warranty does not extend to anyone other than the Buyer. Any model or sample furnished to Buyer is merely illustrative of the general type and quality of goods and does not represent that any Product will conform to such model or sample. NO OTHER WARRANTIES, EXPRESS OR IMPLIED, ARE GRANTED INCLUDING WITHOUT LIMITATION, IMPLIED WARRANTIES OF MERCHANTABILITY, FITNESS FOR ANY PARTICULAR PURPOSE, OR NON-INFRINGEMENT. BUYER'S EXCLUSIVE REMEDY FOR NON-CONFORMING PRODUCTS DURING THE WARRANTY PERIOD IS LIMITED TO REPAIR, REPLACEMENT OF OR REFUND FOR THE NON-CONFORMING PRODUCT(S) AT SELLER'S SOLE OPTION. THERE IS NO OBLIGATION TO REPAIR, REPLACE OR REFUND FOR PRODUCTS AS THE RESULT OF (I) ACCIDENT, DISASTER OR EVENT OF FORCE MAJEURE, (II) MISUSE, FAULT OR NEGLIGENCE OF OR BY BUYER, (III) USE OF THE PRODUCTS IN A MANNER FOR WHICH THEY WERE NOT DESIGNED, OR (IV) IMPROPER STORAGE AND HANDLING OF THE PRODUCTS. Unless otherwise expressly stated on the Product or in the documentation accompanying the Product, the Product is intended for research only and is not to be used for any other purpose, including without limitation, unauthorized commercial uses, in vitro diagnostic uses, ex vivo or in vivo therapeutic uses, or any type of consumption by or application to human or animals.