

# CD326 (EpCAM) Monoclonal Antibody (1B7), PerCP-eFluor™ 710, eBioscience™

Product Details	
Size	100 Tests
Species Reactivity	Human
Published Species	Human
Host/Isotype	Mouse / IgG1, kappa
Recommended Isotype Control	Mouse IgG1 kappa Isotype Control (P3.6.2.8.1), PerCP-eFluor™ 710, eBioscience™
Class	Monoclonal
Type	Antibody
Clone	1B7
Conjugate	PerCP-eFluor™ 710
Excitation/Emission Max	482/708 nm
Form	Liquid
Concentration	5 µL/Test
Purification	Affinity chromatography
Storage buffer	PBS, pH 7.2, with 0.2% BSA
Contains	0.09% sodium azide
Storage conditions	4° C, store in dark, DO NOT FREEZE!
RRID	AB_1834413

Applications	Tested Dilution	Publications
Flow Cytometry (Flow)	5 µL (0.06 µg)/test	16 Publications

## Product Specific Information

**Description:** EpCAM (Epithelial cell adhesion molecule, CD326, KSA, TROP1) is a 40 kD cell-surface adhesion molecule participating in homophilic, calcium-independent cell-cell interactions. EpCAM is a type-I transmembrane protein, and is expressed primarily on the basolateral surface of most epithelia. Although normal epithelia express low levels of EpCAM, increased expression has been correlated with increased proliferation and progression to a mesenchymal phenotype. EpCAM has also been used as a diagnostic marker on circulating metastatic carcinoma cells, while cancer cells of non-epithelial origin do not express EpCAM.

**Applications Reported:** This 1B7 antibody has been reported for use in flow cytometric analysis.

**Applications Tested:** This 1B7 antibody has been pre-titrated and tested by flow cytometric analysis of A549 human lung carcinoma cells. This can be used at 5 µL (0.06 µg) per test. A test is defined as the amount (µg) of antibody that will stain a cell sample in a final volume of 100 µL. Cell number should be determined empirically but can range from 10<sup>5</sup> to 10<sup>8</sup> cells /test.

PerCP-eFluor® 710 emits at 710 nm and is excited with the blue laser (488 nm); it can be used in place of PerCP-Cyanine5.5. We recommend using a 710/50 bandpass filter, however, the 695/40 bandpass filter is an acceptable alternative. Please make sure that your instrument is capable of detecting this fluorochrome.

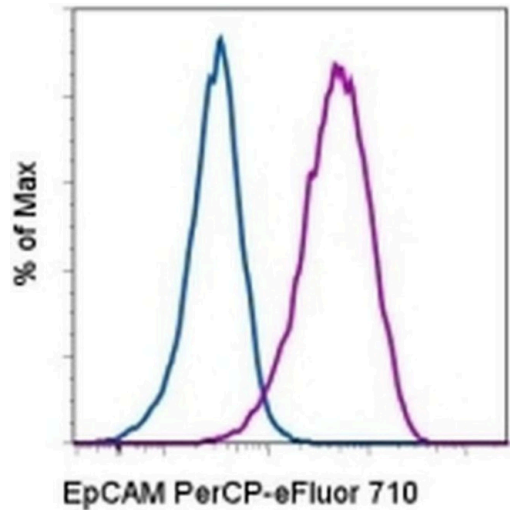
**Fixation:** Samples can be stored in IC Fixation Buffer (cat. 00-8222) (100 µL of cell sample + 100 µL of IC Fixation Buffer) or 1-

step Fix/Lyse Solution (cat. 00-5333) for up to 3 days in the dark at 4°C with minimal impact on brightness and FRET efficiency /compensation. Some generalizations regarding fluorophore performance after fixation can be made, but clone specific performance should be determined empirically.

Excitation: 488 nm; Emission: 710 nm; Laser: Blue Laser.

Filtration: 0.2 µm post-manufacturing filtered.

Product Images For CD326 (EpCAM) Monoclonal Antibody (1B7), PerCP-eFluor™ 710, eBioscience™



**CD326 (EpCAM) Antibody (46-9326-42) in Flow**  
Staining of the A549 human lung carcinoma cell line with Mouse IgG1 K Isotype Control PerCP-eFluor® 710 (Product # 46-4714-82) (blue histogram) or Anti-Human CD326 (EpCAM) PerCP-eFluor® 710 (purple histogram). Total viable cells were used for analysis.

View more figures on thermofisher.com

16 References

Flow Cytometry (16)

International journal of cancer	Year
<b>Dynamics of CXCR4 positive circulating tumor cells in prostate cancer patients during radiotherapy.</b>	2023
"Published figure using CD326 (EpCAM) monoclonal antibody (Product # 46-9326-42) in Flow Cytometry"	
Authors: Klusa D,Lohaus F,Franken A,Baumbach M,Cojoc M,Dowling P,Linge A,Offermann A,Löck S,Hušman D, Rivandi M,Polzer B,Freytag V,Lange T,Neubauer H,Kücken M,Perner S,Hölscher T,Dubrovskaja A,Krause M,Kurth I, Baumann M,Peitzsch C	

Scientific reports	Year
<b>Tumor suppressor DEAR1 regulates mammary epithelial cell fate and predicts early onset and metastasis in triple negative breast cancer.</b>	2022
"Published figure using CD326 (EpCAM) monoclonal antibody (Product # 46-9326-42) in Flow Cytometry"	
Authors: Le UQ,Chen N,Balasenthil S,Lurie E,Yang F,Liu S,Rubin L,Solis Soto LM,Raso MG,Batra H,Sahin AA,Wistuba II,Killary AM	

View more Flow references on thermofisher.com

More applications with references on thermofisher.com

For Research Use Only. Not for use in diagnostic procedures. Not for resale without express authorization. Products are warranted to operate or perform substantially in conformance with published Product specifications in effect at the time of sale, as set forth in the Production documentation, specifications and/or accompanying package inserts ("Documentation"). No claim of suitability for use in applications regulated by FDA is made. The warranty provided herein is valid only when used by properly trained individuals. Unless otherwise stated in the Documentation, this warranty is limited to one year from date of shipment when the Product is subjected to normal, proper and intended usage. This warranty does not extend to anyone other than the Buyer. Any model or sample furnished to Buyer is merely illustrative of the general type and quality of goods and does not represent that any Product will conform to such model or sample. NO OTHER WARRANTIES, EXPRESS OR IMPLIED, ARE GRANTED INCLUDING WITHOUT LIMITATION, IMPLIED WARRANTIES OF MERCHANTABILITY, FITNESS FOR ANY PARTICULAR PURPOSE, OR NON INFRINGEMENT. BUYER'S EXCLUSIVE REMEDY FOR NON-CONFORMING PRODUCTS DURING THE WARRANTY PERIOD IS LIMITED TO REPAIR, REPLACEMENT OF OR REFUND FOR THE NON-CONFORMING PRODUCT(S) AT SELLER'S SOLE OPTION. THERE IS NO OBLIGATION TO REPAIR, REPLACE OR REFUND FOR PRODUCTS AS THE RESULT OF (I) ACCIDENT, DISASTER OR EVENT OF FORCE MAJEURE, (II) MISUSE, FAULT OR NEGLIGENCE OF OR BY BUYER, (III) USE OF THE PRODUCTS IN A MANNER FOR WHICH THEY WERE NOT DESIGNED, OR (IV) IMPROPER STORAGE AND HANDLING OF THE PRODUCTS. Unless otherwise expressly stated on the Product or in the documentation accompanying the Product, the Product is intended for research only and is not to be used for any other purpose, including without limitation, unauthorized commercial uses, in vitro diagnostic uses, ex vivo or in vivo therapeutic uses, or any type of consumption by or application to human or animals.