

# TCR gamma/delta Monoclonal Antibody (B1.1), PerCP-eFluor 710, eBioscience™

Product Details	
Size	100 Tests
Species	Human
Expression System	Mouse / IgG1, kappa
Recommended Isotype Control	Mouse IgG1 kappa Isotype Control (P3.6.2.8.1), PerCP-eFluor 710, eBioscience™
Class	Monoclonal
Type	Antibody
Clone	B1.1
Conjugate	PerCP-eFluor™ 710
Form	Liquid
Concentration	5 µL/Test
Purification	Affinity chromatography
Storage buffer	PBS, pH 7.2, with 0.1% gelatin, 0.2% BSA
Contains	0.09% sodium azide
Storage Conditions	4° C, store in dark, DO NOT FREEZE!
RRID	AB_2573926

Applications	Tested Dilution	Publications
Flow Cytometry (Flow)	5 µL (2 µg)/test	-
Functional Assay (FN)	-	1 Publication

## Product Specific Information

Description: The B1.1 monoclonal antibody reacts with the human gamma delta TCR complex. The gamma delta TCR is expressed by a small subset of T cells in the thymus, peripheral lymphoid tissues, intestinal epithelium, and epidermis. The exact specificity, ligand and function of gamma delta TCR-bearing T cells are not yet fully understood; it is suggested that these cells recognize bacterial ligands and some tumor cells in the context of MHC class I-like gene products and play a role in regulation of the immune response and during bacterial infection. This monoclonal can be used as a phenotypic marker for gamma delta TCR-expressing T cells.

Applications Reported: This B1.1 antibody has been reported for use in flow cytometric analysis.

Applications Tested: This B1.1 antibody has been pre-titrated and tested by flow cytometric analysis of normal human peripheral blood cells. This can be used at 5 µL (2.0 µg) per test. A test is defined as the amount (µg) of antibody that will stain a cell sample in a final volume of 100 µL. Cell number should be determined empirically but can range from 10<sup>5</sup> to 10<sup>8</sup> cells/test.

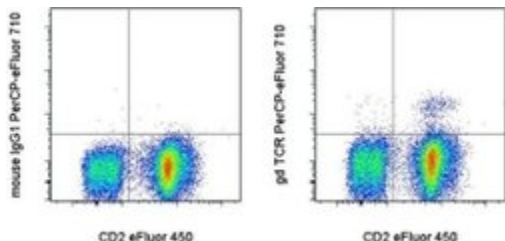
PerCP-eFluor® 710 emits at 710 nm and is excited with the blue laser (488 nm); it can be used in place of PerCP-Cyanine5.5. We recommend using a 710/50 bandpass filter, however, the 695/40 bandpass filter is an acceptable alternative. Please make sure that your instrument is capable of detecting this fluorochrome.

Fixation: Samples can be stored in IC Fixation Buffer (cat. 00-8222) (100  $\mu$ L cell sample + 100  $\mu$ L IC Fixation Buffer) or 1-step Fix /Lyse Solution (cat. 00-5333) for up to 3 days in the dark at 4°C with minimal impact on brightness and FRET efficiency /compensation. Some generalizations regarding fluorophore performance after fixation can be made, but clone specific performance should be determined empirically.

Excitation: 488 nm; Emission: 710 nm; Laser: Blue Laser.

Filtration: 0.2  $\mu$ m post-manufacturing filtered.

## Product Images For TCR gamma/delta Monoclonal Antibody (B1.1), PerCP-eFluor 710, eBioscience™



### TCR gamma/delta Antibody (46-9959-42) in Flow

Staining of normal human peripheral blood cells with Anti-Human/Non-Human Primate CD2 eFluor® 450 (Product # 8048-0029) and Mouse IgG1 K Isotype Control PerCP-eFluor® 710 (Product # 46-4714-82) (left) or Anti-Human gamma delta TCR PerCP-eFluor® 710 (right). Cells in the lymphocyte gate were used for analysis.

## 1 Reference

### Functional Assay (1)

Infection and immunity

#### Gamma interferon secretion by human Vgamma2Vdelta2 T cells after stimulation with antibody against the T-cell receptor plus the Toll-Like receptor 2 agonist Pam3Cys.

Authors: Deetz CO, Hebbeler AM, Propp NA, Cairo C, Tikhonov I, Pauza CD

**Species**  
Not Applicable

**Dilution**  
Not Cited

**Year**  
2006

For Research Use Only. Not for use in diagnostic procedures. Not for resale without express authorization. Products are warranted to operate or perform substantially in conformance with published Product specifications in effect at the time of sale, as set forth in the Production documentation, specifications and/or accompanying package inserts ("Documentation"). No claim of suitability for use in applications regulated by FDA is made. The warranty provided herein is valid only when used by properly trained individuals. Unless otherwise stated in the Documentation, this warranty is limited to one year from date of shipment when the Product is subjected to normal, proper and intended usage. This warranty does not extend to anyone other than the Buyer. Any model or sample furnished to Buyer is merely illustrative of the general type and quality of goods and does not represent that any Product will conform to such model or sample. NO OTHER WARRANTIES, EXPRESS OR IMPLIED, ARE GRANTED INCLUDING WITHOUT LIMITATION, IMPLIED WARRANTIES OF MERCHANTABILITY, FITNESS FOR ANY PARTICULAR PURPOSE, OR NON INFRINGEMENT. BUYER'S EXCLUSIVE REMEDY FOR NON-CONFORMING PRODUCTS DURING THE WARRANTY PERIOD IS LIMITED TO REPAIR, REPLACEMENT OF OR REFUND FOR THE NON-CONFORMING PRODUCT(S) AT SELLER'S SOLE OPTION. THERE IS NO OBLIGATION TO REPAIR, REPLACE OR REFUND FOR PRODUCTS AS THE RESULT OF (I) ACCIDENT, DISASTER OR EVENT OF FORCE MAJEURE, (II) MISUSE, FAULT OR NEGLIGENCE OF OR BY BUYER, (III) USE OF THE PRODUCTS IN A MANNER FOR WHICH THEY WERE NOT DESIGNED, OR (IV) IMPROPER STORAGE AND HANDLING OF THE PRODUCTS. Unless otherwise expressly stated on the Product or in the documentation accompanying the Product, the Product is intended for research only and is not to be used for any other purpose, including without limitation, unauthorized commercial uses, in vitro diagnostic uses, ex vivo or in vivo therapeutic uses, or any type of consumption by or application to human or animals.