

CD25 Monoclonal Antibody (PC61.5), APC-eFluor™ 780, eBioscience™

Product Details	
Size	100 µg
Species Reactivity	Mouse
Published Species	Mouse
Host/Isotype	Rat / IgG1, lambda
Recommended Isotype Control	Rat IgG1 kappa Isotype Control (eBRG1), APC-eFluor™ 780, eBioscience™
Class	Monoclonal
Type	Antibody
Clone	PC61.5
Conjugate	APC-eFluor™ 780
Excitation/Emission Max	756/785 nm
Form	Liquid
Concentration	0.2 mg/mL
Purification	Affinity chromatography
Storage buffer	PBS, pH 7.2
Contains	0.09% sodium azide
Storage conditions	4° C, store in dark, DO NOT FREEZE!
RRID	AB_1272179

Applications	Tested Dilution	Publications
Flow Cytometry (Flow)	0.5 µg/test	96 Publications
Functional Assay (FN)	-	2 Publications

Product Specific Information

Description: The PC61.5 antibody reacts with mouse CD25, the 55 kDa interleukin-2 receptor alpha chain (IL-2R alpha). CD25 is expressed by early progenitors of the T and B lineage as well as by activated mature T and B lymphocytes. By itself, CD25 binds IL-2 only with low affinity. However, CD25 associates with CD122 (IL-2 receptor beta chain) and CD132 (common gamma chain) to form the high affinity IL-2 receptor. Binding of IL-2 to both the high and low affinity classes of IL-2 receptor is inhibited by the PC61.5 antibody. CD25 plays a role in lymphocyte differentiation and activation/proliferation.

Applications Reported: This PC61.5 antibody has been reported for use in flow cytometric analysis.

Applications Tested: This PC61.5 antibody has been tested by flow cytometric analysis of mouse splenocytes. This can be used at less than or equal to 0.5 µg per test. A test is defined as the amount (µg) of antibody that will stain a cell sample in a final volume of 100 µL. Cell number should be determined empirically but can range from 10⁵ to 10⁸ cells/test. It is recommended that the antibody be carefully titrated for optimal performance in the assay of interest.

APC-eFluor 780 emits at 780 nm and is excited with the Red laser (633 nm). Please make sure that your instrument is capable of detecting this fluorochrome.

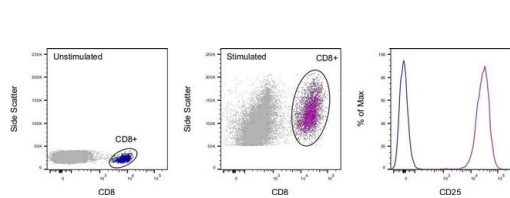
Light sensitivity: This tandem is sensitive to photo-induced oxidation. Please protect this vial and stained samples from light.

Fixation: Samples can be stored in IC Fixation Buffer (cat. 00-8222) (100 µL cell sample + 100 µL IC Fixation Buffer) or 1-step Fix/Lyse Solution (cat. 00-5333) for up to 3 days in the dark at 4°C with minimal impact on brightness and FRET efficiency /compensation. Some generalizations regarding fluorophore performance after fixation can be made, but clone specific performance should be determined empirically.

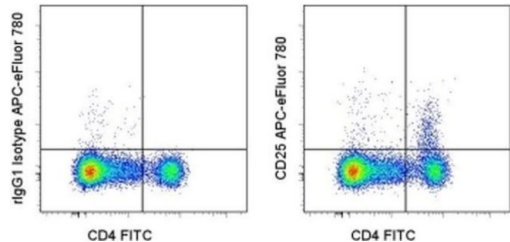
Excitation: 633-647 nm; Emission: 780 nm; Laser: Red Laser.

Filtration: 0.2 µm post-manufacturing filtered.

Product Images For CD25 Monoclonal Antibody (PC61.5), APC-eFluor™ 780, eBioscience™



CD25 Antibody (47-0251-82)
Staining of stimulated mouse splenocytes. As expected based on known expression patterns, CD25 clone PC61.5 staining is significantly increased in CD8+ T cells after stimulation. Details: Mouse splenocytes were unstimulated (blue histogram) or stimulated for 2 days with CD3 (clone 145-2C11), CD28 (clone 37.51), and Mouse IL-2 Recombinant Protein (purple histogram). After stimulation, cells were stained with CD8 (clone 53-6.7) and CD25 (clone PC61.5). Cells in the CD8+ gate were used for analysis. {TM}



CD25 Antibody (47-0251-82) in Flow
Staining of BALB/c splenocytes with Anti-Mouse CD4 FITC (Product # 11-0041-82) and 0.25 µg of Rat IgG1 K Isotype Control APC-eFluor® 780 (Product # 47-4301-80) (left) or 0.25 µg of Anti-Mouse CD25 APC-eFluor® 780 (right). Total viable cells were used for analysis.

[View more figures on thermofisher.com](#)

Flow Cytometry (96)

<p>Nature communications</p> <p>Aiolos represses CD4⁺ T cell cytotoxic programming via reciprocal regulation of T_{FH} transcription factors and IL-2 sensitivity.</p> <p>"Published figure using CD25 monoclonal antibody (Product # 47-0251-82) in Flow Cytometry"</p> <p>Authors: Read KA,Jones DM,Pokhrel S,Hales EDS,Varkey A,Tuazon JA,Eisele CD,Abdouni O,Saadey A,Leonard MR,Warren RT,Powell MD,Boss JM,Hemann EA,Yount JS,Xin G,Ghoneim HE,Lio CJ,Freud AG,Collins PL,Oestreich KJ</p>	<p>Year 2023</p>
<p>Nature communications</p> <p>Immunotherapy targeting plasma ASM is protective in a mouse model of Alzheimer's disease.</p> <p>"Published figure using CD25 monoclonal antibody (Product # 47-0251-82) in Flow Cytometry"</p> <p>Authors: Choi BJ,Park MH,Park KH,Han WH,Yoon HJ,Jung HY,Hong JY,Chowdhury MR,Kim KY,Lee J,Song IS,Pang M,Choi MK,Gulbins E,Reichel M,Kornhuber J,Hong CW,Kim C,Kim SH,Schuchman EH,Jin HK,Bae JS</p>	<p>Year 2023</p>

[View more Flow references on thermofisher.com](#)

Functional Assay (2)

<p>Cancer research</p> <p>Combination of tumor site-located CTL-associated antigen-4 blockade and systemic regulatory T-cell depletion induces tumor-destructive immune responses.</p> <p>Authors: Tuve S,Chen BM,Liu Y,Cheng TL,Touré P,Sow PS,Feng Q,Kiviat N,Strauss R,Ni S,Li ZY,Roffler SR,Lieber A</p>	<p>Year 2007</p>
<p>Cancer research</p> <p>Listeria monocytogenes promotes tumor growth via tumor cell toll-like receptor 2 signaling.</p> <p>Authors: Huang B,Zhao J,Shen S,Li H,He KL,Shen GX,Mayer L,Unkeless J,Li D,Yuan Y,Zhang GM,Xiong H,Feng ZH</p>	<p>Year 2007</p>

More applications with references on thermofisher.com

For Research Use Only. Not for use in diagnostic procedures. Not for resale without express authorization. Products are warranted to operate or perform substantially in conformance with published Product specifications in effect at the time of sale, as set forth in the Production documentation, specifications and/or accompanying package inserts ("Documentation"). No claim of suitability for use in applications regulated by FDA is made. The warranty provided herein is valid only when used by properly trained individuals. Unless otherwise stated in the Documentation, this warranty is limited to one year from date of shipment when the Product is subjected to normal, proper and intended usage. This warranty does not extend to anyone other than the Buyer. Any model or sample furnished to Buyer is merely illustrative of the general type and quality of goods and does not represent that any Product will conform to such model or sample. NO OTHER WARRANTIES, EXPRESS OR IMPLIED, ARE GRANTED INCLUDING WITHOUT LIMITATION, IMPLIED WARRANTIES OF MERCHANTABILITY, FITNESS FOR ANY PARTICULAR PURPOSE, OR NON INFRINGEMENT. BUYER'S EXCLUSIVE REMEDY FOR NON-CONFORMING PRODUCTS DURING THE WARRANTY PERIOD IS LIMITED TO REPAIR, REPLACEMENT OF OR REFUND FOR THE NON-CONFORMING PRODUCT(S) AT SELLER'S SOLE OPTION. THERE IS NO OBLIGATION TO REPAIR, REPLACE OR REFUND FOR PRODUCTS AS THE RESULT OF (i) ACCIDENT, DISASTER OR EVENT OF FORCE MAJEURE, (ii) MISUSE, FAULT OR NEGLIGENCE OF OR BY BUYER, (iii) USE OF THE PRODUCTS IN A MANNER FOR WHICH THEY WERE NOT DESIGNED, OR (iv) IMPROPER STORAGE AND HANDLING OF THE PRODUCTS. Unless otherwise expressly stated on the Product or in the documentation accompanying the Product, the Product is intended for research only and is not to be used for any other purpose, including without limitation, unauthorized commercial uses, in vitro diagnostic uses, ex vivo or in vivo therapeutic uses, or any type of consumption by or application to human or animals.