

CD2 Monoclonal Antibody (RPA-2.10), eFluor™ 450, eBioscience™

Product Details	
Size	100 Tests
Species Reactivity	Baboon, Chimpanzee, Cynomolgus monkey, Human, Non-human primate, Pig, Rhesus monkey
Published Species	Human
Host/Isotype	Mouse / IgG1, kappa
Recommended Isotype Control	Mouse IgG1 kappa Isotype Control (P3.6.2.8.1), eFluor™ 450, eBioscience™
Class	Monoclonal
Type	Antibody
Clone	RPA-2.10
Conjugate	eFluor™ 450
Form	Liquid
Concentration	5 µL/Test
Purification	Affinity chromatography
Storage buffer	PBS, pH 7.2, with 0.1% gelatin, 0.2% BSA
Contains	0.09% sodium azide
Storage conditions	4° C, store in dark, DO NOT FREEZE!
RRID	AB_2574006

Applications	Tested Dilution	Publications
Immunohistochemistry (Frozen) (IHC (F))	-	1 Publication
Flow Cytometry (Flow)	5 µL (0.06 µg)/test	5 Publications

Product Specific Information

Description: The RPA-2.10 monoclonal antibody reacts with human CD2, a 50 kDa cell surface receptor expressed by a majority of thymocytes, all mature T cells and subset of NK cells. CD2 is a ligand for CD58 in the human and is involved in adhesion and activation of T cells. RPA-2.10 blocks mixed lymphocyte reaction.

RPA-2.10 crossreacts to non-human primates and pigs.

Applications Reported: This RPA-2.10 antibody has been reported for use in flow cytometric analysis.

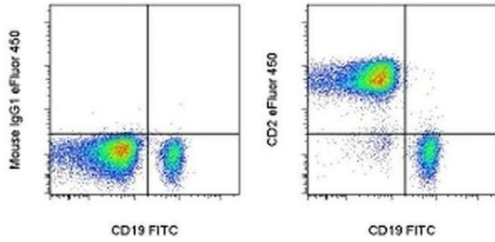
Applications Tested: This RPA-2.10 antibody has been pre-titrated and tested by flow cytometric analysis of normal human peripheral blood cells. This can be used at 5 µL (0.06 µg) per test. A test is defined as the amount (µg) of antibody that will stain a cell sample in a final volume of 100 µL. Cell number should be determined empirically but can range from 10⁵ to 10⁸ cells/test.

eFluor® 450 is an alternative to Pacific Blue®. eFluor® 450 emits at 445 nm and is excited with the Violet laser (405 nm). Please make sure that your instrument is capable of detecting this fluorochrome.

Excitation: 405 nm; **Emission:** 445 nm; **Laser:** Violet Laser.

Filtration: 0.2 µm post-manufacturing filtered.

Product Images For CD2 Monoclonal Antibody (RPA-2.10), eFluor™ 450, eBioscience™



CD2 Antibody (48-0029-42) in Flow

Staining of normal human peripheral blood cells with Anti-Human CD19 FITC (Product # 11-0199-42) and Mouse IgG1 K Isotype Control eFluor® 450 (Product # 48-4714-82) (left) or Anti-Human/Non-Human Primate CD2 eFluor® 450 (right). Cells in the lymphocyte gate were used for analysis.

6 References

Immunohistochemistry (Frozen) (1)

The journal of histochemistry and cytochemistry : official journal of the Histochemistry Society

A monoclonal antibody selection for immunohistochemical examination of lymphoid tissues from non-human primates.

Authors: Kap YS, van Meurs M, van Driel N, Koopman G, Melief MJ, Brok HP, Laman JD, 't Hart BA

Species
Not Applicable

Dilution
Not Cited

Year
2009

Flow Cytometry (5)

Biophysical journal

Constraints on GPCR Heterodimerization Revealed by the Type-4 Induced-Association BRET Assay.

"Published figure using CD2 monoclonal antibody (Product # 48-0029-42) in Flow Cytometry"

Authors: Felce JH, MacRae A, Davis SJ

Species
Not Applicable

Dilution
Not Cited

Year
2019

European journal of immunology

Tissue factor expression by myeloid cells contributes to protective immune response against Mycobacterium tuberculosis infection.

"48-0029 was used in Flow cytometry/Cell sorting to determine the role of tissue factor expressed by myeloid cells during Mycobacterium tuberculosis infection."

Authors: Venkatasubramanian S, Tripathi D, Tucker T, Paidipally P, Cheekatla S, Welch E, Raghunath A, Jeffers A, Tvinnereim AR, Schechter ME, Andrade BB, Mackman N, Idell S, Vankayalapati R

Species
Human

Dilution
Not Cited

Year
2016

[View more Flow references on thermofisher.com](#)

More applications with references on thermofisher.com

For Research Use Only. Not for use in diagnostic procedures. Not for resale without express authorization. Products are warranted to operate or perform substantially in conformance with published Product specifications in effect at the time of sale, as set forth in the Production documentation, specifications and/or accompanying package inserts ("Documentation"). No claim of suitability for use in applications regulated by FDA is made. The warranty provided herein is valid only when used by properly trained individuals. Unless otherwise stated in the Documentation, this warranty is limited to one year from date of shipment when the Product is subjected to normal, proper and intended usage. This warranty does not extend to anyone other than the Buyer. Any model or sample furnished to Buyer is merely illustrative of the general type and quality of goods and does not represent that any Product will conform to such model or sample. NO OTHER WARRANTIES, EXPRESS OR IMPLIED, ARE GRANTED INCLUDING WITHOUT LIMITATION, IMPLIED WARRANTIES OF MERCHANTABILITY, FITNESS FOR ANY PARTICULAR PURPOSE, OR NON-INFRINGEMENT. BUYER'S EXCLUSIVE REMEDY FOR NON-CONFORMING PRODUCTS DURING THE WARRANTY PERIOD IS LIMITED TO REPAIR, REPLACEMENT OF OR REFUND FOR THE NON-CONFORMING PRODUCT(S) AT SELLER'S SOLE OPTION. THERE IS NO OBLIGATION TO REPAIR, REPLACE OR REFUND FOR PRODUCTS AS THE RESULT OF (I) ACCIDENT, DISASTER OR EVENT OF FORCE MAJEURE, (II) MISUSE, FAULT OR NEGLIGENCE OF OR BY BUYER, (III) USE OF THE PRODUCTS IN A MANNER FOR WHICH THEY WERE NOT DESIGNED, OR (IV) IMPROPER STORAGE AND HANDLING OF THE PRODUCTS. Unless otherwise expressly stated on the Product or in the documentation accompanying the Product, the Product is intended for research only and is not to be used for any other purpose, including without limitation, unauthorized commercial uses, in vitro diagnostic uses, ex vivo or in vivo therapeutic uses, or any type of consumption by or application to human or animals.