

CD20 Monoclonal Antibody (2H7), eFluor 450, eBioscience

Product Details	
Size	100 Tests
Species Reactivity	Human
Published Species	Cynomolgus Monkey, Non-human primate, Human, Rhesus monkey
Host/Isotype	Mouse / IgG2b, kappa
Recommended Isotype Control	Mouse IgG2b kappa Isotype Control (eBMG2b), eFluor 450, eBioscience
Class	Monoclonal
Type	Antibody
Clone	2H7
Conjugate	eFluor® 450
Form	Liquid
Concentration	5 µL/Test
Purification	Affinity chromatography
Storage buffer	PBS, pH 7.2, with 0.1% gelatin, 0.2% BSA
Contains	0.09% sodium azide
Storage Conditions	4° C, store in dark, DO NOT FREEZE!
RRID	AB_1633384

Applications	Tested Dilution	Publications
Immunohistochemistry (IHC)	-	2 Publications
Flow Cytometry (Flow)	5 µL (0.5 µg)/test	11 Publications

Product Specific Information

Description: The 2H7 monoclonal antibody reacts with human CD20, a 33-36 kDa transmembrane protein. CD20 is expressed by developing B cells as well as mature B cells but not plasma cells. CD20 has been detected at low levels on a small subset of mature T cells. It is suggested that CD20 plays a role in B-cell activation.

Applications Reported: This 2H7 antibody has been reported for use in flow cytometric analysis.

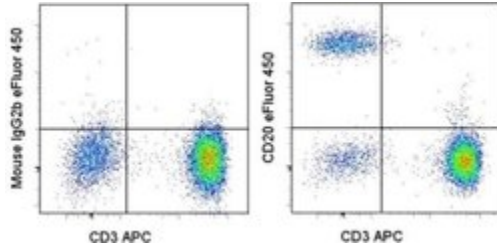
Applications Tested: This 2H7 antibody has been pre-titrated and tested by flow cytometric analysis of normal human peripheral blood cells. This can be used at 5 µL (0.5 µg) per test. A test is defined as the amount (µg) of antibody that will stain a cell sample in a final volume of 100 µL. Cell number should be determined empirically but can range from 10⁵ to 10⁸ cells/test.

eFluor® 450 is an alternative to Pacific Blue®. eFluor® 450 emits at 445 nm and is excited with the Violet laser (405 nm). Please make sure that your instrument is capable of detecting this fluorochoime.

Excitation: 405 nm; **Emission:** 445 nm; **Laser:** Violet Laser.

Filtration: 0.2 µm post-manufacturing filtered.

Product Images For CD20 Monoclonal Antibody (2H7), eFluor 450, eBioscience



CD20 Antibody (48-0209-42) in Flow

Staining of normal human peripheral blood cells with Anti-Human CD3 APC (Product # 17-0038-42) and Mouse IgG2b K Isotype Control eFluor® 450 (Product # 48-4732-82) (left) or Anti-Human CD20 eFluor® 450 (right). Cells in the lymphocyte gate were used for analysis.

[View more figures on thermofisher.com](#)

13 References

Immunohistochemistry (2)

PloS one

Sexual Differences in Cell Loss during the Post-Hatch Development of Song Control Nuclei in the Bengalese Finch.

"Published figure using CD20 monoclonal antibody (Product # 48-0209-42) in Immunohistochemistry"

Authors: Chen X,Li J,Zeng L,Zhang X,Lu X,Zuo M,Zhang X,Zeng S

Species

Not Applicable

Dilution

Not Cited

Year

2016

Nature communications

Tumor-associated B-cells induce tumor heterogeneity and therapy resistance.

"Published figure using CD20 monoclonal antibody (Product # 48-0209-42) in Flow Cytometry"

Authors: Somasundaram R,Zhang G,Fukunaga-Kalabis M,Perego M,Krepler C,Xu X,Wagner C,Hristova D,Zhang J, Tian T,Wei Z,Liu Q,Garg K,Griss J,Hards R,Maurer M,Hafner C,Mayerhöfer M,Karanikas G,Jalili A,Bauer-Pohl V, Wehsengruber F,Rappersberger K,Koller J,Lang R,Hudgens C,Chen G,Tetzlaff M,Wu L,Frederick DT,Scolyer RA,Long GV,Damle M,Ellingsworth C,Grinman L,Choi H,Gavin BJ,Dunagin M,Raj A,Scholler N,Gross L,Beqiri M,Bennett K, Watson I,Schaidler H,Davies MA,Wargo J,Czerniecki BJ,Schuchter L,Herlyn D,Flaherty K,Herlyn M,Wagner SN

Species

Human
Not Applicable

Dilution

Not Cited
Not Cited

Year

2017

Flow Cytometry (11)

PloS one

Experimental inoculation of juvenile rhesus macaques with primate enteric caliciviruses.

"48-0209 was used in Flow cytometry/Cell sorting to show that ReCVs represent an alternative cell culture and animal model to study enteric calicivirus replication, pathogenesis and immunity."

Authors: Sestak K,Feely S,Fey B,Dufour J,Hargitt E,Alvarez X,Pahar B,Gregoricus N,Vinje J,Farkas T

Species

Rhesus monkey

Dilution

1:32

Year

2012

Journal of immunology (Baltimore, Md. : 1950)

Early Emergence of CD19-Negative Human Antibody-Secreting Cells at the Plasmablast to Plasma Cell Transition.

"48-0209 was used in Flow cytometry/Cell sorting to investigate whether human CD19-negative plasma cells are aged cells that have gradually lost CD19 expression."

Authors: Arumugakani G,Stephenson SJ,Newton DJ,Rawstron A,Emery P,Doody GM,McGonagle D,Tooze RM

Species

Human

Dilution

Not Cited

Year

2017

More applications with references on thermofisher.com

For Research Use Only. Not for use in diagnostic procedures. Not for resale without express authorization. Products are warranted to operate or perform substantially in conformance with published Product specifications in effect at the time of sale, as set forth in the Production documentation, specifications and/or accompanying package inserts ("Documentation"). No claim of suitability for use in applications regulated by FDA is made. The warranty provided herein is valid only when used by properly trained individuals. Unless otherwise stated in the Documentation, this warranty is limited to one year from date of shipment when the Product is subjected to normal, proper and intended usage. This warranty does not extend to anyone other than the Buyer. Any model or sample furnished to Buyer is merely illustrative of the general type and quality of goods and does not represent that any Product will conform to such model or sample. NO OTHER WARRANTIES, EXPRESS OR IMPLIED, ARE GRANTED INCLUDING WITHOUT LIMITATION, IMPLIED WARRANTIES OF MERCHANTABILITY, FITNESS FOR ANY PARTICULAR PURPOSE, OR NON INFRINGEMENT. BUYER'S EXCLUSIVE REMEDY FOR NON-CONFORMING PRODUCTS DURING THE WARRANTY PERIOD IS LIMITED TO REPAIR, REPLACEMENT OF OR REFUND FOR THE NON-CONFORMING PRODUCT(S) AT SELLER'S SOLE OPTION. THERE IS NO OBLIGATION TO REPAIR, REPLACE OR REFUND FOR PRODUCTS AS THE RESULT OF (I) ACCIDENT, DISASTER OR EVENT OF FORCE MAJEURE, (II) MISUSE, FAULT OR NEGLIGENCE OF OR BY BUYER, (III) USE OF THE PRODUCTS IN A MANNER FOR WHICH THEY WERE NOT DESIGNED, OR (IV) IMPROPER STORAGE AND HANDLING OF THE PRODUCTS. Unless otherwise expressly stated on the Product or in the documentation accompanying the Product, the Product is intended for research only and is not to be used for any other purpose, including without limitation, unauthorized commercial uses, in vitro diagnostic uses, ex vivo or in vivo therapeutic uses, or any type of consumption by or application to human or animals.