

CD102 (ICAM-2) Monoclonal Antibody (3C4 (mIC2/4)), eFluor™ 450, eBioscience™

Product Details	
Size	100 µg
Species Reactivity	Mouse
Published Species	Mouse
Host/Isotype	Rat / IgG2a, kappa
Recommended Isotype Control	Rat IgG2a kappa Isotype Control (eBR2a), eFluor™ 450, eBioscience™
Class	Monoclonal
Type	Antibody
Clone	3C4 (mIC2/4)
Conjugate	eFluor™ 450
Excitation/Emission Max	405/445 nm
Form	Liquid
Concentration	0.2 mg/mL
Purification	Affinity chromatography
Storage buffer	PBS, pH 7.2
Contains	0.09% sodium azide
Storage conditions	4° C, store in dark, DO NOT FREEZE!
RRID	AB_1548749

Applications	Tested Dilution	Publications
Flow Cytometry (Flow)	1 µg/test	3 Publications

Product Specific Information

Description: The monoclonal antibody 3C4 (mIC2/4) recognizes mouse CD102, also known as intercellular adhesion molecule-2 (ICAM-2). CD102, a member of the Immunoglobulin superfamily of receptors with 2 extracellular Ig domains, binds LFA (CD11a/CD18) and Mac-1 (CD11b/CD18), thereby mediating cellular interactions to lymphocytes. CD102 plays a role in NK cytotoxicity and migration, and lymphocyte recirculation. Expression of CD102 is found on most lymphocytes, monocytes and platelets.

The 3C4 (mIC2/4) antibody blocks interaction of lymphocytes with antigen presenting cells.

Applications Reported: This 3C4 (mIC2/4) antibody has been reported for use in flow cytometric analysis.

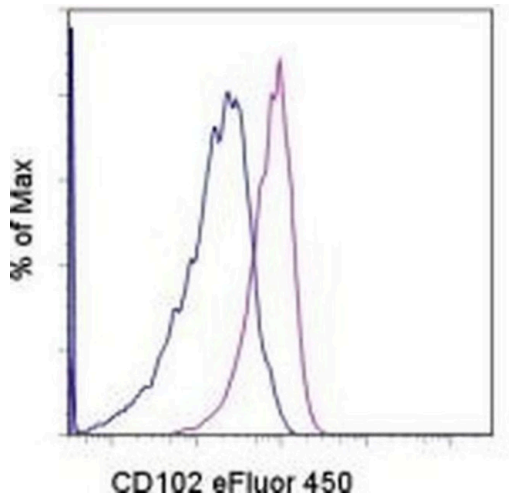
Applications Tested: This 3C4 (mIC2/4) antibody has been tested by flow cytometric analysis of mouse splenocytes. This can be used at less than or equal to 1 µg per test. A test is defined as the amount (µg) of antibody that will stain a cell sample in a final volume of 100 µL. Cell number should be determined empirically but can range from 10⁵ to 10⁸ cells/test. It is recommended that the antibody be carefully titrated for optimal performance in the assay of interest.

eFluor® 450 is an alternative to Pacific Blue®. eFluor® 450 emits at 445 nm and is excited with the Violet laser (405 nm). Please make sure that your instrument is capable of detecting this fluorochrome.

Excitation: 405 nm; Emission: 445 nm; Laser: Violet Laser.

Filtration: 0.2 µm post-manufacturing filtered.

Product Images For CD102 (ICAM-2) Monoclonal Antibody (3C4 (mIC2/4)), eFluor™ 450, eBioscience™



CD102 (ICAM-2) Antibody (48-1021-82) in Flow
Staining of C57BL/6 splenocytes with 0.5 µg of Rat IgG2a kappa Isotype Control eFluor® 450 (Product # 48-4321-82) (blue histogram) or 0.5 µg of Anti-Mouse CD102 (ICAM-2) eFluor® 450 (purple histogram). Total viable cells were used for analysis.

3 References

Flow Cytometry (3)

<p>PloS one</p> <p>Sex-specific stress response and HMGB1 release in pulmonary endothelial cells.</p> <p>"Published figure using CD102 (ICAM-2) monoclonal antibody (Product # 48-1021-82) in Flow Cytometry"</p> <p>Authors: Zemskova M,Kurdyukov S,James J,McClain N,Rafikov R,Rafikova O</p>	<p>Year 2020</p>
<p>The Journal of experimental medicine</p> <p>The Toxoplasma gondii virulence factor ROP16 acts in cis and trans, and suppresses T cell responses.</p> <p>"48-1021 was used in Flow cytometry/Cell sorting to investigate the impact of the ability of Toxoplasma gondii injecting the rhoptyr kinase ROP16 into host cells on infection."</p> <p>Authors: Chen L,Christian DA,Kochanowsky JA,Phan AT,Clark JT,Wang S,Berry C,Oh J,Chen X,Roos DS,Beiting DP, Koshy AA,Hunter CA</p>	<p>Year 2020</p> <p>Species Mouse</p>

[View more Flow references on thermofisher.com](#)

For Research Use Only. Not for use in diagnostic procedures. Not for resale without express authorization. Products are warranted to operate or perform substantially in conformance with published Product specifications in effect at the time of sale, as set forth in the Production documentation, specifications and/or accompanying package inserts ("Documentation"). No claim of suitability for use in applications regulated by FDA is made. The warranty provided herein is valid only when used by properly trained individuals. Unless otherwise stated in the Documentation, this warranty is limited to one year from date of shipment when the Product is subjected to normal, proper and intended usage. This warranty does not extend to anyone other than the Buyer. Any model or sample furnished to Buyer is merely illustrative of the general type and quality of goods and does not represent that any Product will conform to such model or sample. NO OTHER WARRANTIES, EXPRESS OR IMPLIED, ARE GRANTED INCLUDING WITHOUT LIMITATION, IMPLIED WARRANTIES OF MERCHANTABILITY, FITNESS FOR ANY PARTICULAR PURPOSE, OR NON INFRINGEMENT. BUYER'S EXCLUSIVE REMEDY FOR NON-CONFORMING PRODUCTS DURING THE WARRANTY PERIOD IS LIMITED TO REPAIR, REPLACEMENT OF OR REFUND FOR THE NON-CONFORMING PRODUCT(S) AT SELLER'S SOLE OPTION. THERE IS NO OBLIGATION TO REPAIR, REPLACE OR REFUND FOR PRODUCTS AS THE RESULT OF (i) ACCIDENT, DISASTER OR EVENT OF FORCE MAJEURE, (ii) MISUSE, FAULT OR NEGLIGENCE OF OR BY BUYER, (iii) USE OF THE PRODUCTS IN A MANNER FOR WHICH THEY WERE NOT DESIGNED, OR (iv) IMPROPER STORAGE AND HANDLING OF THE PRODUCTS. Unless otherwise expressly stated on the Product or in the documentation accompanying the Product, the Product is intended for research only and is not to be used for any other purpose, including without limitation, unauthorized commercial uses, in vitro diagnostic uses, ex vivo or in vivo therapeutic uses, or any type of consumption by or application to human or animals.