

# CD206 (MMR) Monoclonal Antibody (MR6F3), eFluor™ 450, eBioscience™

| Product Details             |   |
|-----------------------------|---|
| Size                        | 100 µg  |
| Species Reactivity          | Mouse   |
| Host/Isotype                | Rat / IgG2b, kappa  |
| Recommended Isotype Control | Rat IgG2b kappa Isotype Control (eB149/10H5), eFluor™ 450, eBioscience™ |
| Class                       | Monoclonal  |
| Type                        | Antibody  |
| Clone                       | MR6F3   |
| Conjugate                   | eFluor™ 450   |
| Form                        | Liquid  |
| Concentration               | 0.2 mg/mL   |
| Purification                | Affinity chromatography   |
| Storage buffer              | PBS, pH 7.2   |
| Contains                    | 0.09% sodium azide  |
| Storage conditions          | 4° C, store in dark, DO NOT FREEZE!                                     |
| RRID                        | AB_2762721  |

| Applications                 | Tested Dilution | Publications  |
|------------------------------|-----------------|---------------|
| Immunocytochemistry (ICC/IF) | -               | 1 Publication |
| Flow Cytometry (Flow)        | 0.5 µg/test     | 1 Publication |

## Product Specific Information

Description: This MR6F3 antibody recognizes mouse CD206 also known as Macrophage Mannose Receptor (MMR) or Mannose Receptor C, Type 1 (MRC1). CD206 is a 175-kDa, type 1 integral membrane glycoprotein receptor that is present in macrophages, some dendritic cells, as well as liver and lymphoid endothelial cells. CD206 belongs to the C-type lectin family. Extracellular regions of CD206 include an N-terminal cysteine-rich (CR) domain that binds sulfated glycoproteins, a fibronectin II (FNII) domain that binds collagens, and eight carbohydrate recognition domains (CRDs) that bind sugars like mannose and fucose with high affinity. CD206 mediates phagocytic and endocytic uptake of fungal, bacterial, protozoan and viral antigens, and plays an important role in immune defense and immune regulation. A soluble form of CD206 is generated by cleavage of the full-length protein, and it can be detected in in vitro macrophage cell culture supernatants and in mouse serum. CD206 is considered to be one of the markers of M2 macrophages. Factors inducing its expression include: IL-4, IL-13, M-CSF, IL-6, IL-10, and glucocorticoids, while TNF-alpha, IFN-gamma, TGF-beta, and LPS have been reported to down-regulate expression of CD206.

It has been demonstrated that only a small fraction of CD206 is present at the cell surface, therefore, intracellular staining is recommended.

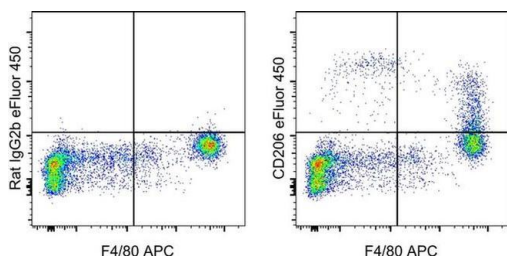
Applications Reported: This MR6F3 antibody has been reported for use in flow cytometric analysis, and intracellular staining followed by flow cytometric analysis.

Applications Tested: This MR6F3 antibody has been tested by intracellular staining and flow cytometric analysis of mouse resident peritoneal exudate cells using the Intracellular Fixation and Permeabilization Buffer Set (cat. 88-8824) and protocol. This can be used at less than or equal to 0.5 µg per test. A test is defined as the amount (µg) of antibody that will stain a cell sample in a final volume of 100 µL. Cell number should be determined empirically but can range from 10<sup>5</sup> to 10<sup>8</sup> cells/test. It is recommended that the antibody be carefully titrated for optimal performance in the assay of interest.

eFluor 450 is an alternative to Pacific Blue. eFluor 450 emits at 445 nm and is excited with the violet laser line (405 nm). Please make sure that your instrument is capable of detecting this fluorochrome.

Excitation: 405 nm; Emission: 445 nm; Laser: Violet Laser

## Product Images For CD206 (MMR) Monoclonal Antibody (MR6F3), eFluor™ 450, eBioscience™



### CD206 (MMR) Antibody (48-2061-82) in Flow

BALB/c mouse resident peritoneal exudate cells were stained with F4/80 Monoclonal Antibody, APC (Product # 17-4801-82) followed by fixation and permeabilization with the Intracellular Fixation and Permeabilization Buffer Set (Product # 88-8824-00). Cells were then intracellularly stained with 0.25 µg of Rat IgG2b kappa Isotype Control, eFluor 450 (Product # 48-4031-82) (left) or 0.25 µg of CD206 (MMR) Monoclonal Antibody, eFluor 450 (right). Total viable cells were used for analysis.

## 2 References

### Immunocytochemistry (1)

Journal of bone and mineral research : the official journal of the American Society for Bone and Mineral Research

#### Macrophage GIT1 Contributes to Bone Regeneration by Regulating Inflammatory Responses in an ERK/NRF2-Dependent Way.

"Published figure using CD206 (MMR) monoclonal antibody (Product # 48-2061-82) in Immunocytochemistry"

Authors: Zhao SJ,Liu H,Chen J,Qian DF,Kong FQ,Jie J,Yin GY,Li QQ,Fan J

Species  
Not Applicable

Dilution  
Not Cited

Year  
2020

### Flow Cytometry (1)

Stem cell research & therapy

#### Adrenomedullin 2 improves bone regeneration in type 1 diabetic rats by restoring imbalanced macrophage polarization and impaired osteogenesis.

"Published figure using CD206 (MMR) monoclonal antibody (Product # 48-2061-82) in Flow Cytometry"

Authors: Wang F,Kong L,Wang W,Shi L,Wang M,Chai Y,Xu J,Kang Q

Species  
Not Applicable

Dilution  
Not Cited

Year  
2021

For Research Use Only. Not for use in diagnostic procedures. Not for resale without express authorization. Products are warranted to operate or perform substantially in conformance with published Product specifications in effect at the time of sale, as set forth in the Production documentation, specifications and/or accompanying package inserts ("Documentation"). No claim of suitability for use in applications regulated by FDA is made. The warranty provided herein is valid only when used by properly trained individuals. Unless otherwise stated in the Documentation, this warranty is limited to one year from date of shipment when the Product is subjected to normal, proper and intended usage. This warranty does not extend to anyone other than the Buyer. Any model or sample furnished to Buyer is merely illustrative of the general type and quality of goods and does not represent that any Product will conform to such model or sample. NO OTHER WARRANTIES, EXPRESS OR IMPLIED, ARE GRANTED INCLUDING WITHOUT LIMITATION, IMPLIED WARRANTIES OF MERCHANTABILITY, FITNESS FOR ANY PARTICULAR PURPOSE, OR NON-INFRINGEMENT. BUYER'S EXCLUSIVE REMEDY FOR NON-CONFORMING PRODUCTS DURING THE WARRANTY PERIOD IS LIMITED TO REPAIR, REPLACEMENT OF OR REFUND FOR THE NON-CONFORMING PRODUCT(S) AT SELLER'S SOLE OPTION. THERE IS NO OBLIGATION FOR REPAIR, REPLACE OR REFUND FOR PRODUCTS AS THE RESULT OF (I) ACCIDENT, DISASTER OR EVENT OF FORCE MAJEURE, (II) MISUSE, FAULT OR NEGLIGENCE OF OR BY BUYER, (III) USE OF THE PRODUCTS IN A MANNER FOR WHICH THEY WERE NOT DESIGNED, OR (IV) IMPROPER STORAGE AND HANDLING OF THE PRODUCTS. Unless otherwise expressly stated on the Product or in the documentation accompanying the Product, the Product is intended for research only and is not to be used for any other purpose, including without limitation, unauthorized commercial uses, in vitro diagnostic uses, ex vivo or in vivo therapeutic uses, or any type of consumption by or application to human or animals.