

Phospho-Connexin 43 (Ser368) Polyclonal Antibody

Product Details	
Size	100 µL
Species	Bovine, Dog, Chicken, Guinea pig, Human, Mouse, Rat, Zebrafish
Expression System	Rabbit / IgG
Class	Polyclonal
Type	Antibody
Conjugate	Unconjugated
Immunogen	Phosphopeptide corresponding to amino acid residues surrounding the phosphoserine 368 of rat connexin 43
Form	Liquid
Purification	Affinity chromatography
Storage buffer	0.01M HEPES, pH 7.5, with 50% glycerol, 100µg/mL BSA, 0.15M NaCl
Contains	no preservative
Storage Conditions	Store at 4°C short term. For long term storage, store at -20°C, avoiding freeze/thaw cycles.
RRID	AB_2533845

Applications	Tested Dilution	Publications
Immunohistochemistry (Paraffin) (IHC (P))	1:10-1:100	-
Western Blot (WB)	1:1000	1 Publication
Immunocytochemistry (ICC)	-	1 Publication

Product Images For Phospho-Connexin 43 (Ser368) Polyclonal Antibody

Phospho-Connexin 43 (Ser368) Antibody (48-3000) in IHC (P)

Immunohistochemistry analysis of Phospho-Connexin 43 (pS368) showing staining in the membrane and cytoplasm of paraffin-embedded mouse heart tissue (right) compared to a negative control without primary antibody (left). To expose target proteins, antigen retrieval was performed using 10mM sodium citrate (pH 6.0), microwaved for 8-15 min. Following antigen retrieval, tissues were blocked in 3% H₂O₂-methanol for 15 min at room temperature, washed with ddH₂O and PBS, and then probed with a Phospho-Connexin 43 (pS368) polyclonal antibody (Product # 48-3000) diluted in 3% BSA-PBS at a dilution of 1:50 overnight at 4°C in a humidified chamber. Tissues were washed extensively in PBST and detection was performed using an HRP-conjugated secondary antibody followed by colorimetric detection using a DAB kit. Tissues were counterstained with hematoxylin and dehydrated with ethanol and xylene to prep for mounting.

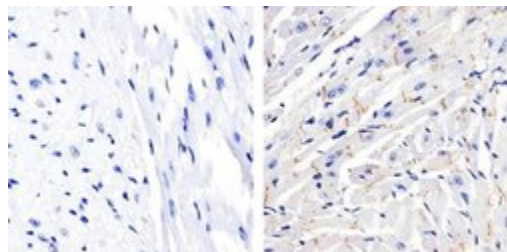
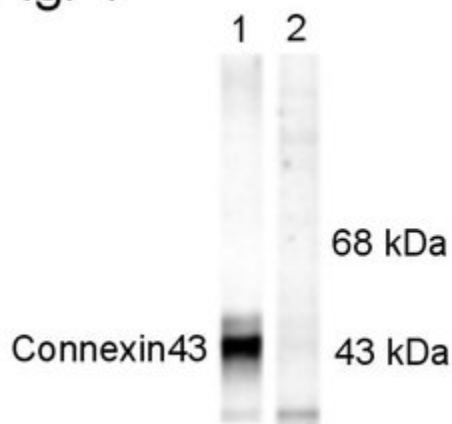


Fig. 1

Phospho-Connexin 43 (Ser368) Antibody (48-3000) in WB

Western blot analysis of Phospho-Connexin 43 pSer368 in rat hippocampal lysate showing specific immunolabeling of the ~43 kDa Connexin 43 phosphorylated at Ser368 (Lane 1). The phosphospecificity of this labeling is shown Lane 2 (lambda-phosphatase). The blot is identical to the control except that it was incubated in lambda-phosphatase (1200 units for 30 min) before being exposed to the Phospho-Connexin 43 pSer368 polyclonal antibody (Product # 48-3000). The immunolabeling of Connexin 43 is completely eliminated by treatment with lambda-phosphatase.



2 References

Western Blot (1)

Glia
Subcellular reorganization and altered phosphorylation of the astrocytic gap junction protein connexin43 in human and experimental temporal lobe epilepsy.

"Published figure using Phospho-Connexin 43 (Ser368) polyclonal antibody (Product # 48-3000) in Western Blot"

Authors: Deshpande T, Li T, Herde MK, Becker A, Vatter H, Schwarz MK, Henneberger C, Steinhäuser C, Bedner P

Species
Not Applicable

Dilution
Not Cited

Year
2017

Immunocytochemistry (1)

Circulation research
iPS programmed without c-MYC yield proficient cardiogenesis for functional heart chimerism.

"48-3000 was used in immunocytochemistry to discuss methods to generate induced pluripotent stem cells"

Authors: Martinez-Fernandez A, Nelson TJ, Yamada S, Reyes S, Alekseev AE, Perez-Terzic C, Ikeda Y, Terzic A

Species
Not Applicable

Dilution
1:200

Year
2009

For Research Use Only. Not for use in diagnostic procedures. Not for resale without express authorization. Products are warranted to operate or perform substantially in conformance with published Product specifications in effect at the time of sale, as set forth in the Production documentation, specifications and/or accompanying package inserts ("Documentation"). No claim of suitability for use in applications regulated by FDA is made. The warranty provided herein is valid only when used by properly trained individuals. Unless otherwise stated in the Documentation, this warranty is limited to one year from date of shipment when the Product is subjected to normal, proper and intended usage. This warranty does not extend to anyone other than the Buyer. Any model or sample furnished to Buyer is merely illustrative of the general type and quality of goods and does not represent that any Product will conform to such model or sample. NO OTHER WARRANTIES, EXPRESS OR IMPLIED, ARE GRANTED INCLUDING WITHOUT LIMITATION, IMPLIED WARRANTIES OF MERCHANTABILITY, FITNESS FOR ANY PARTICULAR PURPOSE, OR NON INFRINGEMENT. BUYER'S EXCLUSIVE REMEDY FOR NON-CONFORMING PRODUCTS DURING THE WARRANTY PERIOD IS LIMITED TO REPAIR, REPLACEMENT OF OR REFUND FOR THE NON-CONFORMING PRODUCT(S) AT SELLER'S SOLE OPTION. THERE IS NO OBLIGATION TO REPAIR, REPLACE OR REFUND FOR PRODUCTS AS THE RESULT OF (I) ACCIDENT, DISASTER OR EVENT OF FORCE MAJEURE, (II) MISUSE, FAULT OR NEGLIGENCE OF OR BY BUYER, (III) USE OF THE PRODUCTS IN A MANNER FOR WHICH THEY WERE NOT DESIGNED, OR (IV) IMPROPER STORAGE AND HANDLING OF THE PRODUCTS. Unless otherwise expressly stated on the Product or in the documentation accompanying the Product, the Product is intended for research only and is not to be used for any other purpose, including without limitation, unauthorized commercial uses, in vitro diagnostic uses, ex vivo or in vivo therapeutic uses, or any type of consumption by or application to human or animals.