

# Ki-67 Monoclonal Antibody (20Raj1), eFluor 450, eBioscience™

Product Details	
Size	100 Tests
Species Reactivity	Dog, Human
Published Species	Artificial Control, Human
Host/Isotype	Mouse / IgG1, kappa
Recommended Isotype Control	Mouse IgG1 kappa Isotype Control (P3.6.2.8.1), eFluor 450, eBioscience™
Class	Monoclonal
Type	Antibody
Clone	20Raj1
Conjugate	eFluor® 450
Form	Liquid
Concentration	5 µL/Test
Purification	Affinity chromatography
Storage buffer	PBS, pH 7.2, with 0.1% gelatin, 0.2% BSA
Contains	0.09% sodium azide
Storage Conditions	4° C, store in dark, DO NOT FREEZE!
RRID	AB_10804033

Applications	Tested Dilution	Publications
Immunohistochemistry (IHC)	-	1 Publication
Immunocytochemistry (ICC)	-	1 Publication
Immunofluorescence (IF)	-	3 Publications
Flow Cytometry (Flow)	5 µL (0.06 µg)/test	9 Publications

## Product Specific Information

**Description:** The monoclonal antibody 20Raj1 recognizes the human Ki-67 protein. Two isoforms of Ki-67 exist, a 345 and 395 kDa form that are expressed in dividing cells. Ki-67 is expressed in all cell types and is detectable during active phases of the cell cycle (G1, S, G2, and mitosis) but is absent from resting cells (G0). During interphase, Ki-67 expression is localized to the nucleus but redistributes to the chromosomes during mitosis and has specifically been found to associate with heterochromatin-bound proteins such as chromobox protein homolog 3 (CBX3). In studies of tumor cells, Ki-67 expression has been used as a marker for determining the fraction of proliferating cells within a given population of tumor cells.

This monoclonal antibody 20Raj1 recognizes canine Ki-67.

**Applications Reported:** This 20Raj1 antibody has been reported for use in intracellular staining using the Foxp3 Staining Buffers followed by flow cytometric analysis.

**Applications Tested:** This 20Raj1 antibody has been pre-titrated and tested by intracellular staining using Foxp3/Transcription Factor Buffers Set (cat. 00-5523) and protocol of normal human peripheral blood cells. Please see Best Protocols Section

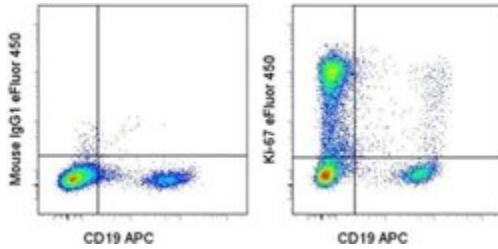
(Staining intracellular Antigens for Flow Cytometry) for staining protocol (refer to Protocol B: One-step protocol for intracellular (nuclear) proteins). This can be used at 5  $\mu\text{L}$  (0.06  $\mu\text{g}$ ) per test. A test is defined as the amount ( $\mu\text{g}$ ) of antibody that will stain a cell sample in a final volume of 100  $\mu\text{L}$ . Cell number should be determined empirically but can range from  $10^5$  to  $10^8$  cells/test.

eFluor® 450 is an alternative to Pacific Blue®. eFluor® 450 emits at 445 nm and is excited with the Violet laser (405 nm). Please make sure that your instrument is capable of detecting this fluorochoime.

Excitation: 405 nm; Emission: 445 nm; Laser: Violet Laser.

Filtration: 0.2  $\mu\text{m}$  post-manufacturing filtered.

## Product Images For Ki-67 Monoclonal Antibody (20Raj1), eFluor 450, eBioscience™



### Ki-67 Antibody (48-5699-42) in Flow

Intracellular staining of normal human peripheral blood cells stimulated for 2 days with immobilized Anti-Human CD3 (Product # 16-0037-81) with Anti-Human CD19 APC (Product # 17-0199-42) and Mouse IgG1 K Isotype Control eFluor® 450 (Product # 48-4714-82) (left) or Anti-Human Ki-67 eFluor® 450 (right) using Foxp3 /Transcription Factor Buffers Set (Product # 00-5523-00) and protocol. Cells in the lymphocyte gate were used for analysis.

[View more figures on thermofisher.com](https://www.thermofisher.com)

## 14 References

### Immunohistochemistry (1)

Stem cells (Dayton, Ohio)

#### Biliary tree stem cells, precursors to pancreatic committed progenitors: evidence for possible life-long pancreatic organogenesis.

"Published figure using Ki-67 monoclonal antibody (Product # 48-5699-42) in Immunofluorescence"

Authors: Wang Y, Lanzoni G, Carpino G, Cui CB, Dominguez-Bendala J, Wauthier E, Cardinale V, Oikawa T, Pileggi A, Gerber D, Furth ME, Alvaro D, Gaudio E, Inverardi L, Reid LM

**Species**  
Not Applicable

**Dilution**  
Not Cited

**Year**  
2013

### Immunocytochemistry (1)

Arteriosclerosis, thrombosis, and vascular biology

#### S100A6 Regulates Endothelial Cell Cycle Progression by Attenuating Antiproliferative Signal Transducers and Activators of Transcription 1 Signaling.

"Published figure using Ki-67 monoclonal antibody (Product # 48-5699-42) in Immunocytochemistry"

Authors: Lerchenmüller C, Heißenberg J, Damilano F, Bezzeridis VJ, Krämer I, Bochaton-Piallat ML, Hirschberg K, Busch M, Katus HA, Peppel K, Rosenzweig A, Busch H, Boerries M, Most P

**Species**  
Not Applicable

**Dilution**  
Not Cited

**Year**  
2016

### Immunofluorescence (3)

Stem cells (Dayton, Ohio)

#### Biliary tree stem cells, precursors to pancreatic committed progenitors: evidence for possible life-long pancreatic organogenesis.

"Published figure using Ki-67 monoclonal antibody (Product # 48-5699-42) in Immunofluorescence"

Authors: Wang Y, Lanzoni G, Carpino G, Cui CB, Dominguez-Bendala J, Wauthier E, Cardinale V, Oikawa T, Pileggi A, Gerber D, Furth ME, Alvaro D, Gaudio E, Inverardi L, Reid LM

**Species**  
Not Applicable

**Dilution**  
Not Cited

**Year**  
2013

Arteriosclerosis, thrombosis, and vascular biology

#### S100A6 Regulates Endothelial Cell Cycle Progression by Attenuating Antiproliferative Signal Transducers and Activators of Transcription 1 Signaling.

"Published figure using Ki-67 monoclonal antibody (Product # 48-5699-42) in Immunocytochemistry"

Authors: Lerchenmüller C, Heißenberg J, Damilano F, Bezzeridis VJ, Krämer I, Bochaton-Piallat ML, Hirschberg K, Busch M, Katus HA, Peppel K, Rosenzweig A, Busch H, Boerries M, Most P

**Species**  
Not Applicable

**Dilution**  
Not Cited

**Year**  
2016

[View more IF references on thermofisher.com](#)

### More applications with references on thermofisher.com

### Flow (9)

For Research Use Only. Not for use in diagnostic procedures. Not for resale without express authorization. Products are warranted to operate or perform substantially in conformance with published Product specifications in effect at the time of sale, as set forth in the Production documentation, specifications and/or accompanying package inserts ("Documentation"). No claim of suitability for use in applications regulated by FDA is made. The warranty provided herein is valid only when used by properly trained individuals. Unless otherwise stated in the Documentation, this warranty is limited to one year from date of shipment when the Product is subjected to normal, proper and intended usage. This warranty does not extend to anyone other than the Buyer. Any model or sample furnished to Buyer is merely illustrative of the general type and quality of goods and does not represent that any Product will conform to such model or sample. NO OTHER WARRANTIES, EXPRESS OR IMPLIED, ARE GRANTED INCLUDING WITHOUT LIMITATION, IMPLIED WARRANTIES OF MERCHANTABILITY, FITNESS FOR ANY PARTICULAR PURPOSE, OR NON INFRINGEMENT. BUYER'S EXCLUSIVE REMEDY FOR NON-CONFORMING PRODUCTS DURING THE WARRANTY PERIOD IS LIMITED TO REPAIR, REPLACEMENT OF OR REFUND FOR THE NON-CONFORMING PRODUCT(S) AT SELLER'S SOLE OPTION. THERE IS NO OBLIGATION TO REPAIR, REPLACE OR REFUND FOR PRODUCTS AS THE RESULT OF (I) ACCIDENT, DISASTER OR EVENT OF FORCE MAJEURE, (II) MISUSE, FAULT OR NEGLIGENCE OF OR BY BUYER, (III) USE OF THE PRODUCTS IN A MANNER FOR WHICH THEY WERE NOT DESIGNED, OR (IV) IMPROPER STORAGE AND HANDLING OF THE PRODUCTS. Unless otherwise expressly stated on the Product or in the documentation accompanying the Product, the Product is intended for research only and is not to be used for any other purpose, including without limitation, unauthorized commercial uses, in vitro diagnostic uses, ex vivo or in vivo therapeutic uses, or any type of consumption by or application to human or animals.