

CD366 (TIM3) Monoclonal Antibody (8B.2C12), eFluor™ 450, eBioscience™

Product Details	
Size	100 µg
Species Reactivity	Mouse
Published Species	Mouse
Host/Isotype	Rat / IgG1, kappa
Recommended Isotype Control	Rat IgG1 kappa Isotype Control (eBRG1), eFluor™ 450, eBioscience™
Class	Monoclonal
Type	Antibody
Clone	8B.2C12
Conjugate	eFluor™ 450
Excitation/Emission Max	405/445 nm
Form	Liquid
Concentration	0.2 mg/mL
Purification	Affinity chromatography
Storage buffer	PBS, pH 7.2
Contains	0.09% sodium azide
Storage conditions	4° C, store in dark, DO NOT FREEZE!
RRID	AB_2574081

Applications	Tested Dilution	Publications
Immunohistochemistry (IHC)	-	1 Publication
Flow Cytometry (Flow)	0.25 µg/test	5 Publications
Immunoprecipitation (IP)	-	1 Publication
Neutralization (Neu)	-	1 Publication
Functional Assay (FN)	-	1 Publication

Product Specific Information

Description: The 8B.2C12 monoclonal antibody reacts with mouse CD366 (TIM3), a Th1-specific cell surface protein. CD366 is a type I transmembrane protein and contains an immunoglobulin and a mucin-like domain in its extracellular portion and a tyrosine phosphorylation motif in its cytoplasmic portion. CD366 is expressed selectively by differentiated CD4+ Th1 and CD8+ Tc1, but is absent on Th2 and Tc2. Other hematopoietic cell types, including naive T cells, B cells, macrophages and dendritic cells, do not express CD366, at least at the protein level. Expression of CD366 is upregulated at a late stage of T cell differentiation on Th1 cells after 3 rounds of in vitro polarization suggesting a role for this molecule in the transport or effector function of Th1 cells rather than a contribution to T cell differentiation. In an experimental autoimmune encephalomyelitis (EAE) model, CD366 was shown to be expressed on most CD4+ and CD8+ T cells in the central nervous system at the onset of clinical signs of disease, while less than 2% of CD4+ cells in the periphery expressed CD366 after immunization. In this model, in vivo administration of 8B.2C12 resulted in a hyperacute and atypical disease phenotype. It is postulated that the engagement of CD366 during T cell activation results in the expansion and activation of macrophages and increased severity of autoimmune disease. The Tim gene family may have an important role in the regulation of autoimmunity and allergies.

The 8B.2C12 antibody binds to the BALB/c allele of CD366 while reactivity to the C57Bl/6 allele is significantly weaker.

Applications Reported: This 8B.2C12 antibody has been reported for use in flow cytometric analysis.

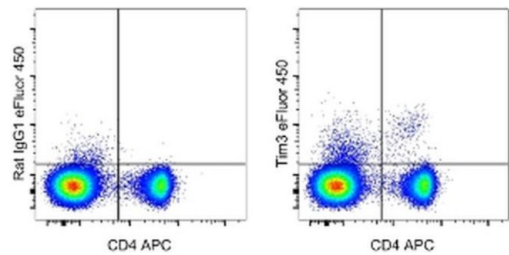
Applications Tested: This 8B.2C12 antibody has been tested by flow cytometric analysis of mouse splenocytes. This can be used at less than or equal to 0.25 µg per test. A test is defined as the amount (µg) of antibody that will stain a cell sample in a final volume of 100 µL. Cell number should be determined empirically but can range from 10⁵ to 10⁸ cells/test. It is recommended that the antibody be carefully titrated for optimal performance in the assay of interest.

eFluor® 450 is an alternative to Pacific Blue®. eFluor® 450 emits at 445 nm and is excited with the Violet laser (405 nm). Please make sure that your instrument is capable of detecting this fluorochohme.

Excitation: 405 nm; Emission: 445 nm; Laser: Violet Laser.

Filtration: 0.2 µm post-manufacturing filtered.

Product Images For CD366 (TIM3) Monoclonal Antibody (8B.2C12), eFluor™ 450, eBioscience™



CD366 (TIM3) Antibody (48-5871-82) in Flow
Staining of BALB/c splenocytes with Anti-Mouse CD4 APC (Product # 17-0042-82) and 0.125 µg of Rat IgG1 K Isotype Control eFluor® 450 (Product # 48-4301-82) (left) or 0.125 µg of Anti-Mouse CD366 (TIM-3) eFluor® 450 (right). Cells in the lymphocyte gate were used for analysis.

[View more figures on thermofisher.com](https://thermofisher.com)

Immunohistochemistry (1)

<p>Journal of immunology (Baltimore, Md. : 1950)</p> <p>Cutting edge: atopy promotes Th2 responses to alloantigens and increases the incidence and tempo of corneal allograft rejection.</p> <p>Authors: Beauregard C,Stevens C,Mayhew E,Niederkorn JY</p>	<p>Year 2005</p>
--	-----------------------------

Flow Cytometry (5)

<p>Oncoimmunology</p> <p>PD-1 and LAG-3 blockade improve anti-tumor vaccine efficacy.</p> <p>"Published figure using CD366 (TIM3) monoclonal antibody (Product # 48-5871-82) in Flow Cytometry"</p> <p>Authors: Zahm CD,Moseman JE,Delmastro LE,G Mcneel D</p>	<p>Year 2021</p>
--	-----------------------------

<p>Cell reports</p> <p>CD8⁺ T Cell Functional Exhaustion Overrides Pregnancy-Induced Fetal Antigen Alloimmunization.</p> <p>"48-5871-82 was used in Flow Cytometry to demonstrate distinct mechanisms whereby fetal tolerance is maintained during primary compared with subsequent pregnancies."</p> <p>Authors: Kinder JM,Turner LH,Stelzer IA,Miller-Handley H,Burg A,Shao TY,Pham G,Way SS</p>	<p>Year 2020</p> <p>Species Mouse</p>
---	---

[View more Flow references on thermofisher.com](#)

Immunoprecipitation (1)

<p>mBio</p> <p>Leishmania donovani Impedes Antileishmanial Immunity by Suppressing Dendritic Cells via the TIM-3 Receptor.</p> <p>"Published figure using CD366 (TIM3) monoclonal antibody (Product # 48-5871-82) in Immunoprecipitation"</p> <p>Authors: Akhtar MN,Kumar S,Sen P</p>	<p>Year 2022</p>
---	-----------------------------

More applications with references on thermofisher.com

Neu (1) **FN (1)**

For Research Use Only. Not for use in diagnostic procedures. Not for resale without express authorization. Products are warranted to operate or perform substantially in conformance with published Product specifications in effect at the time of sale, as set forth in the Production documentation, specifications and/or accompanying package inserts ("Documentation"). No claim of suitability for use in applications regulated by FDA is made. The warranty provided herein is valid only when used by properly trained individuals. Unless otherwise stated in the Documentation, this warranty is limited to one year from date of shipment when the Product is subjected to normal, proper and intended usage. This warranty does not extend to anyone other than the Buyer. Any model or sample furnished to Buyer is merely illustrative of the general type and quality of goods and does not represent that any Product will conform to such model or sample. NO OTHER WARRANTIES, EXPRESS OR IMPLIED, ARE GRANTED INCLUDING WITHOUT LIMITATION, IMPLIED WARRANTIES OF MERCHANTABILITY, FITNESS FOR ANY PARTICULAR PURPOSE, OR NON INFRINGEMENT. BUYER'S EXCLUSIVE REMEDY FOR NON-CONFORMING PRODUCTS DURING THE WARRANTY PERIOD IS LIMITED TO REPAIR, REPLACEMENT OF OR REFUND FOR THE NON-CONFORMING PRODUCT(S) AT SELLER'S SOLE OPTION. THERE IS NO OBLIGATION TO REPAIR, REPLACE OR REFUND FOR PRODUCTS AS THE RESULT OF (i) ACCIDENT, DISASTER OR EVENT OF FORCE MAJEURE, (ii) MISUSE, FAULT OR NEGLIGENCE OF OR BY BUYER, (iii) USE OF THE PRODUCTS IN A MANNER FOR WHICH THEY WERE NOT DESIGNED, OR (iv) IMPROPER STORAGE AND HANDLING OF THE PRODUCTS. Unless otherwise expressly stated on the Product or in the documentation accompanying the Product, the Product is intended for research only and is not to be used for any other purpose, including without limitation, unauthorized commercial uses, in vitro diagnostic uses, ex vivo or in vivo therapeutic uses, or any type of consumption by or application to human or animals.