

# IL-6 Monoclonal Antibody (MQ2-13A5), eFluor™ 450, eBioscience™

Product Details	
Size	100 Tests
Species Reactivity	Human
Host/Isotype	Rat / IgG1, kappa
Recommended Isotype Control	Rat IgG1 kappa Isotype Control (eBRG1), eFluor™ 450, eBioscience™
Class	Monoclonal
Type	Antibody
Clone	MQ2-13A5
Conjugate	eFluor™ 450
Excitation/Emission Max	405/445 nm
Form	Liquid
Concentration	5 µL/Test
Purification	Affinity chromatography
Storage buffer	PBS, pH 7.2, with 0.2% BSA
Contains	0.09% sodium azide
Storage conditions	4° C, store in dark, DO NOT FREEZE!
RRID	AB_2574105

Applications	Tested Dilution	Publications
Immunocytochemistry (ICC/IF)	-	1 Publication
Flow Cytometry (Flow)	5 µL (0.125 µg)/test	3 Publications
ELISA (ELISA)	-	2 Publications
T-Cell Activation (TCA)	-	1 Publication

## Product Specific Information

**Description:** The MQ2-13A5 antibody reacts with human interleukin-6 (IL-6), a 21-28 kDa cytokine secreted by a variety of cell types.

**Applications Reported:** This MQ2-13A5 antibody has been reported for use in intracellular staining followed by flow cytometric analysis.

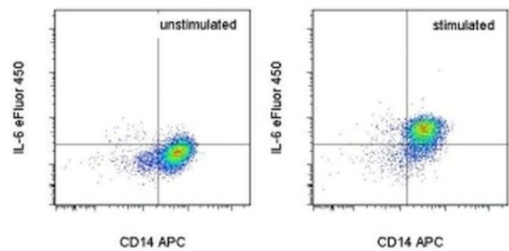
**Applications Tested:** This MQ2-13A5 antibody has been pre-titrated and tested by intracellular staining and flow cytometric analysis of stimulated normal human peripheral blood cells. This can be used at 5 µL (0.125 µg) per test. A test is defined as the amount (µg) of antibody that will stain a cell sample in a final volume of 100 µL. Cell number should be determined empirically but can range from 10<sup>5</sup> to 10<sup>8</sup> cells/test.

eFluor® 450 is an alternative to Pacific Blue®. eFluor® 450 emits at 445 nm and is excited with the Violet laser (405 nm). Please make sure that your instrument is capable of detecting this fluorochrome.

Excitation: 405 nm; Emission: 445 nm; Laser: Violet Laser.

Filtration: 0.2 µm post-manufacturing filtered.

Product Images For IL-6 Monoclonal Antibody (MQ2-13A5), eFluor™ 450, eBioscience™



**IL-6 Antibody (48-7069-42) in Flow**  
Normal human peripheral blood cells were unstimulated (left) or stimulated for 5 hours with LPS (right) in the presence of Protein Transport Inhibitor Cocktail (Product # 00-4980-03). Cells were then fixed and permeabilized with the Intracellular Fixation & Permeabilization Buffer Set (Product # 88-8824-00) and intracellularly stained with Anti-Human CD14 APC (Product # 17-0149-42) and Anti-Human IL-6 eFluor® 450. Cells in the monocyte gate were used for analysis.

View more figures on [thermofisher.com](https://thermofisher.com)

## Immunocytochemistry (1)

Stem cells (Dayton, Ohio)	Year 2017
<b>Mesenchymal Stromal Cell-Derived Interleukin-6 Promotes Epithelial-Mesenchymal Transition and Acquisition of Epithelial Stem-Like Cell Properties in Ameloblastoma Epithelial Cells.</b>	
"Published figure using IL-6 monoclonal antibody (Product # 48-7069-42) in Immunofluorescence"	
Authors: Jiang C,Zhang Q,Shanti RM,Shi S,Chang TH,Carrasco L,Alawi F,Le AD	

## Flow Cytometry (3)

Cancer science	Year 2021
<b>Interleukin 6 regulates the expression of programmed cell death ligand 1 in thyroid cancer.</b>	
"Published figure using IL-6 monoclonal antibody (Product # 48-7069-42) in Flow Cytometry"	
Authors: Zhang GQ,Jiao Q,Shen CT,Song HJ,Zhang HZ,Qiu ZL,Luo QY	

Proceedings of the National Academy of Sciences of the United States of America	Year 2016
<b>Biallelic hypomorphic mutations in a linear deubiquitinase define otulipenia, an early-onset autoinflammatory disease.</b>	
"Published figure using IL-6 monoclonal antibody (Product # 48-7069-42) in Flow Cytometry"	
Authors: Zhou Q,Yu X,Demirkaya E,Deutch N,Stone D,Tsai WL,Kuehn HS,Wang H,Yang D,Park YH,Ombrello AK,Blake M,Romeo T,Remmers EF,Chae JJ,Mullikin JC,Güzel F,Milner JD,Boehm M,Rosenzweig SD,Gadina M,Welch SB,Özen S,Topaloglu R,Abinun M,Kastner DL,Aksentjevich I	

[View more Flow references on thermofisher.com](#)

## ELISA (2)

Scientific reports	Year 2021
<b>PLC2 regulates TREM2 signalling and integrin-mediated adhesion and migration of human iPSC-derived macrophages.</b>	
"Published figure using IL-6 monoclonal antibody (Product # 48-7069-42) in ELISA"	
Authors: Obst J,Hall-Roberts HL,Smith TB,Kreuzer M,Magno L,Di Daniel E,Davis JB,Mead E	

## More applications with references on thermofisher.com

## TCA (1)

For Research Use Only. Not for use in diagnostic procedures. Not for resale without express authorization. Products are warranted to operate or perform substantially in conformance with published Product specifications in effect at the time of sale, as set forth in the Production documentation, specifications and/or accompanying package inserts ("Documentation"). No claim of suitability for use in applications regulated by FDA is made. The warranty provided herein is valid only when used by properly trained individuals. Unless otherwise stated in the Documentation, this warranty is limited to one year from date of shipment when the Product is subjected to normal, proper and intended usage. This warranty does not extend to anyone other than the Buyer. Any model or sample furnished to Buyer is merely illustrative of the general type and quality of goods and does not represent that any Product will conform to such model or sample. NO OTHER WARRANTIES, EXPRESS OR IMPLIED, ARE GRANTED INCLUDING WITHOUT LIMITATION, IMPLIED WARRANTIES OF MERCHANTABILITY, FITNESS FOR ANY PARTICULAR PURPOSE, OR NON INFRINGEMENT. BUYER'S EXCLUSIVE REMEDY FOR NON-CONFORMING PRODUCTS DURING THE WARRANTY PERIOD IS LIMITED TO REPAIR, REPLACEMENT OF OR REFUND FOR THE NON-CONFORMING PRODUCT(S) AT SELLER'S SOLE OPTION. THERE IS NO OBLIGATION TO REPAIR, REPLACE OR REFUND FOR PRODUCTS AS THE RESULT OF (I) ACCIDENT, DISASTER OR EVENT OF FORCE MAJEURE, (II) MISUSE, FAULT OR NEGLIGENCE OF OR BY BUYER, (III) USE OF THE PRODUCTS IN A MANNER FOR WHICH THEY WERE NOT DESIGNED, OR (IV) IMPROPER STORAGE AND HANDLING OF THE PRODUCTS. Unless otherwise expressly stated on the Product or in the documentation accompanying the Product, the Product is intended for research only and is not to be used for any other purpose, including without limitation, unauthorized commercial uses, in vitro diagnostic uses, ex vivo or in vivo therapeutic uses, or any type of consumption by or application to human or animals.