

# CK1 epsilon Polyclonal Antibody

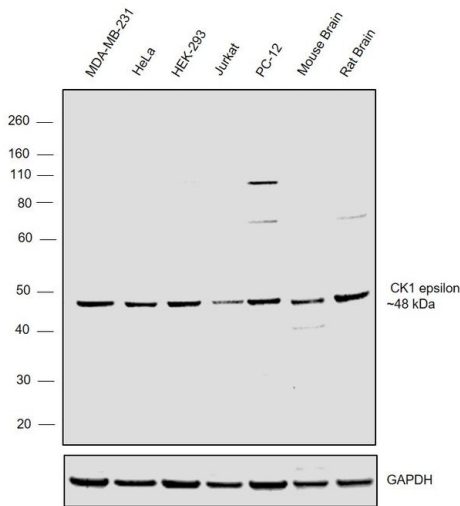
Product Details	
Size	100 µg
Species Reactivity	Human, Mouse, Rat
Published Species	Human
Host/Isotype	Rabbit / IgG
Class	Polyclonal
Type	Antibody
Conjugate	Unconjugated
Immunogen	Synthetic peptide derived from the N-terminal region of the human casein kinase 1 epsilon protein (Accession# NP_689407), which is identical to mouse and rat sequence.
Form	Liquid
Concentration	0.25 mg/mL
Purification	Antigen affinity chromatography
Storage buffer	PBS, pH 7.4
Contains	0.1% sodium azide
Storage conditions	-20°C
RRID	AB_2532252

Applications	Tested Dilution	Publications
Western Blot (WB)	1-3 µg/mL	1 Publication
Immunocytochemistry (ICC/IF)	2 µg/mL	-
Immunoprecipitation (IP)	Assay-dependent	-

## Product Images For CK1 epsilon Polyclonal Antibody

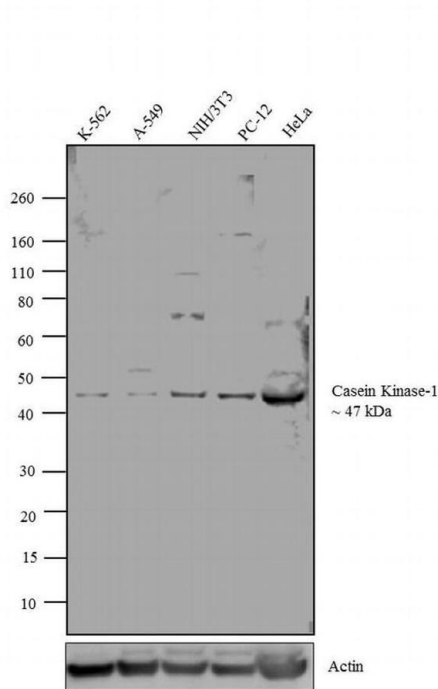
### CK1 epsilon Antibody (487600) in WB

Western blot was performed using Anti-CK1 epsilon Polyclonal Antibody (Product # 487600) and a 48 kDa band corresponding to CK1 epsilon was observed across the panel tested. Whole cell extracts (30 µg lysate) of MDA-MB-231 (Lane 1), HeLa (Lane 2), HEK-293 (Lane 3), Jurkat (Lane 4), PC-12 (Lane 5), Mouse Brain (Lane 6) and Rat Brain (Lane 7) were electrophoresed using NuPAGE™ 4-12% Bis-Tris Protein Gel (Product # NP0322BOX). Resolved proteins were then transferred onto a Nitrocellulose membrane (Product # IB23001) by iBlot® 2 Dry Blotting System (Product # IB21001). The blot was probed with the primary antibody (2 µg/mL) and detected by chemiluminescence with Goat anti-Rabbit IgG (Heavy Chain) Superclonal™ Recombinant Secondary Antibody, HRP (Product # A27036, 1:4000 dilution) using the iBright FL 1000 (Product # A32752). Chemiluminescent detection was performed using Novex® ECL Chemiluminescent Substrate Reagent Kit (Product # WP20005).



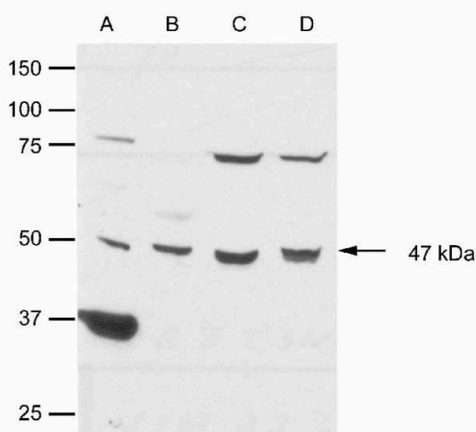
### CK1 epsilon Antibody (487600) in WB

Western blot analysis was performed using whole cell extracts (30 µg lysate) of K-562 (Lane 1), A-549 (Lane 2), NIH/3T3 (Lane 3), PC-12 (Lane 4), and HeLa (Lane 5). The blots were probed with Anti-Casein Kinase-1 Rabbit Polyclonal Antibody (Product # 487600, 1-3 µg/mL) and detected by chemiluminescence using Goat anti-Rabbit IgG (Heavy Chain) Superclonal™ Secondary Antibody, HRP conjugate (Product # A27036, 0.4 µg/mL, 1:2500 dilution). A 47 kDa band corresponding to Casein Kinase-1 was observed across the cell lines tested. Known quantity of protein samples were electrophoresed using Novex® NuPAGE® 10 % Bis-Tris gel (Product # NP0302BOX), XCell SureLock™ Electrophoresis System (Product # EI0002) and Novex® Sharp Pre-Stained Protein Standard (Product # LC5800). Resolved proteins were then transferred onto a nitrocellulose membrane with iBlot® 2 Dry Blotting System (Product # IB21001). The membrane was probed with the relevant primary and secondary Antibody using iBind™ Flex Western Starter Kit (Product # SLF2000S). Chemiluminescent detection was performed using Pierce™ ECL Western Blotting Substrate (Product # 32106).



### CK1 epsilon Antibody (487600) in WB

Western blot analysis of lysates from human CSNK1 ORF (IOH59150) transfected HEK293 cells (lane 1), NIH3T3 cells (lane 2), mouse brain (lane 3) and rat brain (lane 4) using rabbit anti-casein kinase 1 epsilon antibody (Product # 487600).



View more figures on [thermofisher.com](https://thermofisher.com)

1 Reference

Western Blot (1)

<b>Nature communications</b>	<b>Year</b> 2016
<b>A bead-based western for high-throughput cellular signal transduction analyses.</b>	<b>Species</b> Human
"487600 was used in western blot identify and characterize alterations in signal transduction that occur during the development Lapatinib resistance"	<b>Dilution</b> 1:200
Authors: Treindl F,Ruprecht B,Beiter Y,Schultz S,Döttinger A,Staebler A,Joos TO,Kling S,Poetz O,Fehm T,Neubauer H,Kuster B,Templin MF	

For Research Use Only. Not for use in diagnostic procedures. Not for resale without express authorization. Products are warranted to operate or perform substantially in conformance with published Product specifications in effect at the time of sale, as set forth in the Production documentation, specifications and/or accompanying package inserts ("Documentation"). No claim of suitability for use in applications regulated by FDA is made. The warranty provided herein is valid only when used by properly trained individuals. Unless otherwise stated in the Documentation, this warranty is limited to one year from date of shipment when the Product is subjected to normal, proper and intended usage. This warranty does not extend to anyone other than the Buyer. Any model or sample furnished to Buyer is merely illustrative of the general type and quality of goods and does not represent that any Product will conform to such model or sample. NO OTHER WARRANTIES, EXPRESS OR IMPLIED, ARE GRANTED INCLUDING WITHOUT LIMITATION, IMPLIED WARRANTIES OF MERCHANTABILITY, FITNESS FOR ANY PARTICULAR PURPOSE, OR NON-INFRINGEMENT. BUYER'S EXCLUSIVE REMEDY FOR NON-CONFORMING PRODUCTS DURING THE WARRANTY PERIOD IS LIMITED TO REPAIR, REPLACEMENT OF OR REFUND FOR THE NON-CONFORMING PRODUCT(S) AT SELLER'S SOLE OPTION. THERE IS NO OBLIGATION TO REPAIR, REPLACE OR REFUND FOR PRODUCTS AS THE RESULT OF (I) ACCIDENT, DISASTER OR EVENT OF FORCE MAJEURE, (II) MISUSE, FAULT OR NEGLIGENCE OF OR BY BUYER, (III) USE OF THE PRODUCTS IN A MANNER FOR WHICH THEY WERE NOT DESIGNED, OR (IV) IMPROPER STORAGE AND HANDLING OF THE PRODUCTS. Unless otherwise expressly stated on the Product or in the documentation accompanying the Product, the Product is intended for research only and is not to be used for any other purpose, including without limitation, unauthorized commercial uses, in vitro diagnostic uses, ex vivo or in vivo therapeutic uses, or any type of consumption by or application to human or animals.