

CD20 Monoclonal Antibody (L26), eFluor™ 660, eBioscience™

Product Details	
Size	25 µg
Species Reactivity	Cynomolgus monkey, Human, Rhesus monkey
Published Species	Human
Host/Isotype	Mouse / IgG2a, kappa
Recommended Isotype Control	Mouse IgG2a kappa Isotype Control (eBM2a), eFluor™ 660, eBioscience™
Class	Monoclonal
Type	Antibody
Clone	L26
Conjugate	eFluor™ 660
Excitation/Emission Max	651/668 nm
Form	Liquid
Concentration	0.2 mg/mL
Purification	Affinity chromatography
Storage buffer	PBS, pH 7.2
Contains	0.09% sodium azide
Storage conditions	4° C, store in dark, DO NOT FREEZE!
RRID	AB_11151691

Applications	Tested Dilution	Publications
Western Blot (WB)	1 µg/mL	-
Immunohistochemistry (IHC)	5-20 µg/mL	4 Publications
Immunohistochemistry (Paraffin) (IHC (P))	2-20 µg/mL	1 Publication
Immunocytochemistry (ICC/IF)	20 µg/mL	1 Publication
Miscellaneous PubMed (Misc)	-	1 Publication

Product Specific Information

Description: The monoclonal antibody L26 recognizes human CD20, a two transmembrane spanning protein found on precursor and mature B lymphocytes. Expression is lost upon differentiation to plasma cells. The levels of CD20 are critical in evaluating malignant B lymphocytes including Non-Hodgkin's Lymphoma, and Acute B cell, Chronic Lymphocytic and Hairy-Cell Leukemias. CD20 plays a role in B cell differentiation and activation. The structure of the protein shows a small extracellular loop with the carboxy and amino termini in the cytoplasmic compartment. The L26 antibody recognizes an epitope in the cytoplasmic domain and therefore requires permeabilization of the tissue for staining applications. Unlike many anti-CD20 antibodies that recognize the extracellular domain, the epitope recognized by L26 will not be blocked by therapeutic antibodies to CD20, like Rituximab.

Applications Reported: This L26 antibody has been reported for use in immunohistochemical staining of formalin-fixed paraffin embedded tissue sections.

Applications Tested: This L26 antibody has been tested by immunohistochemistry on formalin-fixed paraffin embedded human tonsils using IHC Antigen Retrieval Solution - Low pH (cat. 00-4955).

eFluor® 660 is a replacement for Alexa Fluor® 647. eFluor® 660 emits at 659 nm and is excited with the red laser (633 nm). Please make sure that your instrument is capable of detecting this fluorochrome. This can be used at less than or equal to 20 µg/mL. It is recommended that the antibody be carefully titrated for optimal performance in the assay of interest.

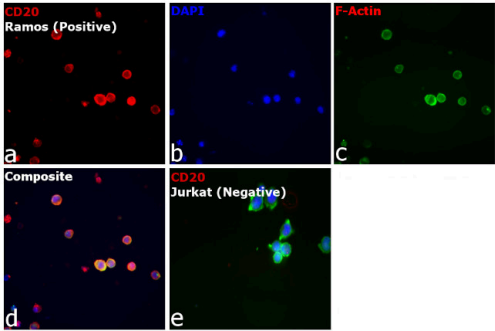
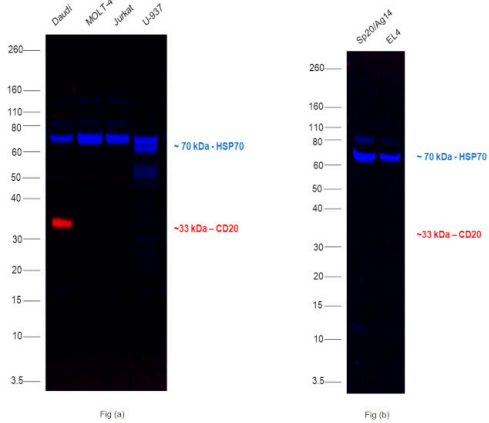
Excitation: 633-647 nm; Emission: 668 nm; Laser: Red Laser.

Filtration: 0.2 µm post-manufacturing filtered.

Product Images For CD20 Monoclonal Antibody (L26), eFluor™ 660, eBioscience™

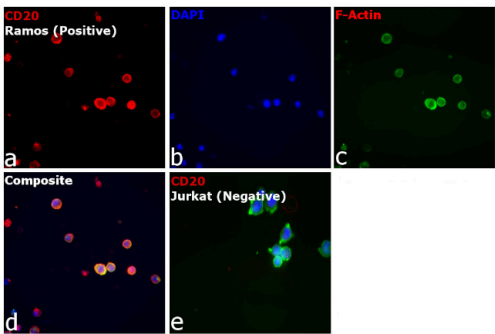
CD20 Antibody (50-0202-80) in WB

Multiplexed fluorescent western blot was performed using Anti-CD20 Monoclonal Antibody (L26), eFluor™ 660, eBioscience™ (Product # 50-0202-82) and a 33 kDa band corresponding to CD20 was observed in Daudi and not in other cell lines. Membrane enriched extracts (30 µg lysate) of human cell lines Daudi (Lane 1), MOLT-4 (Lane 2), Jurkat (Lane 3) and U-937 (Lane 4) as seen in Fig (a), mouse cell lines Sp20/Ag14 (Lane 1) and EL4 (Lane2) as seen in Fig (b) were electrophoresed using NuPAGE™ 4-12% Bis-Tris Protein Gel (Product # NP0322BOX), 12 well. Resolved proteins were then transferred onto a nitrocellulose membrane (Product # IB23001) by iBlot® 2 Dry Blotting System (Product # IB21001). The blots were probed with the primary antibody Anti-CD20 Monoclonal Antibody (L26), eFluor™ 660, eBioscience™ (Product # 50-0202-82, 1 µg/mL) and HSP70 Polyclonal Antibody (Product # PA5-28003, 1:4000 dilution). Donkey anti-Rabbit IgG (H+L) Highly Cross-Adsorbed Secondary Antibody, Alexa Fluor™ Plus 800 (Product # A32808, 1:10000 dilution) secondary antibody was used for detection of HSP70. Fluorescent detection was performed using iBright FL1500 (Product # A44115). Relative expression of CD20 was observed to be high in Daudi in comparison to no expression in MOLT-4, Jurkat and U-937. Mouse reactivity was not observed.



CD20 Antibody (50-0202-80)

Antibody specificity was demonstrated by detection of differential basal expression of the target across cell models owing to their inherent genetic constitution. Immunofluorescence analysis using Anti-CD20 Monoclonal Antibody (L26), eFluor™ 660, eBioscience™ (Product # 50-0202-82) shows expression of desmin in Ramos cells when compared to no expression in Jurkat cells. {RE}



CD20 Antibody (50-0202-80) in ICC/IF

Immunofluorescence analysis of CD20 was performed using Ramos cells. The cells were fixed with 4% paraformaldehyde for 10 minutes, permeabilized with 0.1% Triton™ X-100 for 15 minutes, and blocked with 2% BSA for 1 hour at room temperature. The cells were labeled with CD20 Monoclonal Antibody (L26), eFluor™ 660, eBioscience™ (Product # 50-0202-82) at 5 µg/mL in 0.1% BSA, incubated at 4 degree celsius overnight (Panel a: Red). Nuclei (Panel b: Blue) were stained with Hoechst 33342 (Product # H1399). F-actin (Panel c: Green) was stained with Alexa Fluor™ 488 Phalloidin (Product # A12379, 1:500 dilution). Panel d represents the merged image showing cell membrane localization. Panel e represents MCF7 cells with no expression of CD20. The images were captured at 40X magnification.

View more figures on thermofisher.com

Immunohistochemistry (4)

Frontiers in immunology	Year 2021
<i>In Situ</i> Characterization of Human Lymphoid Tissue Immune Cells by Multispectral Confocal Imaging and Quantitative Image Analysis; Implications for HIV Reservoir Characterization.	
"Published figure using CD20 monoclonal antibody (Product # 50-0202-82) in Immunohistochemistry"	
Authors: Moysi E,Del Rio Estrada PM,Torres-Ruiz F,Reyes-Terán G,Koup RA,Petrovas C	
The Journal of clinical investigation	Year 2018
Accumulation of follicular CD8+ T cells in pathogenic SIV infection.	
"Published figure using CD20 monoclonal antibody (Product # 50-0202-82) in Miscellaneous"	
Authors: Ferrando-Martinez S,Moysi E,Pegu A,Andrews S,Nganou Makamdop K,Ambrozak D,McDermott AB,Palesch D,Paiardini M,Pavlikis GN,Brenchley JM,Douek D,Mascola JR,Petrovas C,Koup RA	

View more IHC references on thermofisher.com

Immunohistochemistry (Paraffin) (1)

Scientific data	Year 2019
Highly multiplexed immunofluorescence images and single-cell data of immune markers in tonsil and lung cancer.	Species Human
"50-0202-82 was used in Immunohistochemistry (Paraffin) sorting to show that this dataset is a valuable resource for biological discovery of the immune system in normal and diseased states as well as for the development of multiplexed image analysis and viewing tools."	
Authors: Rashid R,Gaglia G,Chen YA,Lin JR,Du Z,Maliga Z,Schapiro D,Yapp C,Muhlich J,Sokolov A,Sorger P, Santagata S	

Immunocytochemistry (1)

The Journal of clinical investigation	Year 2018
Accumulation of follicular CD8+ T cells in pathogenic SIV infection.	
"Published figure using CD20 monoclonal antibody (Product # 50-0202-82) in Miscellaneous"	
Authors: Ferrando-Martinez S,Moysi E,Pegu A,Andrews S,Nganou Makamdop K,Ambrozak D,McDermott AB,Palesch D,Paiardini M,Pavlikis GN,Brenchley JM,Douek D,Mascola JR,Petrovas C,Koup RA	

More applications with references on thermofisher.com

Misc (1)

For Research Use Only. Not for use in diagnostic procedures. Not for resale without express authorization. Products are warranted to operate or perform substantially in conformance with published Product specifications in effect at the time of sale, as set forth in the Production documentation, specifications and/or accompanying package inserts ("Documentation"). No claim of suitability for use in applications regulated by FDA is made. The warranty provided herein is valid only when used by properly trained individuals. Unless otherwise stated in the Documentation, this warranty is limited to one year from date of shipment when the Product is subjected to normal, proper and intended usage. This warranty does not extend to anyone other than the Buyer. Any model or sample furnished to Buyer is merely illustrative of the general type and quality of goods and does not represent that any Product will conform to such model or sample. NO OTHER WARRANTIES, EXPRESS OR IMPLIED, ARE GRANTED INCLUDING WITHOUT LIMITATION, IMPLIED WARRANTIES OF MERCHANTABILITY, FITNESS FOR ANY PARTICULAR PURPOSE, OR NON INFRINGEMENT. BUYER'S EXCLUSIVE REMEDY FOR NON-CONFORMING PRODUCTS DURING THE WARRANTY PERIOD IS LIMITED TO REPAIR, REPLACEMENT OF OR REFUND FOR THE NON-CONFORMING PRODUCT(S) AT SELLER'S SOLE OPTION. THERE IS NO OBLIGATION TO REPAIR, REPLACE OR REFUND FOR PRODUCTS AS THE RESULT OF (I) ACCIDENT, DISASTER OR EVENT OF FORCE MAJEURE, (II) MISUSE, FAULT OR NEGLIGENCE OF OR BY BUYER, (III) USE OF THE PRODUCTS IN A MANNER FOR WHICH THEY WERE NOT DESIGNED, OR (IV) IMPROPER STORAGE AND HANDLING OF THE PRODUCTS. Unless otherwise expressly stated on the Product or in the documentation accompanying the Product, the Product is intended for research only and is not to be used for any other purpose, including without limitation, unauthorized commercial uses, in vitro diagnostic uses, ex vivo or in vivo therapeutic uses, or any type of consumption by or application to human or animals.