

CD34 Monoclonal Antibody (RAM34), eFluor 660, eBioscience™

Product Details	
Size	100 µg
Species Reactivity	Mouse
Published Species	Mouse, Human
Host/Isotype	Rat / IgG2a, kappa
Recommended Isotype Control	Rat IgG2a kappa Isotype Control (eBR2a), eFluor 660, eBioscience™
Class	Monoclonal
Type	Antibody
Clone	RAM34
Conjugate	eFluor® 660
Form	Liquid
Concentration	0.2 mg/mL
Purification	Affinity chromatography
Storage buffer	PBS, pH 7.2, with 0.1% gelatin
Contains	0.09% sodium azide
Storage conditions	4° C, store in dark, DO NOT FREEZE!
RRID	AB_10596826

Applications	Tested Dilution	Publications
Immunohistochemistry (Frozen) (IHC (F))	-	4 Publications
Flow Cytometry (Flow)	1 µg/test	40 Publications

Product Specific Information

Description: The RAM34 monoclonal antibody reacts with mouse CD34, also known as mucosialin. It has been reported that the RAM34 antibody can be used to detect CD34+Sca-1+c-Kit+ cells. CD34 is a highly glycosylated (approximately 90-120 kDa) member of the sialomucin family and is expressed by capillary endothelial cells, bone marrow stroma, and a small subpopulation of mouse bone marrow cells. RAM34 has been used to purify mouse hematopoietic stem cells (HSC) to near homogeneity. CD34 expressed on endothelial cells is a ligand for CD62L and plays a role in adhesion. Simultaneous staining of mouse bone marrow cells with a cocktail of antibodies to lineage markers (CD3, CD11b, Ly6G, TER-119 and CD45R/B220) reveals a subset of cells that stain with the RAM34 antibody and express undetectable to low levels of the indicated lineage markers.

Applications Reported: This RAM34 antibody has been reported for use in flow cytometric analysis.

Applications Tested: This RAM34 antibody has been tested by flow cytometric analysis of mouse bone marrow cells. This can be used at less than or equal to 1 µg per test. A test is defined as the amount (µg) of antibody that will stain a cell sample in a final volume of 100 µL. Cell number should be determined empirically but can range from 10⁵ to 10⁸ cells/test. It is recommended that the antibody be carefully titrated for optimal performance in the assay of interest.

Note: When staining with the RAM34 antibody an incubation time of 90 minutes is recommended to obtain the optimal signal to noise ratio.

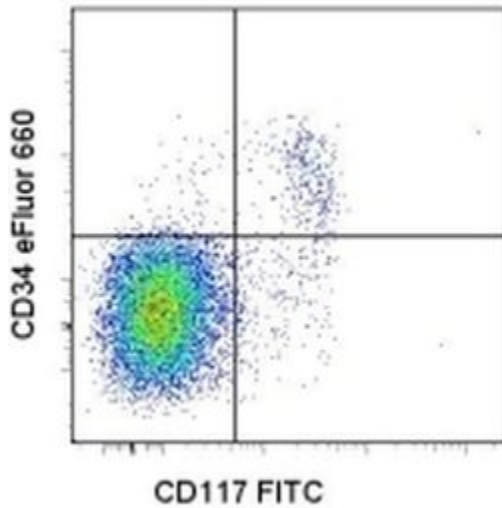
For more detailed information on staining with RAM34, please refer to Ema et al., listed under References.

eFluor® 660 is a replacement for Alexa Fluor® 647. eFluor® 660 emits at 659 nm and is excited with the red laser (633 nm). Please make sure that your instrument is capable of detecting this fluorochrome.

Excitation: 633-647 nm; Emission: 668 nm; Laser: Red Laser.

Filtration: 0.2 µm post-manufacturing filtered.

Product Images For CD34 Monoclonal Antibody (RAM34), eFluor 660, eBioscience™



CD34 Antibody (50-0341-82) in Flow

Staining of BALB/c bone marrow cells with Anti-Mouse CD117 (c-Kit) FITC (Product # 11-1171-82) and 1.0 µg of Anti-Mouse CD34 eFluor® 660. Lineage negative cells using the Mouse Hematopoietic Lineage eFluor® 450 Cocktail (Product # 88-7772-72) were used for analysis.

Immunohistochemistry (Frozen) (4)

American journal of physiology. Lung cellular and molecular physiology

Wt1-expressing progenitors contribute to multiple tissues in the developing lung.

"50-0341 was used in Flow cytometry/Cell sorting to report a novel role for embryonic mesothelium-derived cells in lung morphogenesis."

Authors: Cano E,Carmona R,Muñoz-Chápuli R

Species
Mouse

Dilution
Not Cited

Year
2013

PloS one

Cells derived from the coelomic epithelium contribute to multiple gastrointestinal tissues in mouse embryos.

"50-0341 was used in Immunofluorescence on frozen tissues to investigate the contribution of coelomic epithelium-derived cells to the intestinal development, showing that they contribute to multiple gastrointestinal tissues in mouse embryos."

Authors: Carmona R,Cano E,Mattiotti A,Gaztambide J,Muñoz-Chápuli R

Species
Mouse

Dilution
1:100

Year
2013

[View more IHC \(F\) references on thermofisher.com](#)

Flow Cytometry (40)

Stem cells (Dayton, Ohio)

In $Ly11^{-/-}$ mice, adipose stem cell vascular niche impairment leads to premature development of fat tissues.

"50-0341 was used in Flow cytometry/Cell sorting to highlight the major structural role of the adipose tissue vascular niche in coordinating stem cell self-renewal and differentiation into adipocytes."

Authors: Hussain A,Deleuze V,El Kebriti L,Turali H,Pirot N,Glasson Y,Mathieu D,Pinet V

Species
Mouse

Dilution
Not Cited

Year
2021

Journal of lipid research

Myeloid deletion and therapeutic activation of AMPK do not alter atherosclerosis in male or female mice.

"50-0341 was used in Flow cytometry/Cell sorting to clarify and female mice made acutely atherosclerotic by injection of AAV vector encoding a gain-of-function mutant PCSK9 (PCSK9-AAV) and WD feeding."

Authors: LeBlond ND,Ghorbani P,O'Dwyer C,Ambursley N,Nunes JRC,Smith TKT,Trzaskalski NA,Mulvihill EE,Viollot B,Foretz M,Fullerton MD

Species
Mouse

Dilution
Not Cited

Year
2020

[View more Flow references on thermofisher.com](#)

More applications with references on thermofisher.com

For Research Use Only. Not for use in diagnostic procedures. Not for resale without express authorization. Products are warranted to operate or perform substantially in conformance with published Product specifications in effect at the time of sale, as set forth in the Production documentation, specifications and/or accompanying package inserts ("Documentation"). No claim of suitability for use in applications regulated by FDA is made. The warranty provided herein is valid only when used by properly trained individuals. Unless otherwise stated in the Documentation, this warranty is limited to one year from date of shipment when the Product is subjected to normal, proper and intended usage. This warranty does not extend to anyone other than the Buyer. Any model or sample furnished to Buyer is merely illustrative of the general type and quality of goods and does not represent that any Product will conform to such model or sample. NO OTHER WARRANTIES, EXPRESS OR IMPLIED, ARE GRANTED INCLUDING WITHOUT LIMITATION, IMPLIED WARRANTIES OF MERCHANTABILITY, FITNESS FOR ANY PARTICULAR PURPOSE, OR NON INFRINGEMENT. BUYER'S EXCLUSIVE REMEDY FOR NON-CONFORMING PRODUCTS DURING THE WARRANTY PERIOD IS LIMITED TO REPAIR, REPLACEMENT OF OR REFUND FOR THE NON-CONFORMING PRODUCT(S) AT SELLER'S SOLE OPTION. THERE IS NO OBLIGATION TO REPAIR, REPLACE OR REFUND FOR PRODUCTS AS THE RESULT OF (I) ACCIDENT, DISASTER OR EVENT OF FORCE MAJEURE, (II) MISUSE, FAULT OR NEGLIGENCE OF OR BY BUYER, (III) USE OF THE PRODUCTS IN A MANNER FOR WHICH THEY WERE NOT DESIGNED, OR (IV) IMPROPER STORAGE AND HANDLING OF THE PRODUCTS. Unless otherwise expressly stated on the Product or in the documentation accompanying the Product, the Product is intended for research only and is not to be used for any other purpose, including without limitation, unauthorized commercial uses, in vitro diagnostic uses, ex vivo or in vivo therapeutic uses, or any type of consumption by or application to human or animals.