

# CD160 Monoclonal Antibody (BY55), eFluor™ 660, eBioscience™

## Product Details

Size	100 Tests
Species Reactivity	Human
Host/Isotype	Mouse / IgM
Recommended Isotype Control	Mouse IgM Isotype Control (11E10), eFluor™ 660, eBioscience™
Class	Monoclonal
Type	Antibody
Clone	BY55
Conjugate	eFluor™ 660
Excitation/Emission Max	651/668 nm
Form	Liquid
Concentration	5 µL/Test
Purification	Affinity chromatography
Storage buffer	PBS, pH 7.2, with 0.2% BSA
Contains	0.09% sodium azide
Storage conditions	4° C, store in dark, DO NOT FREEZE!
RRID	AB_2574185

Applications	Tested Dilution	Publications
Flow Cytometry (Flow)	5 µL (0.25 µg)/test	2 Publications

## Product Specific Information

**Description:** This BY55 monoclonal antibody reacts with human CD160, a member of the immunoglobulin superfamily expressed on natural killer cells, natural killer T cells, activated and/or memory CD4 and CD8 T cells, gamma delta T cells, and intraepithelial cells. CD160 has been reported to bind herpes virus entry mediator (HVEM) in a complex with LIGHT and BTLA to deliver an inhibitory signal to CD4 T cells that abrogates proliferation and cytokine production. Three alternative splice variants of CD160 have also been identified in natural killer cells.

**Applications Reported:** This BY55 antibody has been reported for use in flow cytometric analysis.

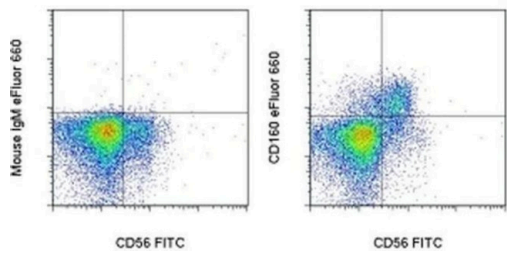
**Applications Tested:** This BY55 antibody has been pre-titrated and tested by flow cytometric analysis of normal human peripheral blood cells. This can be used at 5 µL (0.25 µg) per test. A test is defined as the amount (µg) of antibody that will stain a cell sample in a final volume of 100 µL. Cell number should be determined empirically but can range from 10<sup>5</sup> to 10<sup>8</sup> cells/test.

eFluor® 660 is a replacement for Alexa Fluor® 647. eFluor® 660 emits at 659 nm and is excited with the red laser (633 nm). Please make sure that your instrument is capable of detecting this fluorochoime.

Excitation: 633-647 nm; Emission: 668 nm; Laser: Red Laser.

Filtration: 0.2 µm post-manufacturing filtered.

Product Images For CD160 Monoclonal Antibody (BY55), eFluor™ 660, eBioscience™



**CD160 Antibody (50-1609-42) in Flow**  
Staining of normal human peripheral blood cells with Anti-Human CD56 (NCAM) FITC (Product # 11-0569) and Mouse IgM Isotype Control eFluor® 660 (Product # 50-4752-82) (left) or Anti-Human CD160 eFluor® 660 (right). Cells in the lymphocyte gate were used for analysis.

2 References

Flow Cytometry (2)

<p>Cytometry. Part A : the journal of the International Society for Analytical Cytology</p> <p><b>OMIP-037: 16-color panel to measure inhibitory receptor signatures from multiple human immune cell subsets.</b></p> <p>"Published figure using CD160 monoclonal antibody (Product # 50-1609-42) in Flow Cytometry"</p> <p>Authors: Belkina AC,Snyder-Cappione JE</p>	<p>Year 2017</p>
<p>Gastroenterology</p> <p><b>Liver environment and HCV replication affect human T-cell phenotype and expression of inhibitory receptors.</b></p> <p>"Published figure using CD160 monoclonal antibody (Product # 50-1609-42) in Flow Cytometry"</p> <p>Authors: Kroy DC,Ciuffreda D,Cooperrider JH,Tomlinson M,Hauck GD,Aneja J,Berger C,Wolski D,Carrington M,Wherry EJ,Chung RT,Tanabe KK,Elias N,Freeman GJ,de Kruffyff RH,Misdradjai J,Kim AY,Lauer GM</p>	<p>Year 2014</p>

For Research Use Only. Not for use in diagnostic procedures. Not for resale without express authorization. Products are warranted to operate or perform substantially in conformance with published Product specifications in effect at the time of sale, as set forth in the Production documentation, specifications and/or accompanying package inserts ("Documentation"). No claim of suitability for use in applications regulated by FDA is made. The warranty provided herein is valid only when used by properly trained individuals. Unless otherwise stated in the Documentation, this warranty is limited to one year from date of shipment when the Product is subjected to normal, proper and intended usage. This warranty does not extend to anyone other than the Buyer. Any model or sample furnished to Buyer is merely illustrative of the general type and quality of goods and does not represent that any Product will conform to such model or sample. NO OTHER WARRANTIES, EXPRESS OR IMPLIED, ARE GRANTED INCLUDING WITHOUT LIMITATION, IMPLIED WARRANTIES OF MERCHANTABILITY, FITNESS FOR ANY PARTICULAR PURPOSE, OR NON INFRINGEMENT. BUYER'S EXCLUSIVE REMEDY FOR NON-CONFORMING PRODUCTS DURING THE WARRANTY PERIOD IS LIMITED TO REPAIR, REPLACEMENT OF OR REFUND FOR THE NON-CONFORMING PRODUCT(S) AT SELLER'S SOLE OPTION. THERE IS NO OBLIGATION TO REPAIR, REPLACE OR REFUND FOR PRODUCTS AS THE RESULT OF (I) ACCIDENT, DISASTER OR EVENT OF FORCE MAJEURE, (II) MISUSE, FAULT OR NEGLIGENCE OF OR BY BUYER, (III) USE OF THE PRODUCTS IN A MANNER FOR WHICH THEY WERE NOT DESIGNED, OR (IV) IMPROPER STORAGE AND HANDLING OF THE PRODUCTS. Unless otherwise expressly stated on the Product or in the documentation accompanying the Product, the Product is intended for research only and is not to be used for any other purpose, including without limitation, unauthorized commercial uses, in vitro diagnostic uses, ex vivo or in vivo therapeutic uses, or any type of consumption by or application to human or animals.