

CD363 (S1PR1) Monoclonal Antibody (SW4GYPP), eFluor 660, eBioscience™

Product Details	
Size	100 Tests
Species	Human
Published Species	Human
Expression System	Mouse / IgG1, kappa
Recommended Isotype Control	Mouse IgG1 kappa Isotype Control (P3.6.2.8.1), eFluor 660, eBioscience™
Class	Monoclonal
Type	Antibody
Clone	SW4GYPP
Conjugate	eFluor® 660
Form	Liquid
Concentration	5 µL/Test
Purification	Affinity chromatography
Storage buffer	PBS, pH 7.2, with 0.1% gelatin, 0.2% BSA
Contains	0.09% sodium azide
Storage Conditions	4° C, store in dark, DO NOT FREEZE!
RRID	AB_2574208

Applications	Tested Dilution	Publications
Flow Cytometry (Flow)	5 µL (0.5 µg)/test	2 Publications

Product Specific Information

Description: The SW4GYPP monoclonal antibody recognizes human CD363, also known as sphingosine-1-phosphate receptor 1 (S1PR1, S1P1), or endothelial differentiation G-protein coupled receptor 1 (EDG1). CD363 is a part of a family of five G-protein-coupled receptors that bind sphingosine-1-phosphate (S1P), a lysophospholipid mediator. It has been shown to be primarily expressed by lymphocytes but is also seen on endothelial cells, B cells, NK cells, monocytes/macrophages, neural progenitors, neurons, astrocytes, and oligodendrocytes. CD363 surface expression is dependent on the extracellular concentration of S1P and its signaling is important for lymphocyte egress from secondary lymphoid tissues and the thymus. CD363 plays a key role in many cellular processes like angiogenesis, vascular maturation, endothelial barrier function and trafficking of immune cells. Therapeutic CD363 modulators have been successful in the treatment of relapsing-remitting multiple sclerosis through sequestration of immune cells in secondary lymphoid organs and, therefore, away from sites of inflammation.

Applications Reported: This SW4GYPP antibody has been reported for use in flow cytometric analysis.

Applications Tested: This SW4GYPP antibody has been pre-titrated and tested by flow cytometric analysis of normal human peripheral blood cells. This can be used at 5 µL (0.5 µg) per test. A test is defined as the amount (µg) of antibody that will stain a cell sample in a final volume of 100 µL. Cell number should be determined empirically but can range from 10⁵ to 10⁸ cells/test.

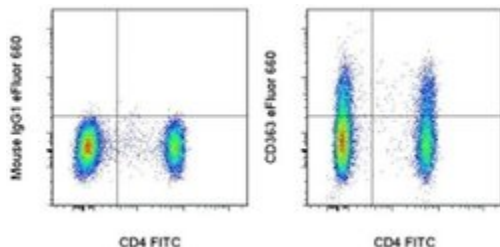
eFluor® 660 is a replacement for Alexa Fluor® 647. eFluor® 660 emits at 659 nm and is excited with the red laser (633 nm).

Please make sure that your instrument is capable of detecting this fluorochrome.

Excitation: 633-647 nm; Emission: 668 nm; Laser: Red Laser.

Filtration: 0.2 µm post-manufacturing filtered.

Product Images For CD363 (S1PR1) Monoclonal Antibody (SW4GYPP), eFluor 660, eBioscience™



CD363 (S1PR1) Antibody (50-3639-42) in Flow

Staining of normal human peripheral blood cells with Anti-Human CD4 FITC (Product # 11-0047-42) and Mouse IgG1 K Isotype Control eFluor® 660 (Product # 50-4714-82) (left) or Anti-Human CD363 (S1PR1) eFluor® 660 (right). Cells in the lymphocyte gate were used for analysis.

2 References

Flow Cytometry (2)

Mucosal immunology

Detection of HIV-1-specific gastrointestinal tissue resident CD8⁺ T-cells in chronic infection.

Authors: Kiniry BE, Li S, Ganesh A, Hunt PW, Somsouk M, Skinner PJ, Deeks SG, Shacklett BL

Species
Human

Dilution
Not Cited

Year
2018

Journal of immunology (Baltimore, Md. : 1950)

Eomeshi NK Cells in Human Liver Are Long-Lived and Do Not Recirculate but Can Be Replenished from the Circulation.

"50-3639 was used in Flow cytometry/Cell sorting to study the molecular signal that characterises an Eomeshi population of natural killer cells in the human liver that is not present in the blood."

Authors: Cuff AO, Robertson FP, Stegmann KA, Pallett LJ, Maini MK, Davidson BR, Male V

Species
Human

Dilution
Not Cited

Year
2016

For Research Use Only. Not for use in diagnostic procedures. Not for resale without express authorization. Products are warranted to operate or perform substantially in conformance with published Product specifications in effect at the time of sale, as set forth in the Production documentation, specifications and/or accompanying package inserts ("Documentation"). No claim of suitability for use in applications regulated by FDA is made. The warranty provided herein is valid only when used by properly trained individuals. Unless otherwise stated in the Documentation, this warranty is limited to one year from date of shipment when the Product is subjected to normal, proper and intended usage. This warranty does not extend to anyone other than the Buyer. Any model or sample furnished to Buyer is merely illustrative of the general type and quality of goods and does not represent that any Product will conform to such model or sample. NO OTHER WARRANTIES, EXPRESS OR IMPLIED, ARE GRANTED INCLUDING WITHOUT LIMITATION, IMPLIED WARRANTIES OF MERCHANTABILITY, FITNESS FOR ANY PARTICULAR PURPOSE, OR NON INFRINGEMENT. BUYER'S EXCLUSIVE REMEDY FOR NON-CONFORMING PRODUCTS DURING THE WARRANTY PERIOD IS LIMITED TO REPAIR, REPLACEMENT OF OR REFUND FOR THE NON-CONFORMING PRODUCT(S) AT SELLER'S SOLE OPTION. THERE IS NO OBLIGATION TO REPAIR, REPLACE OR REFUND FOR PRODUCTS AS THE RESULT OF (I) ACCIDENT, DISASTER OR EVENT OF FORCE MAJEURE, (II) MISUSE, FAULT OR NEGLIGENCE OF OR BY BUYER, (III) USE OF THE PRODUCTS IN A MANNER FOR WHICH THEY WERE NOT DESIGNED, OR (IV) IMPROPER STORAGE AND HANDLING OF THE PRODUCTS. Unless otherwise expressly stated on the Product or in the documentation accompanying the Product, the Product is intended for research only and is not to be used for any other purpose, including without limitation, unauthorized commercial uses, in vitro diagnostic uses, ex vivo or in vivo therapeutic uses, or any type of consumption by or application to human or animals.