

CD326 (EpCAM) Monoclonal Antibody (1B7), eFluor 660, eBioscience™

Product Details	
Size	100 Tests
Species Reactivity	Human
Published Species	Human, Mouse
Host/Isotope	Mouse / IgG1, kappa
Recommended Isotype Control	Mouse IgG1 kappa Isotype Control (P3.6.2.8.1), eFluor 660, eBioscience™
Class	Monoclonal
Type	Antibody
Clone	1B7
Conjugate	eFluor® 660
Form	Liquid
Concentration	5 µL/Test
Purification	Affinity chromatography
Storage buffer	PBS, pH 7.2, with 0.1% gelatin, 0.2% BSA
Contains	0.09% sodium azide
Storage Conditions	4° C, store in dark, DO NOT FREEZE!
RRID	AB_10598658

Applications	Tested	Dilution	Published
Flow Cytometry (Flow)	✓	5 µL (0.06 µg)/test	7 Publications
Immunofluorescence (IF)	-		2 Publications
Immunohistochemistry (IHC)	-		1 Publication

Product Specific Information

Description: EpCAM (Epithelial cell adhesion molecule, CD326, KSA, TROP1) is a 40 kD cell-surface adhesion molecule participating in homophilic, calcium-independent cell-cell interactions. EpCAM is a type-I transmembrane protein, and is expressed primarily on the basolateral surface of most epithelia. Although normal epithelia express low levels of EpCAM, increased expression has been correlated with increased proliferation and progression to a mesenchymal phenotype. EpCAM has also been used as a diagnostic marker on circulating metastatic carcinoma cells, while cancer cells of non-epithelial origin do not express EpCAM.

Applications Reported: This 1B7 antibody has been reported for use in flow cytometric analysis.

Applications Tested: This 1B7 antibody has been pre-titrated and tested by flow cytometric analysis of human A549 cell line. This can be used at 5 µL (0.06 µg) per test. A test is defined as the amount (µg) of antibody that will stain a cell sample in a final volume of 100 µL. Cell number should be determined empirically but can range from 10⁵ to 10⁸ cells/test.

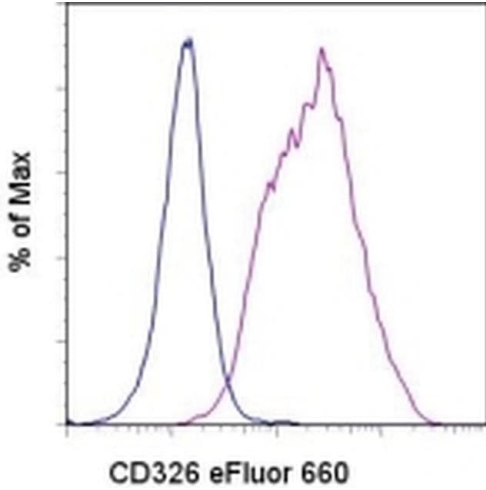
eFluor® 660 is a replacement for Alexa Fluor® 647. eFluor® 660 emits at 659 nm and is excited with the red laser (633 nm).

Please make sure that your instrument is capable of detecting this fluorochrome.

Excitation: 633-647 nm; Emission: 668 nm; Laser: Red Laser.

Filtration: 0.2 µm post-manufacturing filtered.

Product Images For CD326 (EpCAM) Monoclonal Antibody (1B7), eFluor 660, eBioscience™



CD326 (EpCAM) Antibody (50-9326-42) in Flow

Staining of the A549 cell line with Mouse IgG1 K Isotype Control eFluor® 660 (Product # 50-4714-82) (blue histogram) or Anti-Human CD326 (EpCAM) eFluor® 660 (purple histogram). Total viable cells were used for analysis.

[View more figures on thermofisher.com](https://www.thermofisher.com)

10 References

Flow Cytometry (7)

Nature communications

Profiling human breast epithelial cells using single cell RNA sequencing identifies cell diversity.

"50-9326 was used in Flow cytometry/Cell sorting to profile the transcriptomes of 25,790 primary human breast epithelial cells isolated from reduction mammoplasties, using single cell RNA sequencing."

Authors: Nguyen QH,Pervolarakis N,Blake K,Ma D,Davis RT,James N,Phung AT,Willey E,Kumar R,Jabart E,Driver I, Rock J,Goga A,Khan SA,Lawson DA,Werb Z,Kessenbrock K

Species
Human

Dilution
Not Cited

Year
2018

EMBO molecular medicine

TGF-1 secreted by Tregs in lymph nodes promotes breast cancer malignancy via up-regulation of IL-17RB.

"50-9326 was used in Flow cytometry/Cell sorting to investigate the role that regulatory T cells (in tumour-draining lymph nodes) play in modulating the malignancy of breast cancer cells for distant metastasis."

Authors: Huang SC,Wei PC,Hwang-Verslues WW,Kuo WH,Jeng YM,Hu CM,Shew JY,Huang CS,Chang KJ,Lee EY,Lee WH

Species
Human

Dilution
Not Cited

Year
2017

[View more Flow references on thermofisher.com](#)

Immunofluorescence (2)

Stem cell reports

Evidence of In Vitro Preservation of Human Nephrogenesis at the Single-Cell Level.

"Published figure using CD326 (EpCAM) monoclonal antibody (Product # 50-9326-42) in Flow Cytometry"

Authors: Pode-Shakke N,Gershon R,Tam G,Omer D,Gnatek Y,Kanter I,Oriel S,Katz G,Harari-Steinberg O,Kalisky T, Dekel B

Species
Not Applicable

Dilution
Not Cited

Year
2017

International journal of cancer

Clostridium perfringens enterotoxin C-terminal domain labeled to fluorescent dyes for in vivo visualization of micrometastatic chemotherapy-resistant ovarian cancer.

"Published figure using CD326 (EpCAM) monoclonal antibody (Product # 50-9326-42) in Immunofluorescence"

Authors: Cocco E,Shapiro EM,Gasparini S,Lopez S,Schwab CL,Bellone S,Bortolomai I,Sumi NJ,Bonazzoli E,Nicoletti R,Deng Y,Saltzman WM,Zeiss CJ,Centritto F,Black JD,Silas DA,Ratner E,Azodi M,Rutherford TJ,Schwartz PE, Pecorelli S,Santin AD

Species
Not Applicable

Dilution
Not Cited

Year
2015

More applications with references on thermofisher.com

IHC (1)

For Research Use Only. Not for use in diagnostic procedures. Not for resale without express authorization. Products are warranted to operate or perform substantially in conformance with published Product specifications in effect at the time of sale, as set forth in the Production documentation, specifications and/or accompanying package inserts ("Documentation"). No claim of suitability for use in applications regulated by FDA is made. The warranty provided herein is valid only when used by properly trained individuals. Unless otherwise stated in the Documentation, this warranty is limited to one year from date of shipment when the Product is subjected to normal, proper and intended usage. This warranty does not extend to anyone other than the Buyer. Any model or sample furnished to Buyer is merely illustrative of the general type and quality of goods and does not represent that any Product will conform to such model or sample. NO OTHER WARRANTIES, EXPRESS OR IMPLIED, ARE GRANTED INCLUDING WITHOUT LIMITATION, IMPLIED WARRANTIES OF MERCHANTABILITY, FITNESS FOR ANY PARTICULAR PURPOSE, OR NON INFRINGEMENT. BUYER'S EXCLUSIVE REMEDY FOR NON-CONFORMING PRODUCTS DURING THE WARRANTY PERIOD IS LIMITED TO REPAIR, REPLACEMENT OF OR REFUND FOR THE NON-CONFORMING PRODUCT(S) AT SELLER'S SOLE OPTION. THERE IS NO OBLIGATION TO REPAIR, REPLACE OR REFUND FOR PRODUCTS AS THE RESULT OF (I) ACCIDENT, DISASTER OR EVENT OF FORCE MAJEURE, (II) MISUSE, FAULT OR NEGLIGENCE OF OR BY BUYER, (III) USE OF THE PRODUCTS IN A MANNER FOR WHICH THEY WERE NOT DESIGNED, OR (IV) IMPROPER STORAGE AND HANDLING OF THE PRODUCTS. Unless otherwise expressly stated on the Product or in the documentation accompanying the Product, the Product is intended for research only and is not to be used for any other purpose, including without limitation, unauthorized commercial uses, in vitro diagnostic uses, ex vivo or in vivo therapeutic uses, or any type of consumption by or application to human or animals.