

LAMP5 (BAD-LAMP) Monoclonal Antibody (34.2), eFluor 660, eBioscience™

Product Details	
Size	25 µg
Species Reactivity	Human
Host/Isotope	Rat / IgG1, kappa
Recommended Isotype Control	Rat IgG1 kappa Isotype Control (eBRG1), eFluor 660, eBioscience™
Class	Monoclonal
Type	Antibody
Clone	34.2
Conjugate	eFluor® 660
Form	Liquid
Concentration	0.2 mg/mL
Purification	Affinity chromatography
Storage buffer	PBS, pH 7.2, with 0.1% Gelatin
Contains	0.09% Sodium Azide
Storage Conditions	4° C, store in dark, DO NOT FREEZE!
RRID	AB_2574375

Applications	Tested Dilution	Publications
Flow Cytometry (Flow)	0.06 µg/test	1 Publication
Immunocytochemistry (ICC)	20 µg/mL	-
Immunofluorescence (IF)	20 µg/mL	-
Immunohistochemistry (Paraffin) (IHC (P))	20 µg/mL	-

Product Specific Information

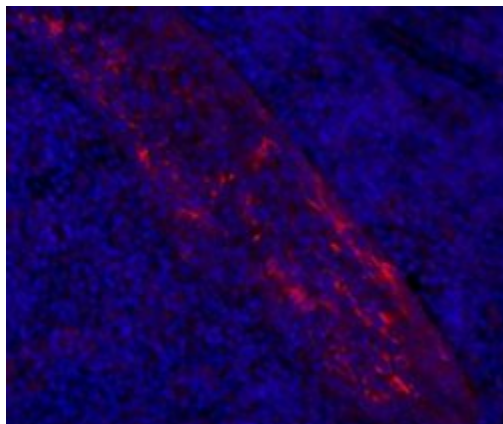
The monoclonal antibody 34.2 recognizes human lysosome-associated membrane protein 5 (LAMP5), a member of the LAMP family. LAMP5 differs from other LAMP family members in that its expression is more restricted and is referred to as brain and dendritic cell-associated LAMP-like molecule (BAD-LAMP). In humans, BAD-LAMP is expressed in post-natal neurons and non-activated plasmacytoid dendritic cells. Expression in neurons is localized to intracellular vesicles distributed in specific microdomains along neurites and may play a role in endocytosis. BAD-LAMP is localized to the endoplasmic reticulum-Golgi intermediate compartment (ERGIC) of plasmacytoid dendritic cells and is lost upon TLR activation.

This 34.2 antibody has been tested by intracellular staining and flow cytometric analysis of normal human peripheral blood cells. This can be used at 0.06 µg per test. A test is defined as the amount (µg) of antibody that will stain a cell sample in a final volume of 100 µL. Cell number should be determined empirically but can range from 105 to 108 cells/test. This 34.2 antibody has been tested by immunohistochemistry of formalin-fixed paraffin embedded human tissue using low or high pH antigen retrieval and can be used at less than or equal to 20 µg/mL. eFluor® 660 is a replacement for Alexa Fluor® 647. eFluor® 660 emits at 659 nm and is

excited with the red laser (633 nm). Please make sure that your instrument is capable of detecting this fluorochrome.

Filtration: 0.2 µm post-manufacturing filtered.

Product Images For LAMP5 (BAD-LAMP) Monoclonal Antibody (34.2), eFluor 660, eBioscience™

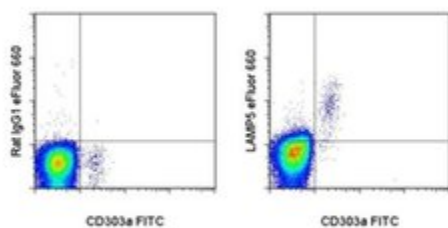


LAMP5 (BAD-LAMP) Antibody (50-9778-80) in IHC (P)

Immunohistochemistry of formalin-fixed paraffin embedded human tonsil using 20 µg/mL of Anti-Human LAMP5 (BAD-LAMP) eFluor® 660. Nuclei are stained with DAPI.

LAMP5 (BAD-LAMP) Antibody (50-9778-80) in Flow

Staining of normal human peripheral blood cells with Anti-Human CD303a FITC (Product # 11-9818-42) and Rat IgG1 K Isotype Control eFluor® 660 (Product # 50-4301-82) (left) or Anti-Human LAMP5 (BAD-LAMP) eFluor® 660 (center). Total viable cells were used for analysis.



[View more figures on thermofisher.com](#)

1 Reference

Flow Cytometry (1)

Nature communications

BAD-LAMP controls TLR9 trafficking and signalling in human plasmacytoid dendritic cells.

"Published figure using LAMP5 (BAD-LAMP) monoclonal antibody (Product # 50-9778-82) in Flow Cytometry"

Authors: Combes A, Camosseto V, N'Guessan P, Argüello RJ, Mussard J, Caux C, Bendriss-Vermare N, Pierre P, Gatti E

Species
Not Applicable

Dilution
Not Cited

Year
2017

For Research Use Only. Not for use in diagnostic procedures. Not for resale without express authorization. Products are warranted to operate or perform substantially in conformance with published Product specifications in effect at the time of sale, as set forth in the Production documentation, specifications and/or accompanying package inserts ("Documentation"). No claim of suitability for use in applications regulated by FDA is made. The warranty provided herein is valid only when used by properly trained individuals. Unless otherwise stated in the Documentation, this warranty is limited to one year from date of shipment when the Product is subjected to normal, proper and intended usage. This warranty does not extend to anyone other than the Buyer. Any model or sample furnished to Buyer is merely illustrative of the general type and quality of goods and does not represent that any Product will conform to such model or sample. NO OTHER WARRANTIES, EXPRESS OR IMPLIED, ARE GRANTED INCLUDING WITHOUT LIMITATION, IMPLIED WARRANTIES OF MERCHANTABILITY, FITNESS FOR ANY PARTICULAR PURPOSE, OR NON INFRINGEMENT. BUYER'S EXCLUSIVE REMEDY FOR NON-CONFORMING PRODUCTS DURING THE WARRANTY PERIOD IS LIMITED TO REPAIR, REPLACEMENT OF OR REFUND FOR THE NON-CONFORMING PRODUCT(S) AT SELLER'S SOLE OPTION. THERE IS NO OBLIGATION TO REPAIR, REPLACE OR REFUND FOR PRODUCTS AS THE RESULT OF (I) ACCIDENT, DISASTER OR EVENT OF FORCE MAJEURE, (II) MISUSE, FAULT OR NEGLIGENCE OF OR BY BUYER, (III) USE OF THE PRODUCTS IN A MANNER FOR WHICH THEY WERE NOT DESIGNED, OR (IV) IMPROPER STORAGE AND HANDLING OF THE PRODUCTS. Unless otherwise expressly stated on the Product or in the documentation accompanying the Product, the Product is intended for research only and is not to be used for any other purpose, including without limitation, unauthorized commercial uses, in vitro diagnostic uses, ex vivo or in vivo therapeutic uses, or any type of consumption by or application to human or animals.