

TRAIL (soluble) Polyclonal Antibody, PeproTech®

Product Details

Size	1 mg
Species Reactivity	Human
Published Species	Rat, Human
Host/Isotype	Rabbit
Class	Polyclonal
Type	Antibody
Conjugate	Unconjugated
Immunogen	E.coli-derived Recombinant Human sTRAIL/Apo2L
Form	Lyophilized
Concentration	0.1-1.0 mg/mL
Purification	Antigen affinity chromatography
Storage buffer	PBS
Contains	no preservative
Storage conditions	-20°C

Applications	Tested Dilution	Publications
Western Blot (WB)	0.1-0.2 µg/mL	5 Publications
ELISA (ELISA)	0.5-2.0 µg/mL	3 Publications
Immunoprecipitation (IP)	-	1 Publication
In vitro Assay (IV)	-	2 Publications

Product Specific Information

AA Sequence of recombinant protein: MRERGPQRVA AHITGTRGRS NTLSSPNSKN EKALGRKINS WESSRSGHSF LSNLHLRNGE LVIHEKGFYY IYSQTYFRFQ EEIKENTKND QQMVGQYIYKY TSYPDPILLM KSARNSCWSK DAEYGLYSIY QGGIFELKEN DRIFVSVTNE HLIDMDHEAS FFGAFLVG.

Preparation: Produced from sera of rabbits immunized with highly pure Recombinant Human sTRAIL/Apo2L. Anti-Human sTRAIL/Apo2L-specific antibody was purified by affinity chromatography employing an immobilized Human sTRAIL/Apo2L matrix.

Sandwich ELISA: To detect Human sTRAIL/Apo2L by sandwich ELISA (using 100 µL/well antibody solution) a concentration of 0.5-2.0 µg/mL of this antibody is required. This antigen affinity purified antibody, in conjunction with PeproTech Biotinylated Anti-Human sTRAIL/Apo2L (500-P135Bt) as a detection antibody, allows the detection of at least 0.2-0.4 ng/well of Recombinant Human sTRAIL/Apo2L.

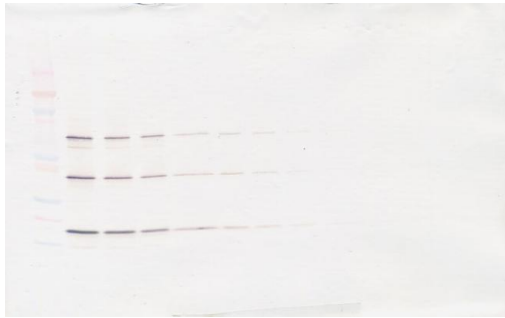
Western Blot: To detect Human sTRAIL/Apo2L by Western Blot analysis this antibody can be used at a concentration of 0.1-0.2 µg/mL. Used in conjunction with compatible secondary reagents the detection limit for Recombinant Human sTRAIL/Apo2L is 1.5-3.0 ng/lane, under either reducing or non-reducing conditions.

Product Images For TRAIL (soluble) Polyclonal Antibody, PeproTech®



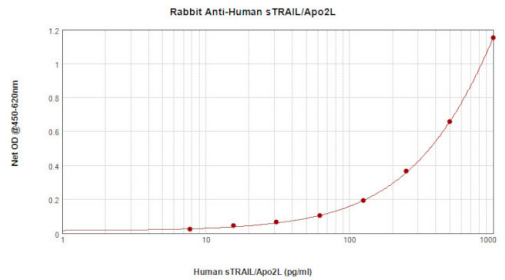
TRAIL (soluble) Antibody (500-P135-1MG) in WB

Western Blot: To detect Human sTRAIL/Apo2L by Western Blot analysis TRAIL (soluble) Polyclonal Antibody (Product # 500-P135-1MG) can be used at a concentration of 0.1-0.2 µg/mL. Used in conjunction with compatible secondary reagents the detection limit for Recombinant Human sTRAIL/Apo2L is 1.5-3.0 ng /lane, under either reducing or non-reducing conditions.



TRAIL (soluble) Antibody (500-P135-1MG) in WB

Western Blot: To detect Human sTRAIL/Apo2L by Western Blot analysis TRAIL (soluble) Polyclonal Antibody (Product # 500-P135-1MG) can be used at a concentration of 0.1-0.2 µg/mL. Used in conjunction with compatible secondary reagents the detection limit for Recombinant Human sTRAIL/Apo2L is 1.5-3.0 ng /lane, under either reducing or non-reducing conditions.



TRAIL (soluble) Antibody (500-P135-1MG) in ELISA

Sandwich ELISA: To detect Human sTRAIL/Apo2L by sandwich ELISA (using 100 µL/well antibody solution) a concentration of 0.5-2.0 µg/mL of TRAIL (soluble) Polyclonal Antibody (Product # 500-P135-1MG) is required. This antigen affinity purified antibody, in conjunction with PeproTech TRAIL (soluble) Polyclonal Antibody, Biotin (Product # 500-P135BT-1MG) as a detection antibody, allows the detection of at least 0.2-0.4 ng/well of Recombinant Human sTRAIL/Apo2L.

Western Blot (5)

<p>Scientific reports</p> <p>Soluble TRAIL Armed Human MSC As Gene Therapy For Pancreatic Cancer.</p> <p>Authors: Spano C,Grisendi G,Golinelli G,Rossignoli F,Prapa M,Bestagno M,Candini O,Petrachi T,Recchia A,Miselli F, Rovesi G,Orsi G,Maiorana A,Manni P,Veronesi E,Piccinno MS,Murgia A,Pinelli M,Horwitz EM,Cascinu S,Conte P, Dominici M</p>	<p>Year 2019</p> <p>Species Human</p>
<p>Scientific reports</p> <p>Membrane-proximal TRAIL species are incapable of inducing short circuit apoptosis signaling: Implications for drug development and basic cytokine biology.</p> <p>Authors: Tatzel K,Kuroki L,Dmitriev I,Kashentseva E,Curiel DT,Goedegebuure SP,Powell MA,Mutch DG,Hawkins WG, Spitzer D</p>	<p>Year 2016</p>

[View more WB references on thermofisher.com](#)

ELISA (3)

<p>PloS one</p> <p>Possible novel therapy for malignant gliomas with secretable trimeric TRAIL.</p> <p>Authors: Jeong M,Kwon YS,Park SH,Kim CY,Jeun SS,Song KW,Ko Y,Robbins PD,Billiar TR,Kim BM,Seol DW</p>	<p>Year 2009</p> <p>Species Rat</p>
<p>Gene therapy</p> <p>Cancer gene therapy using a novel secretable trimeric TRAIL.</p> <p>Authors: Kim CY,Jeong M,Mushiake H,Kim BM,Kim WB,Ko JP,Kim MH,Kim M,Kim TH,Robbins PD,Billiar TR,Seol DW</p>	<p>Year 2006</p> <p>Species Human</p>

[View more ELISA references on thermofisher.com](#)

More applications with references on thermofisher.com

- IP (1)
- IV (2)

For Research Use Only. Not for use in diagnostic procedures. Not for resale without express authorization. Products are warranted to operate or perform substantially in conformance with published Product specifications in effect at the time of sale, as set forth in the Production documentation, specifications and/or accompanying package inserts ("Documentation"). No claim of suitability for use in applications regulated by FDA is made. The warranty provided herein is valid only when used by properly trained individuals. Unless otherwise stated in the Documentation, this warranty is limited to one year from date of shipment when the Product is subjected to normal, proper and intended usage. This warranty does not extend to anyone other than the Buyer. Any model or sample furnished to Buyer is merely illustrative of the general type and quality of goods and does not represent that any Product will conform to such model or sample. NO OTHER WARRANTIES, EXPRESS OR IMPLIED, ARE GRANTED INCLUDING WITHOUT LIMITATION, IMPLIED WARRANTIES OF MERCHANTABILITY, FITNESS FOR ANY PARTICULAR PURPOSE, OR NON INFRINGEMENT. BUYER'S EXCLUSIVE REMEDY FOR NON-CONFORMING PRODUCTS DURING THE WARRANTY PERIOD IS LIMITED TO REPAIR, REPLACEMENT OF OR REFUND FOR THE NON-CONFORMING PRODUCT(S) AT SELLER'S SOLE OPTION. THERE IS NO OBLIGATION TO REPAIR, REPLACE OR REFUND FOR PRODUCTS AS THE RESULT OF (i) ACCIDENT, DISASTER OR EVENT OF FORCE MAJEURE, (ii) MISUSE, FAULT OR NEGLIGENCE OF OR BY BUYER, (iii) USE OF THE PRODUCTS IN A MANNER FOR WHICH THEY WERE NOT DESIGNED, OR (iv) IMPROPER STORAGE AND HANDLING OF THE PRODUCTS. Unless otherwise expressly stated on the Product or in the documentation accompanying the Product, the Product is intended for research only and is not to be used for any other purpose, including without limitation, unauthorized commercial uses, in vitro diagnostic uses, ex vivo or in vivo therapeutic uses, or any type of consumption by or application to human or animals.