

# IL-6 Polyclonal Antibody, PeproTech®

## Product Details

Size	1 mg
Species Reactivity	Human
Published Species	Human, Mouse
Host/Isotype	Rabbit
Class	Polyclonal
Type	Antibody
Conjugate	Unconjugated
Immunogen	E.coli-derived Recombinant Human IL-6
Form	Lyophilized
Concentration	0.1-1.0 mg/mL
Purification	Antigen affinity chromatography
Storage buffer	PBS
Contains	no preservative
Storage conditions	-20°C

Applications	Tested Dilution	Publications
Western Blot (WB)	0.1-0.2 µg/mL	-
ELISA (ELISA)	0.5-2.0 µg/mL	1 Publication
Neutralization (Neu)	-	4 Publications
In vitro Assay (IV)	-	5 Publications
Immunostaining (IS)	-	1 Publication

## Product Specific Information

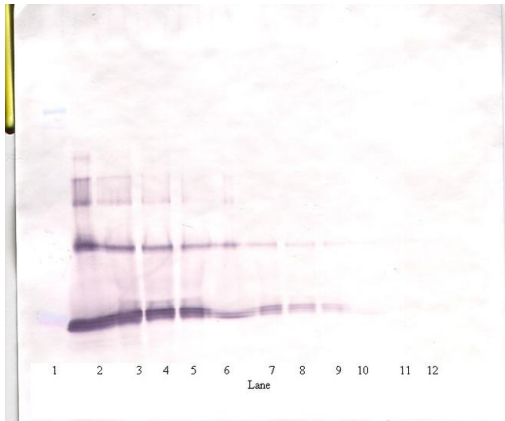
AA Sequence of recombinant protein: PVPPGEDSKD VAAPHRQPLT SSERIDKQIR YILDGISALR KETCNKSNMC ESSKEALAEN NLNLPKMAEK DGCFSQSGFNE ETCLVKIITG LLEFEVYLEY LQNRFESEEE QARAVQMSTK VLIQFLQKKA KNLDAITTPD PTTNASLLTK LQAQNQWLQD MTTHLILRSF KEFLQSSLRA LRQM.

Preparation: Produced from sera of rabbits immunized with highly pure Recombinant Human IL-6. Anti-Human IL-6-specific antibody was purified by affinity chromatography employing an immobilized Human IL-6 matrix.

Sandwich ELISA: To detect Human IL-6 by sandwich ELISA (using 100 µL/well antibody solution) a concentration of 0.5-2.0 µg/mL of this antibody is required. This antigen affinity purified antibody, in conjunction with PeproTech Biotinylated Anti-Human IL-6 (500-P26Bt) as a detection antibody, allows the detection of at least 0.2-0.4 ng/well of Recombinant Human IL-6.

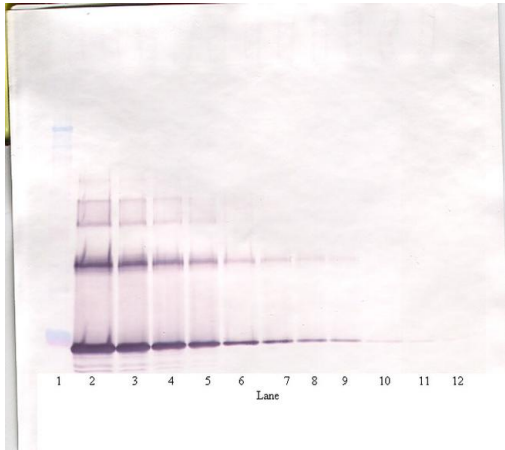
Western Blot: To detect Human IL-6 by Western Blot analysis this antibody can be used at a concentration of 0.1-0.2 µg/mL. When used in conjunction with compatible secondary reagents, the detection limit for Recombinant Human IL-6 is 1.5-3.0 ng/lane, under either reducing or non-reducing conditions.

Product Images For IL-6 Polyclonal Antibody, PeproTech®



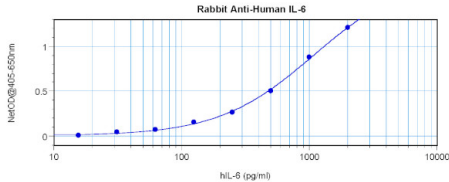
**IL-6 Antibody (500-P26-1MG) in WB**

Western Blot: To detect Human IL-6 by Western Blot analysis IL-6 Polyclonal Antibody (Product # 500-P26-1MG) can be used at a concentration of 0.1-0.2 µg /mL. When used in conjunction with compatible secondary reagents, the detection limit for Recombinant Human IL-6 is 1.5-3.0 ng/lane, under either reducing or non-reducing conditions.



**IL-6 Antibody (500-P26-1MG) in WB**

Western Blot: To detect Human IL-6 by Western Blot analysis IL-6 Polyclonal Antibody (Product # 500-P26-1MG) can be used at a concentration of 0.1-0.2 µg /mL. When used in conjunction with compatible secondary reagents, the detection limit for Recombinant Human IL-6 is 1.5-3.0 ng/lane, under either reducing or non-reducing conditions.



**IL-6 Antibody (500-P26-1MG) in ELISA**

Sandwich ELISA: To detect Human IL-6 by sandwich ELISA (using 100 µL/well antibody solution) a concentration of 0.5-2.0 µg/mL of IL-6 Polyclonal Antibody (Product # 500-P26-1MG) is required. This antigen affinity purified antibody, in conjunction with PeproTech IL-6 Polyclonal Antibody, Biotin (Product # 500-P26BT-1MG) as a detection antibody, allows the detection of at least 0.2-0.4 ng /well of Recombinant Human IL-6.

ELISA (1)

Cell	Year 2020
<b>Imbalanced Host Response to SARS-CoV-2 Drives Development of COVID-19.</b>	Species Human
Authors: Blanco-Melo D,Nilsson-Payant BE,Liu WC,Uhl S,Hoagland D,Møller R,Jordan TX,Oishi K,Panis M,Sachs D,Wang TT,Schwartz RE,Lim JK,Albrecht RA,tenOever BR	

Neutralization (4)

The Journal of cell biology	Year 2009
<b>Regulation of epithelial-mesenchymal IL-1 signaling by PPARbeta/delta is essential for skin homeostasis and wound healing.</b>	Species Human
Authors: Chong HC,Tan MJ,Philippe V,Tan SH,Tan CK,Ku CW,Goh YY,Wahli W,Michalik L,Tan NS	
Stem cells (Dayton, Ohio)	Year 2008
<b>Human mesenchymal stem cells inhibit neutrophil apoptosis: a model for neutrophil preservation in the bone marrow niche.</b>	Species Human
Authors: Raffaghello L,Bianchi G,Bertolotto M,Montecucco F,Busca A,Dallegrì F,Ottonello L,Pistoia V	

[View more Neu references on thermofisher.com](#)

In vitro Assay (5)

Cell death & disease	Year 2019
<b>Cancer-associated fibroblasts enhance tumor-associated macrophages enrichment and suppress NK cells function in colorectal cancer.</b>	Species Human Mouse
Authors: Zhang R,Qi F,Zhao F,Li G,Shao S,Zhang X,Yuan L,Feng Y	

[View more IV references on thermofisher.com](#)

More applications with references on thermofisher.com

IS (1)

For Research Use Only. Not for use in diagnostic procedures. Not for resale without express authorization. Products are warranted to operate or perform substantially in conformance with published Product specifications in effect at the time of sale, as set forth in the Production documentation, specifications and/or accompanying package inserts ("Documentation"). No claim of suitability for use in applications regulated by FDA is made. The warranty provided herein is valid only when used by properly trained individuals. Unless otherwise stated in the Documentation, this warranty is limited to one year from date of shipment when the Product is subjected to normal, proper and intended usage. This warranty does not extend to anyone other than the Buyer. Any model or sample furnished to Buyer is merely illustrative of the general type and quality of goods and does not represent that any Product will conform to such model or sample. NO OTHER WARRANTIES, EXPRESS OR IMPLIED, ARE GRANTED INCLUDING WITHOUT LIMITATION, IMPLIED WARRANTIES OF MERCHANTABILITY, FITNESS FOR ANY PARTICULAR PURPOSE, OR NON INFRINGEMENT. BUYER'S EXCLUSIVE REMEDY FOR NON-CONFORMING PRODUCTS DURING THE WARRANTY PERIOD IS LIMITED TO REPAIR, REPLACEMENT OF OR REFUND FOR THE NON-CONFORMING PRODUCT(S) AT SELLER'S SOLE OPTION. THERE IS NO OBLIGATION TO REPAIR, REPLACE OR REFUND FOR PRODUCTS AS THE RESULT OF (I) ACCIDENT, DISASTER OR EVENT OF FORCE MAJEURE, (II) MISUSE, FAULT OR NEGLIGENCE OF OR BY BUYER, (III) USE OF THE PRODUCTS IN A MANNER FOR WHICH THEY WERE NOT DESIGNED, OR (IV) IMPROPER STORAGE AND HANDLING OF THE PRODUCTS. Unless otherwise expressly stated on the Product or in the documentation accompanying the Product, the Product is intended for research only and is not to be used for any other purpose, including without limitation, unauthorized commercial uses, in vitro diagnostic uses, ex vivo or in vivo therapeutic uses, or any type of consumption by or application to human or animals.