

TRAIL Polyclonal Antibody, PeproTech®

Product Details	
Size	1 mg
Species Reactivity	Mouse
Published Species	Human
Host/Isotype	Rabbit
Class	Polyclonal
Type	Antibody
Conjugate	Unconjugated
Immunogen	E.coli-derived Recombinant Murine TRAIL
Form	Lyophilized
Concentration	0.1-1.0 mg/mL
Purification	Antigen affinity chromatography
Storage buffer	PBS
Contains	no preservative
Storage conditions	-20°C

Applications	Tested Dilution	Publications
Western Blot (WB)	0.1-0.2 µg/mL	1 Publication
ELISA (ELISA)	0.5-2.0 µg/mL	-

Product Specific Information

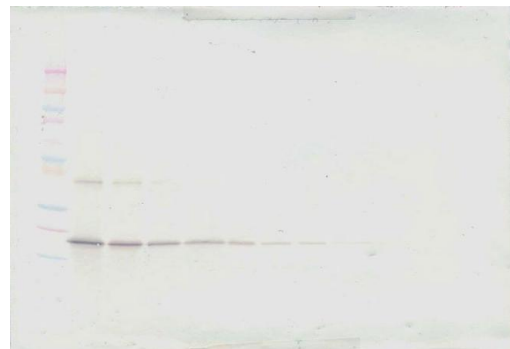
AA Sequence of recombinant protein: MRGGRPQKVA AHITGITRRS NSALIPISKD GKTLGQKIES WESSRKGHSF LNHVLFNRNGE LVIEQEGLYY IYSQTYFRFQ EAEDASKMVS KDKVVRTKQLV QYIYKYTSYP DPIVLMKSAR NSCWSRDAEY GLYSIQGGGL FELKKNDRIF VSVTNEHLMD LDQEASFFGA FLIN.

Preparation: Produced from sera of rabbits immunized with highly pure Recombinant Murine TRAIL. Anti-Murine TRAIL-specific antibody was purified by affinity chromatography employing an immobilized Murine TRAIL matrix.

Sandwich ELISA: To detect Murine TRAIL by sandwich ELISA (using 100 µL/well antibody solution) a concentration of 0.5-2.0 µg/mL of this antibody is required. This antigen affinity purified antibody, in conjunction with PeproTech Biotinylated Anti-Murine TRAIL (500-P303Bt) as a detection antibody, allows the detection of at least 0.2-0.4 ng/well of Recombinant Murine TRAIL.

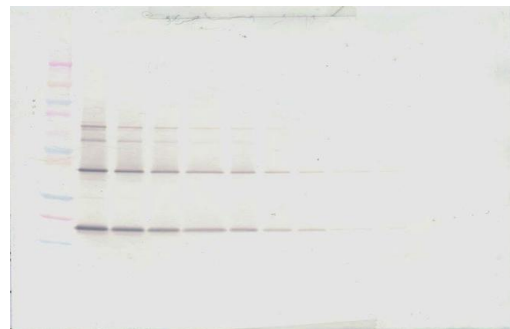
Western Blot: To detect Murine TRAIL by Western Blot analysis this antibody can be used at a concentration of 0.1-0.2 µg/mL. When used in conjunction with compatible secondary reagents, the detection limit for Recombinant Murine TRAIL is 1.5-3.0 ng /lane, under either reducing or non-reducing conditions.

Product Images For TRAIL Polyclonal Antibody, PeproTech®



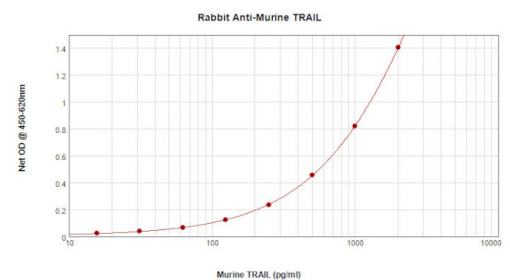
TRAIL Antibody (500-P303-1MG) in WB

Western Blot: To detect Murine TRAIL by Western Blot analysis TRAIL Polyclonal Antibody (Product # 500-P303-1MG) can be used at a concentration of 0.1-0.2 µg/mL. When used in conjunction with compatible secondary reagents, the detection limit for Recombinant Murine TRAIL is 1.5-3.0 ng/lane, under either reducing or non-reducing conditions.



TRAIL Antibody (500-P303-1MG) in WB

Western Blot: To detect Murine TRAIL by Western Blot analysis TRAIL Polyclonal Antibody (Product # 500-P303-1MG) can be used at a concentration of 0.1-0.2 µg/mL. When used in conjunction with compatible secondary reagents, the detection limit for Recombinant Murine TRAIL is 1.5-3.0 ng/lane, under either reducing or non-reducing conditions.



TRAIL Antibody (500-P303-1MG) in ELISA

Sandwich ELISA: To detect Murine TRAIL by sandwich ELISA (using 100 µL/well antibody solution) a concentration of 0.5-2.0 µg/mL of TRAIL Polyclonal Antibody (Product # 500-P303-1MG) is required. This antigen affinity purified antibody, in conjunction with PeproTech TRAIL Polyclonal Antibody, Biotin (Product # 500-P303BT-1MG) as a detection antibody, allows the detection of at least 0.2-0.4 ng /well of Recombinant Murine TRAIL.

1 Reference

Western Blot (1)

<p>Stem cells (Dayton, Ohio)</p> <p>Mesenchymal progenitors expressing TRAIL induce apoptosis in sarcomas.</p> <p>Authors: Grisendi G, Spano C, D'souza N, Rasini V, Veronesi E, Prapa M, Petrachi T, Piccinno S, Rossignoli F, Burns JS, Fiorcari S, Granchi D, Baldini N, Horwitz EM, Guarneri V, Conte P, Paolucci P, Dominici M</p>	<p>Year 2015</p> <p>Species Human</p>
--	---

For Research Use Only. Not for use in diagnostic procedures. Not for resale without express authorization. Products are warranted to operate or perform substantially in conformance with published Product specifications in effect at the time of sale, as set forth in the Production documentation, specifications and/or accompanying package inserts ("Documentation"). No claim of suitability for use in applications regulated by FDA is made. The warranty provided herein is valid only when used by properly trained individuals. Unless otherwise stated in the Documentation, this warranty is limited to one year from date of shipment when the Product is subjected to normal, proper and intended usage. This warranty does not extend to anyone other than the Buyer. Any model or sample furnished to Buyer is merely illustrative of the general type and quality of goods and does not represent that any Product will conform to such model or sample. NO OTHER WARRANTIES, EXPRESS OR IMPLIED, ARE GRANTED INCLUDING WITHOUT LIMITATION, IMPLIED WARRANTIES OF MERCHANTABILITY, FITNESS FOR ANY PARTICULAR PURPOSE, OR NON-INFRINGEMENT. BUYER'S EXCLUSIVE REMEDY FOR NON-CONFORMING PRODUCTS DURING THE WARRANTY PERIOD IS LIMITED TO REPAIR, REPLACEMENT OF OR REFUND FOR THE NON-CONFORMING PRODUCT(S) AT SELLER'S SOLE OPTION. THERE IS NO OBLIGATION TO REPAIR, REPLACE OR REFUND FOR PRODUCTS AS THE RESULT OF (I) ACCIDENT, DISASTER OR EVENT OF FORCE MAJEURE, (II) MISUSE, FAULT OR NEGLIGENCE OF OR BY BUYER, (III) USE OF THE PRODUCTS IN A MANNER FOR WHICH THEY WERE NOT DESIGNED, OR (IV) IMPROPER STORAGE AND HANDLING OF THE PRODUCTS. Unless otherwise expressly stated on the Product or in the documentation accompanying the Product, the Product is intended for research only and is not to be used for any other purpose, including without limitation, unauthorized commercial uses, in vitro diagnostic uses, ex vivo or in vivo therapeutic uses, or any type of consumption by or application to human or animals.