

IL-10 Polyclonal Antibody, PeproTech®

Product Details

Size	1 mg
Species Reactivity	Mouse
Published Species	Mouse
Host/Isotype	Rabbit
Class	Polyclonal
Type	Antibody
Conjugate	Unconjugated
Immunogen	E.coli-derived Recombinant Murine IL-10
Form	Lyophilized
Concentration	0.1-1.0 mg/mL
Purification	Antigen affinity chromatography
Storage buffer	PBS
Contains	no preservative
Storage conditions	-20°C

Applications	Tested Dilution	Publications
Western Blot (WB)	0.1-0.2 µg/mL	-
Immunohistochemistry (IHC)	-	1 Publication
ELISA (ELISA)	0.5-2.0 µg/mL	3 Publications
Neutralization (Neu)	-	2 Publications
In vitro Assay (IV)	-	1 Publication
Miscellaneous PubMed (Misc)	-	1 Publication
Immunostaining (IS)	-	3 Publications

Product Specific Information

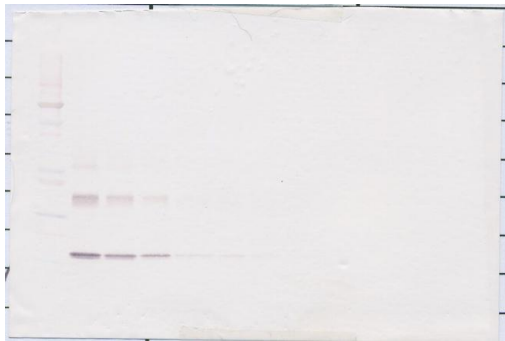
AA Sequence of recombinant protein: MSRGQYSRED NNCTHFPVGQ SHMLLELRTA FSQVKTFQTT KDQLDNILLT DSLMQDFKGY LGCQALSEMI QFYLVVEVMPQ AEKHGPEIKE HLNSLGQKLK TLRMLRRCH RFLPCENKSK AVEQVKSDFN KLEDQGVYKA MNEFDIFINC IEAYMMIKMK S.

Preparation: Produced from sera of rabbits immunized with highly pure Recombinant Murine IL-10. Anti-Murine IL-10-specific antibody was purified by affinity chromatography employing an immobilized Murine IL-10 matrix.

Sandwich ELISA: To detect Murine IL-10 by sandwich ELISA (using 100 µL/well antibody solution) a concentration of 0.5-2.0 µg/mL of this antibody is required. This antigen affinity purified antibody, in conjunction with PeproTech Biotinylated Anti-Murine IL-10 (500-P60Bt) as a detection antibody, allows the detection of at least 0.2-0.4 ng/well of Recombinant Murine IL-10.

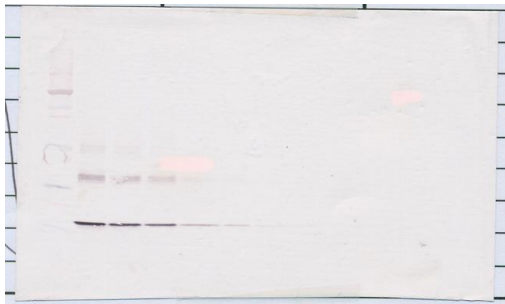
Western Blot: To detect Murine IL-10 by Western Blot analysis this antibody can be used at a concentration of 0.1-0.2 µg/mL. Used in conjunction with compatible secondary reagents the detection limit for Recombinant Murine IL-10 is 1.5-3.0 ng/lane, under either reducing or non-reducing conditions.

Product Images For IL-10 Polyclonal Antibody, PeproTech®



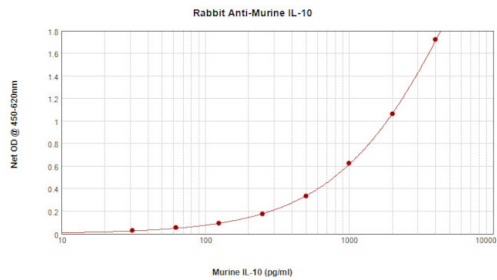
IL-10 Antibody (500-P60-1MG) in WB

Western Blot: To detect Murine IL-10 by Western Blot analysis IL-10 Polyclonal Antibody (Product # 500-P60-1MG) can be used at a concentration of 0.1-0.2 µg /mL. Used in conjunction with compatible secondary reagents the detection limit for Recombinant Murine IL-10 is 1.5-3.0 ng/lane, under either reducing or non-reducing conditions.



IL-10 Antibody (500-P60-1MG) in WB

Western Blot: To detect Murine IL-10 by Western Blot analysis IL-10 Polyclonal Antibody (Product # 500-P60-1MG) can be used at a concentration of 0.1-0.2 µg /mL. Used in conjunction with compatible secondary reagents the detection limit for Recombinant Murine IL-10 is 1.5-3.0 ng/lane, under either reducing or non-reducing conditions.



IL-10 Antibody (500-P60-1MG) in ELISA

Sandwich ELISA: To detect Murine IL-10 by sandwich ELISA (using 100 µL/well antibody solution) a concentration of 0.5-2.0 µg/mL of IL-10 Polyclonal Antibody (Product # 500-P60-1MG) is required. This antigen affinity purified antibody, in conjunction with PeproTech IL-10 Polyclonal Antibody, Biotin (Product # 500-P60BT-1MG) as a detection antibody, allows the detection of at least 0.2-0.4 ng /well of Recombinant Murine IL-10.

Immunohistochemistry (1)

<p>Breast cancer research : BCR</p> <p>Effects of milk fermented by <i>Lactobacillus helveticus</i> R389 on a murine breast cancer model.</p> <p>"500-P60 was used in Immunohistochemistry to conclude that the milk fermented by <i>L. helveticus</i> R389 was able to modulate the relationship between immune and endocrine systems (by IL-6 diminution), which is very important in oestrogen-dependent tumour and induced cellular apoptosis."</p> <p>Authors: de Moreno de LeBlanc A,Matar C,LeBlanc N,Perdigón G</p>	<p>Year 2006</p> <p>Species Mouse</p>
--	---

ELISA (3)

<p>Frontiers in oncology</p> <p>Potential Novel Risk Factor for Breast Cancer: <i>Toxocara canis</i> Infection Increases Tumor Size Due to Modulation of the Tumor Immune Microenvironment.</p> <p>"500-P60 was used in Enzyme-linked immunosorbent assay to study whether <i>T. canis</i> infection alters mammary tumor growth through modulation of the immune response to show that <i>T. canis</i> infection enhances tumor development and suggests that this is through modulation of the tumor immune microenvironment."</p> <p>Authors: Ruiz-Manzano RA,Palacios-Arreola MI,Hernández-Cervantes R,Del Río-Araiza VH,Nava-Castro KE,Ostoa-Saloma P,Muñoz-Cruz S,Morales-Montor J</p>	<p>Year 2020</p> <p>Species Mouse</p>
<p>International journal of biological sciences</p> <p>Deletion of the aryl hydrocarbon receptor enhances the inflammatory response to <i>Leishmania major</i> infection.</p> <p>Authors: Elizondo G,Rodríguez-Sosa M,Estrada-Muñiz E,Gonzalez FJ,Vega L</p>	<p>Year 2012</p> <p>Species Mouse</p>

[View more ELISA references on thermofisher.com](#)

Neutralization (2)

<p>Cell death & disease</p> <p>Depletion of ID3 enhances mesenchymal stem cells therapy by targeting BMP4 in Sjögren's syndrome.</p> <p>Authors: Hu L,Xu J,Wu T,Fan Z,Sun L,Liu Y,Li Y,Zhang C,Wang J,Ding Y,Wang S</p>	<p>Year 2020</p> <p>Species Mouse</p>
--	---

More applications with references on thermofisher.com

- IV (1)
- Misc (1)
- IS (3)

For Research Use Only. Not for use in diagnostic procedures. Not for resale without express authorization. Products are warranted to operate or perform substantially in conformance with published Product specifications in effect at the time of sale, as set forth in the Production documentation, specifications and/or accompanying package inserts ("Documentation"). No claim of suitability for use in applications regulated by FDA is made. The warranty provided herein is valid only when used by properly trained individuals. Unless otherwise stated in the Documentation, this warranty is limited to one year from date of shipment when the Product is subjected to normal, proper and intended usage. This warranty does not extend to anyone other than the Buyer. Any model or sample furnished to Buyer is merely illustrative of the general type and quality of goods and does not represent that any Product will conform to such model or sample. NO OTHER WARRANTIES, EXPRESS OR IMPLIED, ARE GRANTED INCLUDING WITHOUT LIMITATION, IMPLIED WARRANTIES OF MERCHANTABILITY, FITNESS FOR ANY PARTICULAR PURPOSE, OR NON INFRINGEMENT. BUYER'S EXCLUSIVE REMEDY FOR NON-CONFORMING PRODUCTS DURING THE WARRANTY PERIOD IS LIMITED TO REPAIR, REPLACEMENT OF OR REFUND FOR THE NON-CONFORMING PRODUCT(S) AT SELLER'S SOLE OPTION. THERE IS NO OBLIGATION TO REPAIR, REPLACE OR REFUND FOR PRODUCTS AS THE RESULT OF (I) ACCIDENT, DISASTER OR EVENT OF FORCE MAJEURE, (II) MISUSE, FAULT OR NEGLIGENCE OF OR BY BUYER, (III) USE OF THE PRODUCTS IN A MANNER FOR WHICH THEY WERE NOT DESIGNED, OR (IV) IMPROPER STORAGE AND HANDLING OF THE PRODUCTS. Unless otherwise expressly stated on the Product or in the documentation accompanying the Product, the Product is intended for research only and is not to be used for any other purpose, including without limitation, unauthorized commercial uses, in vitro diagnostic uses, ex vivo or in vivo therapeutic uses, or any type of consumption by or application to human or animals.