

Leptin Polyclonal Antibody, PeproTech®

Product Details

Size	1 mg
Species Reactivity	Human
Published Species	Bovine, Human, Mouse
Host/Isotype	Rabbit
Class	Polyclonal
Type	Antibody
Conjugate	Unconjugated
Immunogen	E.coli-derived Recombinant Human Leptin
Form	Lyophilized
Concentration	0.1-1.0 mg/mL
Purification	Antigen affinity chromatography
Storage buffer	PBS
Contains	no preservative
Storage conditions	-20°C

Applications	Tested Dilution	Publications
Western Blot (WB)	0.1-0.2 µg/mL	1 Publication
ELISA (ELISA)	0.5-2.0 µg/mL	3 Publications
Radioimmune Assays (RIA)	-	1 Publication

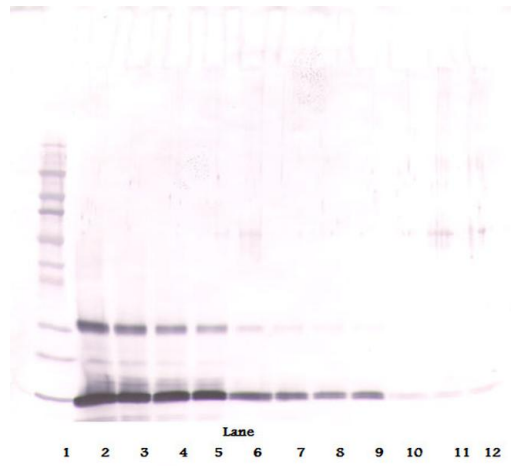
Product Specific Information

AA Sequence of recombinant protein: MVPIQKVQDD TKTLIKTIVT RINDISHTQS VSSKQKVTGL DFIPGLHPIL TSKMDQTLA VYQQILTSMPSRNVIQISND LENLRDLLHV LAFSKSCHLP WASGLETLDLDS LGGVLEASGY STEVVALSRL QGSLQDMLWQ LDLSPGC.

Preparation: Produced from sera of rabbits immunized with highly pure Recombinant Human Leptin. Anti-Human Leptin-specific antibody was purified by affinity chromatography employing an immobilized Human Leptin matrix.

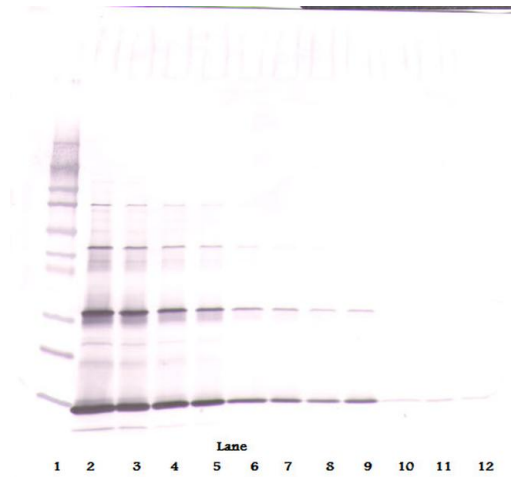
Sandwich ELISA: To detect Human Leptin by sandwich ELISA (using 100 µL/well antibody solution) a concentration of 0.5-2.0 µg/mL of this antibody is required. This antigen affinity purified antibody, in conjunction with PeproTech Biotinylated Anti-Human Leptin (500-P86Bt) as a detection antibody, allows the detection of at least 0.2-0.4 ng/well of Recombinant Human Leptin.

Western Blot: To detect Human Leptin by Western Blot analysis this antibody can be used at a concentration of 0.1-0.2 µg/mL. Used in conjunction with compatible secondary reagents the detection limit for Recombinant Human Leptin is 1.5-3.0 ng/lane, under either reducing or non-reducing conditions.



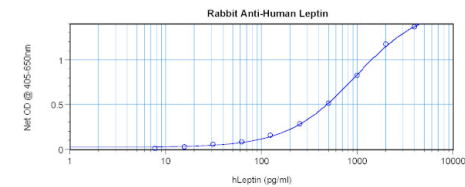
Leptin Antibody (500-P86-1MG) in WB

Western Blot: To detect Human Leptin by Western Blot analysis Leptin Polyclonal Antibody (Product # 500-P86-1MG) can be used at a concentration of 0.1-0.2 µg/mL. Used in conjunction with compatible secondary reagents the detection limit for Recombinant Human Leptin is 1.5-3.0 ng/lane, under either reducing or non-reducing conditions.



Leptin Antibody (500-P86-1MG) in WB

Western Blot: To detect Human Leptin by Western Blot analysis Leptin Polyclonal Antibody (Product # 500-P86-1MG) can be used at a concentration of 0.1-0.2 µg/mL. Used in conjunction with compatible secondary reagents the detection limit for Recombinant Human Leptin is 1.5-3.0 ng/lane, under either reducing or non-reducing conditions.



Leptin Antibody (500-P86-1MG) in ELISA

Sandwich ELISA: To detect Human Leptin by sandwich ELISA (using 100 µL/well antibody solution) a concentration of 0.5-2.0 µg/mL of Leptin Polyclonal Antibody (Product # 500-P86-1MG) is required. This antigen affinity purified antibody, in conjunction with PeproTech Leptin Polyclonal Antibody, Biotin (Product # 500-P86BT-1MG) as a detection antibody, allows the detection of at least 0.2-0.4 ng /well of Recombinant Human Leptin.

Western Blot (1)

<p>The Journal of biological chemistry</p> <p>Adipocyte-selective reduction of the leptin receptors induced by antisense RNA leads to increased adiposity, dyslipidemia, and insulin resistance.</p> <p>Authors: Huan JN,Li J,Han Y,Chen K,Wu N,Zhao AZ</p>	<p>Year 2003</p> <p>Species Mouse</p>
--	---

ELISA (3)

<p>Journal of animal science</p> <p>Performance and serum parameters of calves (Bos taurus) subject to milk restriction associated with supplementation with 2-hydroxy-4-(methylthio)butanoic acid.</p> <p>"500-P86 was used in Enzyme-linked immunosorbent assay to investigate GHS-R1a in hypothalamus and duodenum."</p> <p>Authors: Brito RF,França AFS,Pansani AP,Castro CH,Colugnati DB,Souza LF,Rabelo LA,Nunes-Souza V,Xavier CH,Oliveira GA,Corrêa DS,Ramos AT,Macedo LM,Ferreira RN</p>	<p>Year 2021</p> <p>Species Bovine</p>
<p>Scientific reports</p> <p>Immunoregulation induced by autologous serum collected after acute exercise in obese men: a randomized cross-over trial.</p> <p>Authors: Dorneles GP,da Silva IM,Santos MA,Elsner VR,Fonseca SG,Peres A,Romão PRT</p>	<p>Year 2020</p> <p>Species Human</p>

[View more ELISA references on thermofisher.com](#)

Radioimmune Assays (1)

<p>The Journal of clinical endocrinology and metabolism</p> <p>Expression of leptin (Ob) and leptin receptor (Ob-R) in human fibroblasts: regulation of leptin secretion by insulin.</p> <p>Authors: Glasow A,Kiess W,Anderegg U,Berthold A,Bottner A,Kratszsch J</p>	<p>Year 2001</p> <p>Species Human</p>
--	---

More applications with references on thermofisher.com

For Research Use Only. Not for use in diagnostic procedures. Not for resale without express authorization. Products are warranted to operate or perform substantially in conformance with published Product specifications in effect at the time of sale, as set forth in the Production documentation, specifications and/or accompanying package inserts ("Documentation"). No claim of suitability for use in applications regulated by FDA is made. The warranty provided herein is valid only when used by properly trained individuals. Unless otherwise stated in the Documentation, this warranty is limited to one year from date of shipment when the Product is subjected to normal, proper and intended usage. This warranty does not extend to anyone other than the Buyer. Any model or sample furnished to Buyer is merely illustrative of the general type and quality of goods and does not represent that any Product will conform to such model or sample. NO OTHER WARRANTIES, EXPRESS OR IMPLIED, ARE GRANTED INCLUDING WITHOUT LIMITATION, IMPLIED WARRANTIES OF MERCHANTABILITY, FITNESS FOR ANY PARTICULAR PURPOSE, OR NON INFRINGEMENT. BUYER'S EXCLUSIVE REMEDY FOR NON-CONFORMING PRODUCTS DURING THE WARRANTY PERIOD IS LIMITED TO REPAIR, REPLACEMENT OF OR REFUND FOR THE NON-CONFORMING PRODUCT(S) AT SELLER'S SOLE OPTION. THERE IS NO OBLIGATION TO REPAIR, REPLACE OR REFUND FOR PRODUCTS AS THE RESULT OF (I) ACCIDENT, DISASTER OR EVENT OF FORCE MAJEURE, (II) MISUSE, FAULT OR NEGLIGENCE OF OR BY BUYER, (III) USE OF THE PRODUCTS IN A MANNER FOR WHICH THEY WERE NOT DESIGNED, OR (IV) IMPROPER STORAGE AND HANDLING OF THE PRODUCTS. Unless otherwise expressly stated on the Product or in the documentation accompanying the Product, the Product is intended for research only and is not to be used for any other purpose, including without limitation, unauthorized commercial uses, in vitro diagnostic uses, ex vivo or in vivo therapeutic uses, or any type of consumption by or application to human or animals.