

CD62L (L-Selectin) Monoclonal Antibody (MEL-14), Alexa Fluor™ 561, eBioscience™

Product Details	
Size	100 µg
Species Reactivity	Mouse
Host/Isotype	Rat / IgG2a, kappa
Recommended Isotype Control	Rat IgG2a kappa Isotype Control (eBR2a), Alexa Fluor™ 561, eBioscience™
Class	Monoclonal
Type	Antibody
Clone	MEL-14
Conjugate	Alexa Fluor™ 561
Excitation/Emission Max	556/569 nm
Form	Liquid
Concentration	0.2 mg/mL
Purification	Affinity chromatography
Storage buffer	PBS, pH 7.2
Contains	0.09% sodium azide
Storage conditions	4° C, store in dark, DO NOT FREEZE!
RRID	AB_2896205

Applications	Tested Dilution	Publications
Flow Cytometry (Flow)	0.25 µg/test	-

Product Specific Information

Description: The MEL-14 monoclonal antibody reacts with mouse CD62L, a 76 kDa member of the selectin family. CD62L is expressed by neutrophils, monocytes, and subsets of T, B, and NK cells and binds a number of glycosylated, fucosylated, sulfated sialylated glycoproteins including CD34, glycam-1 and MAdCam-1. These interactions mediate rolling of lymphocytes on activated endothelium at the sites of inflammation and homing of cells to the high endothelial venules (HEV) of peripheral lymphoid tissues.

Applications Reported: This MEL-14 antibody has been reported for use in flow cytometric analysis.

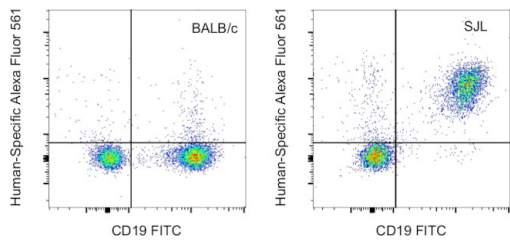
Our internal testing shows that Alexa Fluor 561 non-specifically stains B cells in Swiss Webster and SJL mice. Non-specific staining has not been observed in BALB/c or C57BL/6 mice. Other strains have not been tested. See the Antibody Testing Data for an example of this strain-dependent difference.

Applications Tested: This MEL-14 antibody has been tested by flow cytometric analysis of mouse splenocytes. This may be used at less than or equal to 0.25 µg per test. A test is defined as the amount (µg) of antibody that will stain a cell sample in a final volume of 100 µL. Cell number should be determined empirically but can range from 10⁵ to 10⁸ cells/test. It is recommended that the antibody be carefully titrated for optimal performance in the assay of interest.

Alexa Fluor 561 emits at 575 nm and is intended for use on spectral cytometers where it may be multiplexed with both PE and PE-eFluor 610.

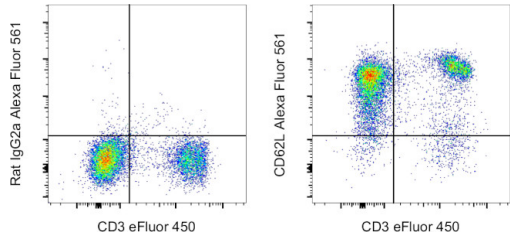
Excitation: 558 nm; Emission: 575 nm; Laser: Yellow-Green Laser

Product Images For CD62L (L-Selectin) Monoclonal Antibody (MEL-14), Alexa Fluor™ 561, eBioscience™



CD62L (L-Selectin) Antibody (505-0621-82) in Flow

Alexa Fluor 561 non-specific staining of B cells in the SJL strain of mice. Splenocytes from BALB/c (left) and SJL (right) strains of mice were stained with Anti-Mouse CD19 Monoclonal Antibody conjugated to FITC and a non-cross-reactive, human-specific monoclonal antibody conjugated to Alexa Fluor 561. These data show that Alexa Fluor 561-conjugated antibodies non-specifically stain B cells in SJL mice (right) and outbred, Swiss Webster mice (data not shown). Non-specific staining has not been observed in BALB/c mice (left) and C57BL/6 mice (data not shown).



CD62L (L-Selectin) Antibody (505-0621-82) in Flow

C57BL/6 mouse splenocytes were stained with CD3 Monoclonal Antibody, eFluor 450 (Product # 48-0032-82) and 0.125 µg of Rat IgG2a kappa Isotype Control, Alexa Fluor 561 (Product # 505-4321-81) (left) or 0.125 µg of CD62L (L-Selectin) Monoclonal Antibody, Alexa Fluor 561 (right). Cells in the lymphocyte gate were used for analysis. This data was collected on a 5-laser Cytex Aurora full spectral cytometer.

For Research Use Only. Not for use in diagnostic procedures. Not for resale without express authorization. Products are warranted to operate or perform substantially in conformance with published Product specifications in effect at the time of sale, as set forth in the Production documentation, specifications and/or accompanying package inserts ("Documentation"). No claim of suitability for use in applications regulated by FDA is made. The warranty provided herein is valid only when used by properly trained individuals. Unless otherwise stated in the Documentation, this warranty is limited to one year from date of shipment when the Product is subjected to normal, proper and intended usage. This warranty does not extend to anyone other than the Buyer. Any model or sample furnished to Buyer is merely illustrative of the general type and quality of goods and does not represent that any Product will conform to such model or sample. NO OTHER WARRANTIES, EXPRESS OR IMPLIED, ARE GRANTED INCLUDING WITHOUT LIMITATION, IMPLIED WARRANTIES OF MERCHANTABILITY, FITNESS FOR ANY PARTICULAR PURPOSE, OR NON INFRINGEMENT. BUYER'S EXCLUSIVE REMEDY FOR NON-CONFORMING PRODUCTS DURING THE WARRANTY PERIOD IS LIMITED TO REPAIR, REPLACEMENT OF OR REFUND FOR THE NON-CONFORMING PRODUCT(S) AT SELLER'S SOLE OPTION. THERE IS NO OBLIGATION TO REPAIR, REPLACE OR REFUND FOR PRODUCTS AS THE RESULT OF (I) ACCIDENT, DISASTER OR EVENT OF FORCE MAJEURE, (II) MISUSE, FAULT OR NEGLIGENCE OF OR BY BUYER, (III) USE OF THE PRODUCTS IN A MANNER FOR WHICH THEY WERE NOT DESIGNED, OR (IV) IMPROPER STORAGE AND HANDLING OF THE PRODUCTS. Unless otherwise expressly stated on the Product or in the documentation accompanying the Product, the Product is intended for research only and is not to be used for any other purpose, including without limitation, unauthorized commercial uses, in vitro diagnostic uses, ex vivo or in vivo therapeutic uses, or any type of consumption by or application to human or animals.