

Connexin 26 Polyclonal Antibody

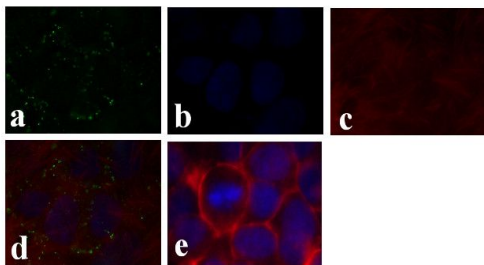
Product Details	
Size	50 µg
Species Reactivity	Human, Mouse, Rat
Published Species	Rat, Mouse, Human, Xenopus
Host/Isotope	Rabbit / IgG
Class	Polyclonal
Type	Antibody
Conjugate	Unconjugated
Immunogen	A 13 amino acid synthetic peptide derived from the C-terminus of the mouse Connexin 26 protein. This mouse sequence differs from the rat sequence by a single amino acid and from the human sequence by two (non-consecutive) amino acids.
Form	Liquid
Concentration	0.25 mg/mL
Purification	Antigen affinity chromatography
Storage buffer	PBS, pH 7.4
Contains	0.1% sodium azide
Storage Conditions	-20°C
RRID	AB_2533903

Applications	Tested	Dilution	Published
Western Blot (WB)	✓	1-2 µg/mL	16 Publications
Immunohistochemistry (IHC)	-	10 µg/mL	13 Publications
Immunofluorescence (IF)	✓	1:100-1:500	21 Publications
Immunohistochemistry (Frozen) (IHC (F))	✓	10-20 µg/mL	3 Publications
Miscellaneous PubMed (MISC)	-		8 Publications
Immunocytochemistry (ICC)	✓	1:100-1:500	7 Publications
Immunoprecipitation (IP)	-		2 Publications
Immunohistochemistry (Paraffin) (IHC (P))	✓	1:10-1:100	1 Publication
ELISA (ELISA)	✓	0.1-1.0 µg/mL	

Product Images For Connexin 26 Polyclonal Antibody

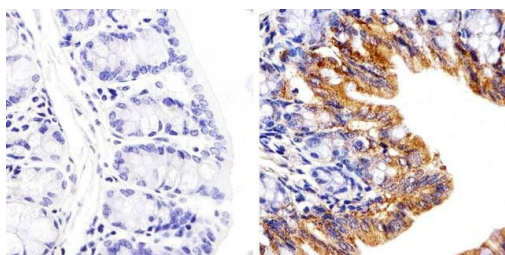
Connexin 26 Antibody (51-2800) in IF

Immunofluorescence analysis of Connexin 26/GJB2 was done on 70% confluent log phase Caco-2 cells. The cells were fixed with 4% paraformaldehyde for 15 minutes, permeabilized with 0.25% Triton™ X-100 for 10 minutes, and blocked with 5% BSA for 1 hour at room temperature. The cells were labeled with Connexin 26/GJB2 Rabbit polyclonal Antibody (Product # 51-2800) at 2 µg/mL in 1% BSA and incubated for 3 hours at room temperature and then labeled with Alexa Fluor 488 Goat Anti-Rabbit IgG Secondary Antibody (Product # A-11008) at a dilution of 1:400 for 30 minutes at room temperature (Panel a: green). Nuclei (Panel b: blue) were stained with SlowFade® Gold Antifade Mountant DAPI (Product # S36938). F-actin (Panel c: red) was stained with Alexa Fluor 594 Phalloidin (Product # A12381). Panel d is a merged image showing junctional localization. Panel e shows no primary antibody control. The images were captured at 20X magnification.



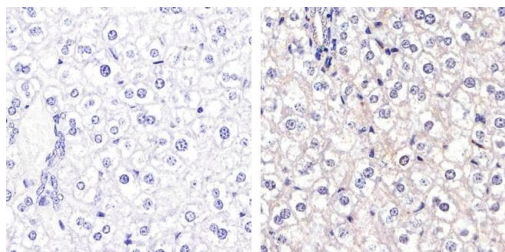
Connexin 26 Antibody (51-2800) in IHC (P)

Immunohistochemistry analysis of Connexin 26/GJB2 showing staining in the cytoplasm of paraffin-embedded mouse colon tissue (right) compared to a negative control without primary antibody (left). To expose target proteins, antigen retrieval was performed using 10mM sodium citrate (pH 6.0), microwaved for 8-15 min. Following antigen retrieval, tissues were blocked in 3% H₂O₂-methanol for 15 min at room temperature, washed with ddH₂O and PBS, and then probed with a Connexin 26/GJB2 polyclonal antibody (Product # 51-2800) diluted in 3% BSA-PBS at a dilution of 1:20 overnight at 4°C in a humidified chamber. Tissues were washed extensively in PBST and detection was performed using an HRP-conjugated secondary antibody followed by colorimetric detection using a DAB kit. Tissues were counterstained with hematoxylin and dehydrated with ethanol and xylene to prep for mounting.



Connexin 26 Antibody (51-2800) in IHC (P)

Immunohistochemistry analysis of Connexin 26 showing staining in the membrane of paraffin-embedded mouse liver tissue (right) compared to a negative control without primary antibody (left). To expose target proteins, antigen retrieval was performed using 10mM sodium citrate (pH 6.0), microwaved for 8-15 min. Following antigen retrieval, tissues were blocked in 3% H₂O₂-methanol for 15 min at room temperature, washed with ddH₂O and PBS, and then probed with a Connexin 26 Polyclonal antibody (Product # 51-2800) diluted in 3% BSA-PBS at a dilution of 1:20 overnight at 4°C in a humidified chamber. Tissues were washed extensively in PBST and detection was performed using an HRP-conjugated secondary antibody followed by colorimetric detection using a DAB kit. Tissues were counterstained with hematoxylin and dehydrated with ethanol and xylene to prep for mounting.



[View more figures on thermofisher.com](https://www.thermofisher.com)

71 References

Western Blot (16)

Frontiers in molecular neuroscience

Mouse *Panx1* Is Dispensable for Hearing Acquisition and Auditory Function.

"Published figure using Connexin 26 polyclonal antibody (Product # 51-2800) in Western Blot"

Authors: Zorzi V, Paciello F, Ziraldo G, Peres C, Mazzarda F, Nardin C, Pasquini M, Chiani F, Raspa M, Scavizzi F, Carrer A, Crispino G, Ciubotaru CD, Monyer H, Fetoni AR, M Salvatore A, Mammano F

Species
Not Applicable

Dilution
Not Cited

Year
2018

PloS one

Mammary gland specific knockdown of the physiological surge in Cx26 during lactation retains normal mammary gland development and function.

"51-2800 was used in immunocytochemistry to determine if patients with loss-of-function Cx26 mutations have a greater susceptibility to impaired breast development"

Authors: Stewart MK, Plante I, Bechberger JF, Naus CC, Laird DW

Species
Mouse

Dilution
Not Cited

Year
2015

[View more WB references on thermofisher.com](#)

Immunohistochemistry (13)

Scientific reports

In vivo genetic manipulation of inner ear connexin expression by bovine adeno-associated viral vectors.

"Published figure using Connexin 26 polyclonal antibody (Product # 51-2800) in Immunofluorescence"

Authors: Crispino G, Galindo Ramirez F, Campioni M, Zorzi V, Praetorius M, Di Pasquale G, Chiorini JA, Mammano F

Species
Mouse
Not Applicable

Dilution
10 µg/mL
Not Cited

Year
2017

Oncotarget

Cx26 knockout predisposes the mammary gland to primary mammary tumors in a DMBA-induced mouse model of breast cancer.

"51-2800 was used in immunohistochemistry to discuss Cx26 knockout in DMBA-induced mouse models and breast cancer"

Authors: Stewart MK, Bechberger JF, Welch I, Naus CC, Laird DW

Species
Not Applicable

Dilution
Not Cited

Year
2015

[View more IHC references on thermofisher.com](#)

More applications with references on thermofisher.com

IF (21)

IHC (F) (3)

MISC (8)

ICC (7)

IP (2)

IHC (P) (1)

For Research Use Only. Not for use in diagnostic procedures. Not for resale without express authorization. Products are warranted to operate or perform substantially in conformance with published Product specifications in effect at the time of sale, as set forth in the Production documentation, specifications and/or accompanying package inserts ("Documentation"). No claim of suitability for use in applications regulated by FDA is made. The warranty provided herein is valid only when used by properly trained individuals. Unless otherwise stated in the Documentation, this warranty is limited to one year from date of shipment when the Product is subjected to normal, proper and intended usage. This warranty does not extend to anyone other than the Buyer. Any model or sample furnished to Buyer is merely illustrative of the general type and quality of goods and does not represent that any Product will conform to such model or sample. NO OTHER WARRANTIES, EXPRESS OR IMPLIED, ARE GRANTED INCLUDING WITHOUT LIMITATION, IMPLIED WARRANTIES OF MERCHANTABILITY, FITNESS FOR ANY PARTICULAR PURPOSE, OR NON-INFRINGEMENT. BUYER'S EXCLUSIVE REMEDY FOR NON-CONFORMING PRODUCTS DURING THE WARRANTY PERIOD IS LIMITED TO REPAIR, REPLACEMENT OF OR REFUND FOR THE NON-CONFORMING PRODUCT(S) AT SELLER'S SOLE OPTION. THERE IS NO OBLIGATION TO REPAIR, REPLACE OR REFUND FOR PRODUCTS AS THE RESULT OF (I) ACCIDENT, DISASTER OR EVENT OF FORCE MAJEURE, (II) MISUSE, FAULT OR NEGLIGENCE OF OR BY BUYER, (III) USE OF THE PRODUCTS IN A MANNER FOR WHICH THEY WERE NOT DESIGNED, OR (IV) IMPROPER STORAGE AND HANDLING OF THE PRODUCTS. Unless otherwise expressly stated on the Product or in the documentation accompanying the Product, the Product is intended for research only and is not to be used for any other purpose, including without limitation, unauthorized commercial uses, in vitro diagnostic uses, ex vivo or in vivo therapeutic uses, or any type of consumption by or application to human or animals.