

PSD-95 Polyclonal Antibody

Product Details	
Size	100 µg
Species Reactivity	Human, Mouse, Rat
Published Species	Rat, Human, Mouse, Chicken
Host/Isotope	Rabbit / IgG
Class	Polyclonal
Type	Antibody
Conjugate	Unconjugated
Immunogen	KLH-conjugated synthetic peptide derived from the C-terminal region of human PSD-95.
Form	Liquid
Concentration	0.25 mg/mL
Purification	Antigen affinity chromatography
Storage buffer	PBS, pH 7.4
Contains	0.1% sodium azide
Storage Conditions	-20°C
RRID	AB_2533914

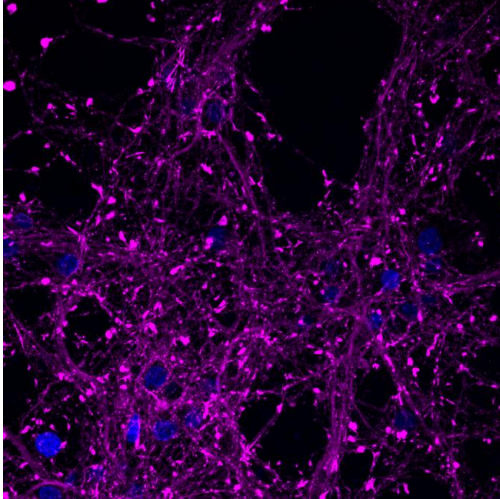
Applications	Tested	Dilution	Published
Immunocytochemistry (ICC)	✓	1:200	7 Publications
Immunofluorescence (IF)	✓	1:200	17 Publications
Immunohistochemistry (IHC)	-	1:400	10 Publications
Immunohistochemistry (Frozen) (IHC (F))	-		3 Publications
Western Blot (WB)	✓	1.0 µg/mL	8 Publications
Immunohistochemistry - Free Floating (IHC (Free))	-	1:200	2 Publications
Miscellaneous PubMed (MISC)	-	1:200	5 Publications
ELISA (ELISA)	✓	0.1-1.0 µg/mL	
Immunoprecipitation (IP)	✓	5 µg	

Product Specific Information

This antibody recognizes the 95 kDa PSD-95 protein. Cross-reactivity with an unknown protein at ~50 kDa has been observed in western blots with rat brain homogenates. Western blots with mouse brain homogenates did not show such a band.

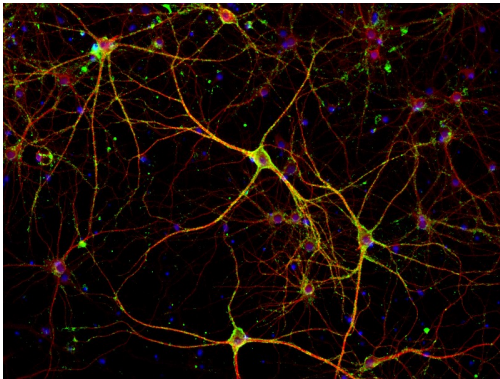
Positive reactivity of this antibody was confirmed on western blots of rat brain homogenates and lysates of PSD-95- transfected HEK293 (human embryonic kidney) cells.

Product Images For PSD-95 Polyclonal Antibody



PSD-95 Antibody (51-6900) in IF

Immunofluorescent analysis of postsynaptic density protein (PSD-95) in E18 Sparague Dawley primary cortical neuronal cells. The cells were fixed with 4% formaldehyde for 15 mins, permeabilized with 0.25% Triton X-100 in PBS for 10 mins, and blocked with 3% BSA in PBS for 30 mins at RT. Cells were stained with a PSD-95 rabbit polyclonal antibody (Product # 51-6900) at a dilution of 1:200 in 3% BSA in PBS for 1 hr at RT, and then incubated with Invitrogen™ AlexaFluor™ 647 Plus goat anti-rabbit IgG secondary antibody (Product # A32733) at a dilution of 1:1000 for 1 hr at RT. Nuclei were stained with Hoechst 33342 (Product # H3570). The image contains overlay of neuronal PSD-95 (red) and nuclei (blue). Images were taken on a Zeiss LSM 710 confocal microscope at 40X magnification.



PSD-95 Antibody (51-6900) in IF

Immunofluorescent analysis of PSD-95 (green) and MAP2 (red) on rat primary cortical neurons cultured for 28 days in the B-27 Plus Neuronal Culture System (Product # A3653401). At day 28 the cells were fixed with 4% paraformaldehyde for 15 min, permeabilized with 0.1% triton X-100 for 30min, and blocked with 1% BSA for 30 min at room temperature. Cells were stained with anti-PSD95 antibody (Product # 51-6900) at a dilution of 1:200, and anti-MAP2 (Product # 13-1500) at a dilution of 1:400, in 1% BSA staining buffer, overnight at 4C, and then incubated with Alexa Fluor 488 conjugated donkey anti-rabbit (Product # A21206) and Alexa Fluor 594 donkey anti-mouse (Product # A21203) antibodies at a dilution of 1:1000 for 30 min. at room temp. Wash 3 times with DPBS. Stain with DAPI for nucleus.

[View more figures on thermofisher.com](#)

52 References

Immunocytochemistry (7)

Nature communications

Human neuroepithelial stem cell regional specificity enables spinal cord repair through a relay circuit.

Authors: Dell'Anno MT, Wang X, Onorati M, Li M, Talpo F, Sekine Y, Ma S, Liu F, Cafferty WBJ, Sestan N, Strittmatter SM

Species
Human

Dilution
Not Cited

Year
2018

Scientific reports

ON and OFF retinal ganglion cells differentially regulate serotonergic and GABAergic activity in the dorsal raphe nucleus.

"51-6900 was used in immunohistochemistry to investigate differential regulation of serotonergic and GABAergic activity in the dorsal raphe nucleus by ON and OFF retinal ganglion cells"

Authors: Zhang T, Huang L, Zhang L, Tan M, Pu M, Pickard GE, So KF, Ren C

Species
Not Applicable

Dilution
Not Cited

Year
2016

Immunofluorescence (17)

Nature communications

Human neuroepithelial stem cell regional specificity enables spinal cord repair through a relay circuit.

Authors: Dell'Anno MT,Wang X,Onorati M,Li M,Talpo F,Sekine Y,Ma S,Liu F,Cafferty WBJ,Sestan N,Strittmatter SM

Species
Human

Dilution
Not Cited

Year
2018

Disease models and mechanisms

Cerebellar synapse properties and cerebellum-dependent motor and non-motor performance in *Dp71*-null mice.

"Published figure using PSD-95 polyclonal antibody (Product # 51-6900) in Immunofluorescence"

Authors: Helleringer R,Le Verger D,Li X,Izabelle C,Chaussonot R,Belmaati-Cherkaoui M,Dammak R,Decottignies P, Daniel H,Galante M,Vaillend C

Species
Mouse
Not Applicable

Dilution
1:400
1:400

Year
2018

View more IF references on thermofisher.com

More applications with references on thermofisher.com

IHC (10)

IHC (F) (3)

WB (8)

IHC (Free) (2)

MISC (5)

For Research Use Only. Not for use in diagnostic procedures. Not for resale without express authorization. Products are warranted to operate or perform substantially in conformance with published Product specifications in effect at the time of sale, as set forth in the Production documentation, specifications and/or accompanying package inserts ("Documentation"). No claim of suitability for use in applications regulated by FDA is made. The warranty provided herein is valid only when used by properly trained individuals. Unless otherwise stated in the Documentation, this warranty is limited to one year from date of shipment when the Product is subjected to normal, proper and intended usage. This warranty does not extend to anyone other than the Buyer. Any model or sample furnished to Buyer is merely illustrative of the general type and quality of goods and does not represent that any Product will conform to such model or sample. NO OTHER WARRANTIES, EXPRESS OR IMPLIED, ARE GRANTED INCLUDING WITHOUT LIMITATION, IMPLIED WARRANTIES OF MERCHANTABILITY, FITNESS FOR ANY PARTICULAR PURPOSE, OR NON INFRINGEMENT. BUYER'S EXCLUSIVE REMEDY FOR NON-CONFORMING PRODUCTS DURING THE WARRANTY PERIOD IS LIMITED TO REPAIR, REPLACEMENT OF OR REFUND FOR THE NON-CONFORMING PRODUCT(S) AT SELLER'S SOLE OPTION. THERE IS NO OBLIGATION TO REPAIR, REPLACE OR REFUND FOR PRODUCTS AS THE RESULT OF (I) ACCIDENT, DISASTER OR EVENT OF FORCE MAJEURE, (II) MISUSE, FAULT OR NEGLIGENCE OF OR BY BUYER, (III) USE OF THE PRODUCTS IN A MANNER FOR WHICH THEY WERE NOT DESIGNED, OR (IV) IMPROPER STORAGE AND HANDLING OF THE PRODUCTS. Unless otherwise expressly stated on the Product or in the documentation accompanying the Product, the Product is intended for research only and is not to be used for any other purpose, including without limitation, unauthorized commercial uses, in vitro diagnostic uses, ex vivo or in vivo therapeutic uses, or any type of consumption by or application to human or animals.