

CD14 Monoclonal Antibody (61D3), Alexa Fluor 488, eBioscience™

Product Details	
Size	100 Tests
Species Reactivity	Human
Host/Isotope	Mouse / IgG1, kappa
Recommended Isotype Control	Mouse IgG1 kappa Isotype Control (P3.6.2.8.1), Alexa Fluor 488, eBioscience™
Class	Monoclonal
Type	Antibody
Clone	61D3
Conjugate	Alexa Fluor® 488
Form	Liquid
Concentration	5 µl/Test
Purification	Affinity chromatography
Storage buffer	PBS, pH 7.2, with 0.2% BSA, 0.1% gelatin
Contains	0.09% sodium azide
Storage Conditions	4° C, store in dark, DO NOT FREEZE!
RRID	AB_2744748

Applications	Tested	Dilution	Published
Flow Cytometry (Flow)	✓	5 µL (0.5 µg)/test	

Product Specific Information

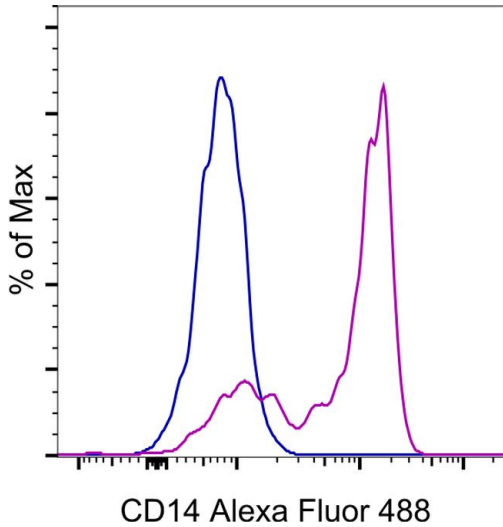
Description: The 61D3 monoclonal antibody reacts with human CD14, a 53-55 kDa GPI-linked glycoprotein. CD14 is expressed on monocytes, interfollicular macrophages and some dendritic cells. Complexes of LPS and LBP (LPS-Binding Protein) bind with high affinity to monocytes through the surface CD14.

Applications Reported: This 61D3 antibody has been reported for use in flow cytometric analysis.

Applications Tested: This 61D3 antibody has been pre-diluted and tested by flow cytometric analysis of normal human peripheral blood cells. This may be used at 5 µL (0.5 µg) per test. A test is defined as the amount (µg) of antibody that will stain a cell sample in a final volume of 100 µL. Cell number should be determined empirically but can range from 10⁵ to 10⁸ cells/test.

Excitation: 488 nm; **Emission:** 519 nm; **Laser:** Blue Laser

Product Images For CD14 Monoclonal Antibody (61D3), Alexa Fluor 488, eBioscience™



CD14 Antibody (53-0149-42) in Flow

Normal human peripheral blood cells were stained with Mouse IgG1 kappa Isotype Control, Alexa Fluor® 488 (Product # 53-4714-82) (blue histogram) or CD14 Monoclonal Antibody, Alexa Fluor® 488 (purple histogram). Cells in the monocyte gate were used for analysis.

For Research Use Only. Not for use in diagnostic procedures. Not for resale without express authorization. Products are warranted to operate or perform substantially in conformance with published Product specifications in effect at the time of sale, as set forth in the Production documentation, specifications and/or accompanying package inserts ("Documentation"). No claim of suitability for use in applications regulated by FDA is made. The warranty provided herein is valid only when used by properly trained individuals. Unless otherwise stated in the Documentation, this warranty is limited to one year from date of shipment when the Product is subjected to normal, proper and intended usage. This warranty does not extend to anyone other than the Buyer. Any model or sample furnished to Buyer is merely illustrative of the general type and quality of goods and does not represent that any Product will conform to such model or sample. NO OTHER WARRANTIES, EXPRESS OR IMPLIED, ARE GRANTED INCLUDING WITHOUT LIMITATION, IMPLIED WARRANTIES OF MERCHANTABILITY, FITNESS FOR ANY PARTICULAR PURPOSE, OR NON-INFRINGEMENT. BUYER'S EXCLUSIVE REMEDY FOR NON-CONFORMING PRODUCTS DURING THE WARRANTY PERIOD IS LIMITED TO REPAIR, REPLACEMENT OF OR REFUND FOR THE NON-CONFORMING PRODUCT(S) AT SELLER'S SOLE OPTION. THERE IS NO OBLIGATION TO REPAIR, REPLACE OR REFUND FOR PRODUCTS AS THE RESULT OF (I) ACCIDENT, DISASTER OR EVENT OF FORCE MAJEURE, (II) MISUSE, FAULT OR NEGLIGENCE OF OR BY BUYER, (III) USE OF THE PRODUCTS IN A MANNER FOR WHICH THEY WERE NOT DESIGNED, OR (IV) IMPROPER STORAGE AND HANDLING OF THE PRODUCTS. Unless otherwise expressly stated on the Product or in the documentation accompanying the Product, the Product is intended for research only and is not to be used for any other purpose, including without limitation, unauthorized commercial uses, in vitro diagnostic uses, ex vivo or in vivo therapeutic uses, or any type of consumption by or application to human or animals.