

# CD20 Monoclonal Antibody (L26), Alexa Fluor 488, eBioscience™

Product Details	
Size	100 µg
Species Reactivity	Cynomolgus Monkey, Human, Rhesus monkey
Published Species	Human
Host/Isotype	Mouse / IgG2a, kappa
Recommended Isotype Control	Mouse IgG2a kappa Isotype Control (eBM2a), Alexa Fluor 488, eBioscience™
Class	Monoclonal
Type	Antibody
Clone	L26
Conjugate	Alexa Fluor® 488
Form	Liquid
Concentration	0.5 mg/mL
Purification	Affinity chromatography
Storage buffer	PBS, pH 7.2, with 0.1% gelatin
Contains	0.09% sodium azide
Storage Conditions	4° C, store in dark, DO NOT FREEZE!
RRID	AB_10734358

Applications	Tested Dilution	Publications
Immunohistochemistry (IHC)	-	2 Publications
Immunohistochemistry (Paraffin) (IHC (P))	10 µg/mL	-
Immunohistochemistry (Frozen) (IHC (F))	10 µg/mL	-
Immunocytochemistry (ICC)	-	1 Publication
Immunofluorescence (IF)	-	4 Publications
Miscellaneous PubMed (Misc)	-	1 Publication
Immunocytochemistry (ICC/IF)	10 µg/mL	-

## Product Specific Information

Description: The monoclonal antibody L26 recognizes human CD20, a two transmembrane spanning protein found on precursor and mature B lymphocytes. Expression is lost upon differentiation to plasma cells. The levels of CD20 are critical in evaluating malignant B lymphocytes including Non-Hodgkin's Lymphoma, and Acute B cell, Chronic Lymphocytic and Hairy-Cell Leukemias. CD20 plays a role in B cell differentiation and activation. The structure of the protein shows a small extracellular loop with the carboxy and amino termini in the cytoplasmic compartment. The L26 antibody recognizes an epitope in the cytoplasmic domain and therefore requires permeabilization of the tissue for staining applications. Unlike many anti-CD20 antibodies that recognize the extracellular domain, the epitope recognized by L26 will not be blocked by therapeutic antibodies to CD20, like Rituximab.

Applications Reported: This L26 antibody has been reported for use in immunohistochemical staining of frozen tissue sections, and immunohistochemical staining of formalin-fixed paraffin embedded tissue sections.

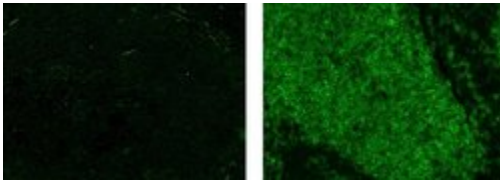
Applications Tested: This L26 antibody has been tested by immunohistochemical staining of human FFPE tonsil with low pH antigen retrieval (cat. 00-4955) and can be used at less than or equal to 10 µg/mL. It is recommended that the antibody be carefully titrated for optimal performance in the assay of interest.

It has been reported that the L26 antibody when used without antigen retrieval will detect a subpopulation of CD20-positive cells. The L26 antibody can be used with high pH antigen retrieval, although the quality of the staining and cell morphology is not optimal. This product has been optimized for use in immunohistochemistry. We do not recommend its use in flow cytometry. For flow cytometry applications, please refer to clone 2H7, cat. 11-0209.

Excitation: 488 nm; Emission: 519 nm; Laser: Blue Laser.

Filtration: 0.2 µm post-manufacturing filtered.

### Product Images For CD20 Monoclonal Antibody (L26), Alexa Fluor 488, eBioscience™



#### CD20 Antibody (53-0202-82) in IHC (P)

Immunohistochemistry on formalin-fixed paraffin embedded human tonsil, using 10 µg/mL of Mouse IgG2a K Isotype Control Alexa Fluor® 488 (Product # 53-4724-80) (left) or 10 µg/mL Anti-Human CD20 Alexa Fluor® 488 (right).

[View more figures on thermofisher.com](https://www.thermofisher.com)

## 8 References

### Immunohistochemistry (2)

The Journal of clinical investigation

#### Accumulation of follicular CD8+ T cells in pathogenic SIV infection.

"Published figure using CD20 monoclonal antibody (Product # 53-0202-82) in Immunohistochemistry"

Authors: Ferrando-Martinez S, Moysi E, Pegu A, Andrews S, Nganou Makamdop K, Ambrozak D, McDermott AB, Palesch D, Paiardini M, Pavlakis GN, Brenchley JM, Douek D, Mascola JR, Petrovas C, Koup RA

**Species**  
Not Applicable

**Dilution**  
Not Cited

**Year**  
2018

Cell death and differentiation

#### Functional disparities among BCL-2 members in tonsillar and leukemic B-cell subsets assessed by BH3-mimetic profiling.

"Published figure using CD20 monoclonal antibody (Product # 53-0202-82) in Immunofluorescence"

Authors: Peperzak V, Slinger E, Ter Burg J, Eldering E

**Species**  
Human  
Not Applicable

**Dilution**  
Not Cited  
Not Cited

**Year**  
2017

### Immunocytochemistry (1)

Scientific data

#### Highly multiplexed immunofluorescence images and single-cell data of immune markers in tonsil and lung cancer.

"Published figure using CD20 monoclonal antibody (Product # 53-0202-82) in Immunocytochemistry"

Authors: Rashid R, Gaglia G, Chen YA, Lin JR, Du Z, Maliga Z, Schapiro D, Yapp C, Muhlich J, Sokolov A, Sorger P, Santagata S

**Species**  
Not Applicable

**Dilution**  
Not Cited

**Year**  
2019

### Immunofluorescence (4)

The Journal of clinical investigation

#### Accumulation of follicular CD8+ T cells in pathogenic SIV infection.

"Published figure using CD20 monoclonal antibody (Product # 53-0202-82) in Immunohistochemistry"

Authors: Ferrando-Martinez S, Moysi E, Pegu A, Andrews S, Nganou Makamdop K, Ambrozak D, McDermott AB, Palesch D, Paiardini M, Pavlakis GN, Brenchley JM, Douek D, Mascola JR, Petrovas C, Koup RA

**Species**  
Not Applicable

**Dilution**  
Not Cited

**Year**  
2018

[View more IF references on thermofisher.com](#)

### More applications with references on thermofisher.com

### Misc (1)

For Research Use Only. Not for use in diagnostic procedures. Not for resale without express authorization. Products are warranted to operate or perform substantially in conformance with published Product specifications in effect at the time of sale, as set forth in the Production documentation, specifications and/or accompanying package inserts ("Documentation"). No claim of suitability for use in applications regulated by FDA is made. The warranty provided herein is valid only when used by properly trained individuals. Unless otherwise stated in the Documentation, this warranty is limited to one year from date of shipment when the Product is subjected to normal, proper and intended usage. This warranty does not extend to anyone other than the Buyer. Any model or sample furnished to Buyer is merely illustrative of the general type and quality of goods and does not represent that any Product will conform to such model or sample. NO OTHER WARRANTIES, EXPRESS OR IMPLIED, ARE GRANTED INCLUDING WITHOUT LIMITATION, IMPLIED WARRANTIES OF MERCHANTABILITY, FITNESS FOR ANY PARTICULAR PURPOSE, OR NON-INFRINGEMENT. BUYER'S EXCLUSIVE REMEDY FOR NON-CONFORMING PRODUCTS DURING THE WARRANTY PERIOD IS LIMITED TO REPAIR, REPLACEMENT OF OR REFUND FOR THE NON-CONFORMING PRODUCT(S) AT SELLER'S SOLE OPTION. THERE IS NO OBLIGATION TO REPAIR, REPLACE OR REFUND FOR PRODUCTS AS THE RESULT OF (I) ACCIDENT, DISASTER OR EVENT OF FORCE MAJEURE, (II) MISUSE, FAULT OR NEGLIGENCE OF OR BY BUYER, (III) USE OF THE PRODUCTS IN A MANNER FOR WHICH THEY WERE NOT DESIGNED, OR (IV) IMPROPER STORAGE AND HANDLING OF THE PRODUCTS. Unless otherwise expressly stated on the Product or in the documentation accompanying the Product, the Product is intended for research only and is not to be used for any other purpose, including without limitation, unauthorized commercial uses, in vitro diagnostic uses, ex vivo or in vivo therapeutic uses, or any type of consumption by or application to human or animals.