

# CD25 Monoclonal Antibody (eBio7D4 (7D4)), Alexa Fluor™ 488, eBioscience™

Product Details	
Size	100 µg
Species Reactivity	Mouse
Host/Isotype	Rat / IgM, kappa
Recommended Isotype Control	Rat IgM Isotype Control (eBRM), Alexa Fluor™ 488, eBioscience™
Class	Monoclonal
Type	Antibody
Clone	eBio7D4 (7D4)
Conjugate	Alexa Fluor™ 488
Excitation/Emission Max	499/520 nm
Form	Liquid
Concentration	0.5 mg/mL
Purification	Affinity chromatography
Storage buffer	PBS, pH 7.2
Contains	0.09% sodium azide
Storage conditions	4° C, store in dark, DO NOT FREEZE!
RRID	AB_763470

Applications	Tested Dilution	Publications
Flow Cytometry (Flow)	0.06 µg/test	2 Publications

## Product Specific Information

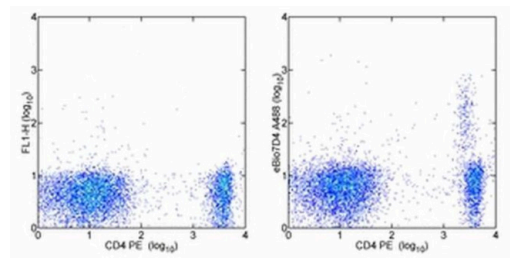
**Description:** The eBio7D4 antibody reacts with mouse CD25, the 55 kDa interleukin-2 receptor  $\alpha$  chain (IL-2R $\alpha$ ). CD25 is expressed by early progenitors of the T and B lineage, as well as by activated mature T and B lymphocytes. By itself, CD25 binds IL-2 only with low affinity. However, CD25 associates with CD122 (IL-2 receptor  $\beta$  chain) and CD132 (common  $\gamma$  chain) to form the high affinity IL-2 receptor. CD25 plays a role in lymphocyte differentiation and activation/proliferation. The epitopes recognized by eBio3C7, PC61.5 and eBio7D4 are all different allowing for depletion with one antibody (typically PC61.5) followed by subsequent detection with another one. eBio7D4 has been reported to block IL-2 binding but can be overcome by additional IL-2. The monoclonal antibody PC61.5 (Product # 16-0251) is recommended for in vivo studies.

**Applications Reported:** This eBio7D4 (7D4) antibody has been reported for use in flow cytometric analysis.

**Applications Tested:** This eBio7D4 (7D4) antibody has been tested by flow cytometric analysis of mouse splenocytes. This can be used at less than or equal to 0.06 µg per test. A test is defined as the amount (µg) of antibody that will stain a cell sample in a final volume of 100 µL. Cell number should be determined empirically but can range from 10<sup>5</sup> to 10<sup>8</sup> cells/test. It is recommended that the antibody be carefully titrated for optimal performance in the assay of interest.

**Excitation:** 488 nm; **Emission:** 519 nm; **Laser:** Blue Laser.

**Filtration:** 0.2 µm post-manufacturing filtered.



**CD25 Antibody (53-0252-82) in Flow**  
Staining of BALB/c splenocytes with Anti-Mouse CD4 PE (Product # 12-0042-82) and 0.06 µg of Rat IgM kappa Isotype Control Alexa Fluor® 488 (Product # 53-4341-80) (left) or Anti-Mouse CD25 Alexa Fluor® 488 (right). Cells in the lymphocyte gate were used for analysis.

2 References

Flow Cytometry (2)

JCI insight	Year 2021
<b>Metabolic preconditioning in CD4+ T cells restores inducible immune tolerance in lupus-prone mice.</b>	
"Published figure using CD25 monoclonal antibody (Product # 53-0252-82) in Flow Cytometry"	
Authors: Wilson CS,Stocks BT,Hoopes EM,Rhoads JP,McNew KL,Major AS,Moore DJ	
Journal of translational autoimmunity	Year 2020
<b>Axenic <i>Caenorhabditis elegans</i> antigen protects against development of type-1 diabetes in NOD mice.</b>	
"Published figure using CD25 monoclonal antibody (Product # 53-0252-82) in Flow Cytometry"	
Authors: Jackson-Thompson BM,Torrero M,Mitre BK,Long J,Packiam M,Mitre E	

For Research Use Only. Not for use in diagnostic procedures. Not for resale without express authorization. Products are warranted to operate or perform substantially in conformance with published Product specifications in effect at the time of sale, as set forth in the Production documentation, specifications and/or accompanying package inserts ("Documentation"). No claim of suitability for use in applications regulated by FDA is made. The warranty provided herein is valid only when used by properly trained individuals. Unless otherwise stated in the Documentation, this warranty is limited to one year from date of shipment when the Product is subjected to normal, proper and intended usage. This warranty does not extend to anyone other than the Buyer. Any model or sample furnished to Buyer is merely illustrative of the general type and quality of goods and does not represent that any Product will conform to such model or sample. NO OTHER WARRANTIES, EXPRESS OR IMPLIED, ARE GRANTED INCLUDING WITHOUT LIMITATION, IMPLIED WARRANTIES OF MERCHANTABILITY, FITNESS FOR ANY PARTICULAR PURPOSE, OR NON-INFRINGEMENT. BUYER'S EXCLUSIVE REMEDY FOR NON-CONFORMING PRODUCTS DURING THE WARRANTY PERIOD IS LIMITED TO REPAIR, REPLACEMENT OF OR REFUND FOR THE NON-CONFORMING PRODUCT(S) AT SELLER'S SOLE OPTION. THERE IS NO OBLIGATION TO REPAIR, REPLACE OR REFUND FOR PRODUCTS AS THE RESULT OF (I) ACCIDENT, DISASTER OR EVENT OF FORCE MAJEURE, (II) MISUSE, FAULT OR NEGLIGENCE OF OR BY BUYER, (III) USE OF THE PRODUCTS IN A MANNER FOR WHICH THEY WERE NOT DESIGNED, OR (IV) IMPROPER STORAGE AND HANDLING OF THE PRODUCTS. Unless otherwise expressly stated on the Product or in the documentation accompanying the Product, the Product is intended for research only and is not to be used for any other purpose, including without limitation, unauthorized commercial uses, in vitro diagnostic uses, ex vivo or in vivo therapeutic uses, or any type of consumption by or application to human or animals.