

LYVE1 Monoclonal Antibody (ALY7), Alexa Fluor™ 488, eBioscience™

Product Details	
Size	100 µg
Species Reactivity	Mouse
Published Species	Mouse
Host/Isotype	Rat / IgG1, kappa
Recommended Isotype Control	Rat IgG1 kappa Isotype Control (eBRG1), Alexa Fluor™ 488, eBioscience™
Class	Monoclonal
Type	Antibody
Clone	ALY7
Conjugate	Alexa Fluor™ 488
Excitation/Emission Max	499/520 nm
Form	Liquid
Concentration	0.5 mg/mL
Purification	Affinity chromatography
Storage buffer	PBS, pH 7.2
Contains	0.09% sodium azide
Storage conditions	4° C, store in dark, DO NOT FREEZE!
RRID	AB_1633415

Applications	Tested Dilution	Publications
Immunohistochemistry (IHC)	-	22 Publications
Immunohistochemistry (Frozen) (IHC (F))	Assay-Dependent	3 Publications
Immunocytochemistry (ICC/IF)	Assay-Dependent	8 Publications
Flow Cytometry (Flow)	Assay-Dependent	13 Publications

Product Specific Information

Description: The monoclonal antibody ALY7 recognizes mouse LYVE-1, a transmembrane glycoprotein with similarity to CD44. The extracellular domain contains a conserved hyaluronan binding domain also found in CD44. Expression is found on lymphatic and liver endothelial cells and some populations of macrophages. The lymphatic system is responsible for transporting proteins and cells (especially dendritic cells) to tissues throughout the body, thereby acting as immune surveyors. LYVE-1 is one characteristic protein, along with podoplanin, PROX-1, Tie-2 and VEGFR-3, that is expressed on lymphatic endothelial cells (LECS). The ligand for LYVE-1 is hyaluronan, a large mucopolysaccharide. Although LYVE-1 can bind hyaluronan in vitro, the site for ligand binding in vivo is masked by sialylated O-linked glycan chains. It is postulated that binding to ligand requires modification/unmasking to expose the binding site. The development and remodeling of the endothelium after injury is an area of extensive study. When transplanted, hematopoietic stem cells (HSCs) can give rise to LECs that integrate into the endothelium in normal and metastatic tissue.

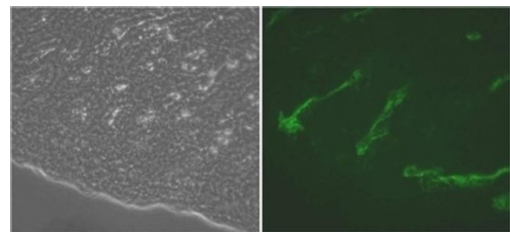
Applications Reported: This ALY7 antibody has been reported for use in flow cytometric analysis and immunohistologic staining of frozen tissue sections.

Applications Tested: This ALY7 antibody has been tested by immunofluorescence microscopy on mouse intestine. This can be used at less than or equal to 2 µg/mL. It is recommended that the antibody be carefully titrated for optimal performance in the assay of interest.

Excitation: 488 nm; Emission: 519 nm; Laser: Blue Laser.

Filtration: 0.2 µm post-manufacturing filtered.

Product Images For LYVE1 Monoclonal Antibody (ALY7), Alexa Fluor™ 488, eBioscience™



LYVE1 Antibody (53-0443-82) in IHC (F)
Immunohistochemistry of cryosections of mouse intestine at 1 µg/mL of Anti-Mouse Lyve-1 Alexa Fluor® 488 (right). Phase image of same field (left).

[View more figures on thermofisher.com](#)

Immunohistochemistry (22)

<p>Frontiers in immunology</p> <p>A single-cell atlas reveals the heterogeneity of meningeal immunity in a mouse model of Methyl CpG binding protein 2 deficiency.</p> <p>"53-0443-82 was used in Immunohistochemistry-immunofluorescence to provide novel insights into meningeal immunity, which is a less studied aspect of neuroimmune interactions in Mecp2-mutated diseases, and offer an essential resource for comparative analyses and data exploration to better understand the functional role of meningeal immunity in RTT."</p> <p>Authors: Li H,Hu M,Huang Z,Wang Y,Xu Y,Deng J,Zhu M,Feng W,Xu X</p>	<p>Year 2023</p> <p>Species Mouse</p> <p>Dilution 1:200</p>
<p>STAR protocols</p> <p>Immuno-localization of definitive hematopoietic stem cells in the vascular niche of mouse fetal liver.</p> <p>"Published figure using LYVE1 monoclonal antibody (Product # 53-0443-82) in Immunohistochemistry"</p> <p>Authors: Biswas A,Singh SK,Kartha GM,Khurana S</p>	<p>Year 2022</p>

View more IHC references on thermofisher.com

Immunohistochemistry (Frozen) (3)

<p>Proceedings of the National Academy of Sciences of the United States of America</p> <p>Lymph node formation and B cell homeostasis require IKK- in distinct endothelial cell-derived compartments.</p> <p>"53-0443-82 was used in Immunohistochemistry-immunofluorescence to reveal that IKK- in distinct EC-derived compartments is uniquely required to promote B cell homeostasis and LN development, and establish that LEC-intrinsic IKK- is absolutely essential for LN formation."</p> <p>Authors: McCorkell KA,Jayachandran N,Cully MD,Freund-Brown J,Weinkopff T,Monslow J,Hu Y,Puré E,Freedman BD, Alvarez JI,Cancro MP,May MJ</p>	<p>Year 2021</p> <p>Species Mouse</p> <p>Dilution 1:100</p>
<p>PloS one</p> <p>The Lymphatic Endothelial mCLCA1 Antibody Induces Proliferation and Growth of Lymph Node Lymphatic Sinuses.</p> <p>"53-0443 was used in Immunofluorescence to investigate the induction of proliferation and growth of lymph node lymphatic sinuses."</p> <p>Authors: Jordan-Williams KL,Ramanujam N,Farr AG,Ruddell A</p>	<p>Year 2017</p> <p>Species Mouse</p>

View more IHC (F) references on thermofisher.com

More applications with references on thermofisher.com

- ICC/IF (8)
- Flow (13)

For Research Use Only. Not for use in diagnostic procedures. Not for resale without express authorization. Products are warranted to operate or perform substantially in conformance with published Product specifications in effect at the time of sale, as set forth in the Production documentation, specifications and/or accompanying package inserts ("Documentation"). No claim of suitability for use in applications regulated by FDA is made. The warranty provided herein is valid only when used by properly trained individuals. Unless otherwise stated in the Documentation, this warranty is limited to one year from date of shipment when the Product is subjected to normal, proper and intended usage. This warranty does not extend to anyone other than the Buyer. Any model or sample furnished to Buyer is merely illustrative of the general type and quality of goods and does not represent that any Product will conform to such model or sample. NO OTHER WARRANTIES, EXPRESS OR IMPLIED, ARE GRANTED INCLUDING WITHOUT LIMITATION, IMPLIED WARRANTIES OF MERCHANTABILITY, FITNESS FOR ANY PARTICULAR PURPOSE, OR NON-INFRINGEMENT. BUYER'S EXCLUSIVE REMEDY FOR NON-CONFORMING PRODUCTS DURING THE WARRANTY PERIOD IS LIMITED TO REPAIR, REPLACEMENT OF OR REFUND FOR THE NON-CONFORMING PRODUCT(S) AT SELLER'S SOLE OPTION. THERE IS NO OBLIGATION TO REPAIR, REPLACE OR REFUND FOR PRODUCTS AS THE RESULT OF (I) ACCIDENT, DISASTER OR EVENT OF FORCE MAJEURE, (II) MISUSE, FAULT OR NEGLIGENCE OF OR BY BUYER, (III) USE OF THE PRODUCTS IN A MANNER FOR WHICH THEY WERE NOT DESIGNED, OR (IV) IMPROPER STORAGE AND HANDLING OF THE PRODUCTS. Unless otherwise expressly stated on the Product or in the documentation accompanying the Product, the Product is intended for research only and is not to be used for any other purpose, including without limitation, unauthorized commercial uses, in vitro diagnostic uses, ex vivo or in vivo therapeutic uses, or any type of consumption by or application to human or animals.