

# Chorionic Gonadotropin Monoclonal Antibody (FB12), Alexa Fluor 488, eBioscience™

Product Details	
Size	100 µg
Species Reactivity	Human
Host/Isotope	Mouse / IgG1, kappa
Recommended Isotype Control	Mouse IgG1 kappa Isotype Control (P3.6.2.8.1), Alexa Fluor 488, eBioscience™
Class	Monoclonal
Type	Antibody
Clone	FB12
Conjugate	Alexa Fluor® 488
Form	Liquid
Concentration	0.5 mg/mL
Purification	Affinity chromatography
Storage buffer	PBS, pH 7.2, with 0.1% gelatin
Contains	0.09% sodium azide
Storage Conditions	4° C, store in dark, DO NOT FREEZE!
RRID	AB_10854569

Applications	Tested Dilution	Publications
Immunocytochemistry (ICC)	20 µg/mL	-
Immunofluorescence (IF)	20 µg/mL	-
Immunohistochemistry (Frozen) (IHC (F))	Assay-Dependent	-

## Product Specific Information

**Description:** This FB12 monoclonal antibody reacts with human Chorionic Gonadotropin (hCG). This secreted glycoprotein is composed of an alpha subunit, which is common to other peptide hormones such as luteinizing hormone (LH), follicle stimulating hormone (FSH) and thyroid stimulating hormone (TSH), and a beta subunit which determines the specificity of the hormone. FB12 recognizes both the intact hCG (composed of the alpha and beta subunits) as well as the free beta subunit, highly expressed in both choriocarcinoma and the serum of pregnant women. hCG is normally expressed by trophoblastoid cells (syncytiotrophoblasts and extravillous cytotrophoblasts) that are responsible for maintenance of the corpus luteum during early gestation. hCG plays an important role in the regulation of angiogenesis through activation of the PI3K/mTOR pathway, resulting in upregulation of vascular endothelial growth factor (VEGF). Ectopic expression of hCG has also been reported in multiple types of cancer (bladder, lung, breast, pancreas, renal).

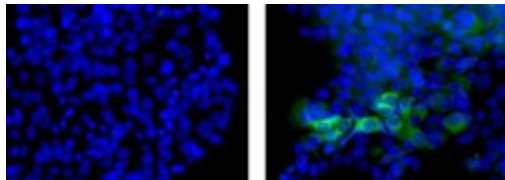
**Applications Reported:** This FB12 antibody has been reported for use in immunohistochemical staining of frozen tissue sections (IHC-F) and immunocytochemistry (ICC).

**Applications Tested:** This FB12 antibody has been tested by immunocytochemistry on fixed BeWo cells. This can be used at less than or equal to 20 µg/mL. It is recommended that the antibody be carefully titrated for optimal performance in the assay of interest.

Excitation: 488 nm; Emission: 519 nm; Laser: Blue Laser.

Filtration: 0.2 µm post-manufacturing filtered.

## Product Images For Chorionic Gonadotropin Monoclonal Antibody (FB12), Alexa Fluor 488, eBioscience™



### Chorionic Gonadotropin Antibody (53-6508-82) in ICC

Immunocytochemistry on fixed BeWo cells using 20 µg/mL Mouse IgG1 Alexa Fluor® 488 Isotype Control (left) or 20 µg/mL Anti-Human Chorionic Gonadotropin Alexa Fluor® 488 (right). Nuclei are counterstained with DAPI.

For Research Use Only. Not for use in diagnostic procedures. Not for resale without express authorization. Products are warranted to operate or perform substantially in conformance with published Product specifications in effect at the time of sale, as set forth in the Production documentation, specifications and/or accompanying package inserts ("Documentation"). No claim of suitability for use in applications regulated by FDA is made. The warranty provided herein is valid only when used by properly trained individuals. Unless otherwise stated in the Documentation, this warranty is limited to one year from date of shipment when the Product is subjected to normal, proper and intended usage. This warranty does not extend to anyone other than the Buyer. Any model or sample furnished to Buyer is merely illustrative of the general type and quality of goods and does not represent that any Product will conform to such model or sample. NO OTHER WARRANTIES, EXPRESS OR IMPLIED, ARE GRANTED INCLUDING WITHOUT LIMITATION, IMPLIED WARRANTIES OF MERCHANTABILITY, FITNESS FOR ANY PARTICULAR PURPOSE, OR NON INFRINGEMENT. BUYER'S EXCLUSIVE REMEDY FOR NON-CONFORMING PRODUCTS DURING THE WARRANTY PERIOD IS LIMITED TO REPAIR, REPLACEMENT OF OR REFUND FOR THE NON-CONFORMING PRODUCT(S) AT SELLER'S SOLE OPTION. THERE IS NO OBLIGATION TO REPAIR, REPLACE OR REFUND FOR PRODUCTS AS THE RESULT OF (I) ACCIDENT, DISASTER OR EVENT OF FORCE MAJEURE, (II) MISUSE, FAULT OR NEGLIGENCE OF OR BY BUYER, (III) USE OF THE PRODUCTS IN A MANNER FOR WHICH THEY WERE NOT DESIGNED, OR (IV) IMPROPER STORAGE AND HANDLING OF THE PRODUCTS. Unless otherwise expressly stated on the Product or in the documentation accompanying the Product, the Product is intended for research only and is not to be used for any other purpose, including without limitation, unauthorized commercial uses, in vitro diagnostic uses, ex vivo or in vivo therapeutic uses, or any type of consumption by or application to human or animals.