

# IL-12/IL-23 p40 Monoclonal Antibody (C17.8), Alexa Fluor™ 488, eBioscience™

Product Details	
Size	100 µg
Species Reactivity	Mouse
Published Species	Mouse
Host/Isotype	Rat / IgG2a, kappa
Recommended Isotype Control	Rat IgG2a kappa Isotype Control (eBR2a), Alexa Fluor™ 488, eBioscience™
Class	Monoclonal
Type	Antibody
Clone	C17.8
Conjugate	Alexa Fluor™ 488
Excitation/Emission Max	499/520 nm
Form	Liquid
Concentration	0.5 mg/mL
Purification	Affinity chromatography
Storage buffer	PBS, pH 7.2
Contains	0.09% sodium azide
Storage conditions	4° C, store in dark, DO NOT FREEZE!
RRID	AB_2574437

Applications	Tested Dilution	Publications
Flow Cytometry (Flow)	0.25 µg/test	4 Publications
Neutralization (Neu)	-	1 Publication

## Product Specific Information

**Description:** The C17.8 antibody reacts with the p40 subunit of IL-12 and IL-23. The C17.8 antibody has been found to neutralize IL-12 and IL-23 bioactivity. For specific neutralization of IL-23 only, please see clone G23-8 (anti-mouse IL-23 p19). IL-12 is a 70 kDa heterodimeric cytokine composed of two covalently linked chains, p40 and p35, and is secreted by activated monocytes, macrophages, and dendritic cells. IL-23 is a heterodimer composed of the disulfide-linked p19 protein and p40 protein, expressed by activated dendritic cells.

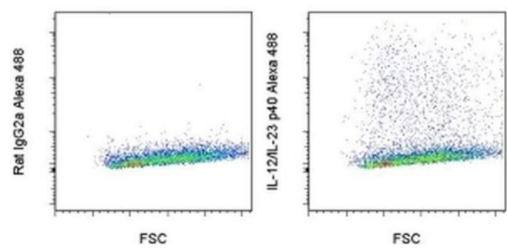
**Applications Reported:** This C17.8 antibody has been reported for use in intracellular staining followed by flow cytometric analysis.

**Applications Tested:** This C17.8 antibody has been tested by intracellular staining and flow cytometric analysis of stimulated mouse cells. This can be used at less than or equal to 0.25 µg per test. A test is defined as the amount (µg) of antibody that will stain a cell sample in a final volume of 100 µL. Cell number should be determined empirically but can range from 10<sup>5</sup> to 10<sup>8</sup> cells/test. It is recommended that the antibody be carefully titrated for optimal performance in the assay of interest.

**Excitation:** 488 nm; **Emission:** 519 nm; **Laser:** Blue Laser.

**Filtration:** 0.2 µm post-manufacturing filtered.

Product Images For IL-12/IL-23 p40 Monoclonal Antibody (C17.8), Alexa Fluor™ 488, eBioscience™



**IL-12/IL-23 p40 Antibody (53-7123-82) in Flow**  
Mouse thioglycolate-elicited peritoneal exudate cells were stimulated overnight with LPS and IFN gamma in the presence of Brefeldin A. Cells were then fixed, permeabilized and stained with 0.125 µg of Rat IgG2a K Isotype Control Alexa Fluor® 488 (left) or 0.125 µg of Anti-Mouse IL-12/IL-23 p40 Alexa Fluor® 488 (right). Total viable cells, as determined with Fixable Viability Dye eFluor® 780 (Product # 65-0865-14), were used for analysis.

[View more figures on thermofisher.com](#)

5 References

Flow Cytometry (4)

**Nature communications**

**Requirements for the differentiation of innate T-bet<sup>high</sup> memory-phenotype CD4<sup>+</sup> T lymphocytes under steady state.**

"53-7123 was used in Flow cytometry/Cell sorting to study whether MP CD4+ T cells are functionally heterogeneous and, if so, what signals specify the differentiation of MP cell subpopulations under homeostatic conditions."

Authors: Kawabe T, Yi J, Kawajiri A, Hilligan K, Fang D, Ishii N, Yamane H, Zhu J, Jankovic D, Kim KS, Trinchieri G, Sher A

**Year**  
2020

**Species**  
Mouse

**Dilution**  
1:100

**Nature communications**

**Chloroquine modulates antitumor immune response by resetting tumor-associated macrophages toward M1 phenotype.**

"Published figure using IL-12/IL-23 p40 monoclonal antibody (Product # 53-7123-82) in Flow Cytometry"

Authors: Chen D, Xie J, Fiskesund R, Dong W, Liang X, Lv J, Jin X, Liu J, Mo S, Zhang T, Cheng F, Zhou Y, Zhang H, Tang K, Ma J, Liu Y, Huang B

**Year**  
2018

[View more Flow references on thermofisher.com](#)

Neutralization (1)

**Oncoimmunology**

**CD1b-autoreactive T cells recognize phospholipid antigens and contribute to antitumor immunity against a CD1b<sup>+</sup> T cell lymphoma.**

"Published figure using IL-12/IL-23 p40 monoclonal antibody (Product # 53-7123-82) in Neutralization"

Authors: Bagchi S, Li S, Wang CR

**Year**  
2021

More applications with references on thermofisher.com

For Research Use Only. Not for use in diagnostic procedures. Not for resale without express authorization. Products are warranted to operate or perform substantially in conformance with published Product specifications in effect at the time of sale, as set forth in the Production documentation, specifications and/or accompanying package inserts ("Documentation"). No claim of suitability for use in applications regulated by FDA is made. The warranty provided herein is valid only when used by properly trained individuals. Unless otherwise stated in the Documentation, this warranty is limited to one year from date of shipment when the Product is subjected to normal, proper and intended usage. This warranty does not extend to anyone other than the Buyer. Any model or sample furnished to Buyer is merely illustrative of the general type and quality of goods and does not represent that any Product will conform to such model or sample. NO OTHER WARRANTIES, EXPRESS OR IMPLIED, ARE GRANTED INCLUDING WITHOUT LIMITATION, IMPLIED WARRANTIES OF MERCHANTABILITY, FITNESS FOR ANY PARTICULAR PURPOSE, OR NON-INFRINGEMENT. BUYER'S EXCLUSIVE REMEDY FOR NON-CONFORMING PRODUCTS DURING THE WARRANTY PERIOD IS LIMITED TO REPAIR, REPLACEMENT OF OR REFUND FOR THE NON-CONFORMING PRODUCT(S) AT SELLER'S SOLE OPTION. THERE IS NO OBLIGATION TO REPAIR, REPLACE OR REFUND FOR PRODUCTS AS THE RESULT OF (I) ACCIDENT, DISASTER OR EVENT OF FORCE MAJEURE, (II) MISUSE, FAULT OR NEGLIGENCE OF OR BY BUYER, (III) USE OF THE PRODUCTS IN A MANNER FOR WHICH THEY WERE NOT DESIGNED, OR (IV) IMPROPER STORAGE AND HANDLING OF THE PRODUCTS. Unless otherwise expressly stated on the Product or in the documentation accompanying the Product, the Product is intended for research only and is not to be used for any other purpose, including without limitation, unauthorized commercial uses, in vitro diagnostic uses, ex vivo or in vivo therapeutic uses, or any type of consumption by or application to human or animals.