

Insulin Monoclonal Antibody (ICBTACLS), Alexa Fluor 488, eBioscience™

Product Details	
Size	25 µg
Species Reactivity	Human, Mouse, Rat
Host/Isotope	Mouse / IgG2a, kappa
Recommended Isotype Control	Mouse IgG2a kappa Isotype Control (eBM2a), Alexa Fluor 488, eBioscience™
Class	Monoclonal
Type	Antibody
Clone	ICBTACLS
Conjugate	Alexa Fluor® 488
Form	Liquid
Concentration	0.5 mg/mL
Purification	Affinity chromatography
Storage buffer	PBS, pH 7.2, with 0.1% gelatin
Contains	0.09% sodium azide
Storage Conditions	4° C, store in dark, DO NOT FREEZE!
RRID	AB_2574468

Applications	Tested	Dilution	Published
Immunohistochemistry (Paraffin) (IHC (P))	✓	5 µg/mL	1 Publication
Immunocytochemistry (ICC)	✓	5 µg/mL	
Immunofluorescence (IF)	✓	5 µg/mL	

Product Specific Information

Description: This ICBTACLS monoclonal antibody reacts with the hormone insulin, responsible for regulation of carbohydrate and fat metabolism. Blood glucose levels are maintained by insulin. Insulin secretion from pancreatic beta-cells within the islets of Langerhans results in uptake of excess glucose from the blood into organs and its storage in the form of glycogen. Patients with type 1 diabetes have an autoimmune destruction of insulin-producing beta-cells in the pancreas, resulting in insulin deficiency and elevated levels of blood glucose. Patients with type 2 diabetes have insulin resistance where insulin becomes less effective at reducing the amount of blood glucose. Insulin is also important for proper endothelial cell function in with respect to vascular elasticity in response to changing blood pressure and plays a role in cognition, learning, and memory.

The ICBTACLS antibody recognizes human, mouse, and rat insulin.

Applications Reported: This ICBTACLS antibody has been reported for use in immunohistochemical staining of formalin-fixed paraffin embedded tissue sections, and microscopy.

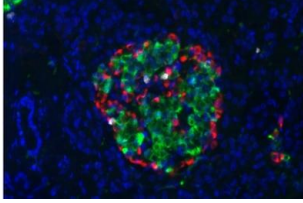
Applications Tested: This ICBTACLS antibody has been tested by immunohistochemistry of formalin-fixed paraffin embedded tissue using low or high pH antigen retrieval and can be used at less than or equal to 5 µg/mL. It is recommended that the antibody

be carefully titrated for optimal performance in the assay of interest.

Excitation: 488 nm; Emission: 519 nm; Laser: Blue Laser.

Filtration: 0.2 µm post-manufacturing filtered.

Product Images For Insulin Monoclonal Antibody (ICBTACLS), Alexa Fluor 488, eBioscience™



Insulin Antibody (53-9769-80) in IHC (P)

Immunohistochemistry of formalin-fixed paraffin embedded human pancreas using 5 µg/mL Anti-Insulin Alexa Fluor® 488 (green), 5 µg/mL Anti-Somatostatin eFluor® 660 (white), and 2.5 µg/mL Anti-Glucagon Biotin followed by 1 µg/mL Streptavidin eFluor® 570 (red). Nuclei are stained with DAPI (blue).

1 Reference

Immunohistochemistry (Paraffin) (1)

Oxidative medicine and cellular longevity

Black Seed Thymoquinone Improved Insulin Secretion, Hepatic Glycogen Storage, and Oxidative Stress in Streptozotocin-Induced Diabetic Male Wistar Rats.

"Published figure using Insulin monoclonal antibody (Product # 53-9769-82) in Immunohistochemistry (Paraffin)"

Authors: Abdelrazek HMA, Kilany OE, Muhammad MAA, Tag HM, Abdelazim AM

Species
Not Applicable

Dilution
Not Cited

Year
2018

For Research Use Only. Not for use in diagnostic procedures. Not for resale without express authorization. Products are warranted to operate or perform substantially in conformance with published Product specifications in effect at the time of sale, as set forth in the Production documentation, specifications and/or accompanying package inserts ("Documentation"). No claim of suitability for use in applications regulated by FDA is made. The warranty provided herein is valid only when used by properly trained individuals. Unless otherwise stated in the Documentation, this warranty is limited to one year from date of shipment when the Product is subjected to normal, proper and intended usage. This warranty does not extend to anyone other than the Buyer. Any model or sample furnished to Buyer is merely illustrative of the general type and quality of goods and does not represent that any Product will conform to such model or sample. NO OTHER WARRANTIES, EXPRESS OR IMPLIED, ARE GRANTED INCLUDING WITHOUT LIMITATION, IMPLIED WARRANTIES OF MERCHANTABILITY, FITNESS FOR ANY PARTICULAR PURPOSE, OR NON INFRINGEMENT. BUYER'S EXCLUSIVE REMEDY FOR NON-CONFORMING PRODUCTS DURING THE WARRANTY PERIOD IS LIMITED TO REPAIR, REPLACEMENT OF OR REFUND FOR THE NON-CONFORMING PRODUCT(S) AT SELLER'S SOLE OPTION. THERE IS NO OBLIGATION TO REPAIR, REPLACE OR REFUND FOR PRODUCTS AS THE RESULT OF (I) ACCIDENT, DISASTER OR EVENT OF FORCE MAJEURE, (II) MISUSE, FAULT OR NEGLIGENCE OF OR BY BUYER, (III) USE OF THE PRODUCTS IN A MANNER FOR WHICH THEY WERE NOT DESIGNED, OR (IV) IMPROPER STORAGE AND HANDLING OF THE PRODUCTS. Unless otherwise expressly stated on the Product or in the documentation accompanying the Product, the Product is intended for research only and is not to be used for any other purpose, including without limitation, unauthorized commercial uses, in vitro diagnostic uses, ex vivo or in vivo therapeutic uses, or any type of consumption by or application to human or animals.