

# Nestin Monoclonal Antibody (10C2), Alexa Fluor 488, eBioscience™

## Product Details

Size	25 µg
Species Reactivity	Human
Published Species	Human
Host/Isotope	Mouse / IgG1
Recommended Isotype Control	Mouse IgG1 kappa Isotype Control (P3.6.2.8.1), Alexa Fluor 488, eBioscience™
Class	Monoclonal
Type	Antibody
Clone	10C2
Conjugate	Alexa Fluor® 488
Form	Liquid
Concentration	0.5 mg/mL
Purification	Affinity chromatography
Storage buffer	PBS, pH 7.2, with 0.1% gelatin
Contains	0.09% sodium azide
Storage Conditions	4° C, store in dark, DO NOT FREEZE!
RRID	AB_1834347

Applications	Tested	Dilution	Published
Flow Cytometry (Flow)	✓	Assay-Dependent	3 Publications
Immunocytochemistry (ICC)	✓	10 µg/mL	
Immunofluorescence (IF)	✓	10 µg/mL	
Immunohistochemistry (IHC)	✓	Assay-Dependent	

## Product Specific Information

**Description:** The monoclonal antibody 10C2 recognizes human nestin (residues 1464-1614). Nestin is a 220-240 kDa Class VI intermediate filament protein that is expressed in stem cells of the developing nervous system. Expression has also been found in pancreatic islet and mesenchymal precursors in addition to cells with angiogenic potential. Upon differentiation, nestin-containing filaments are replaced by cell type-specific intermediate filament proteins, such as GFAP. Expression has been identified in a variety of cancerous cells including glioblastomas and pancreatic tumors. No cross-reactivity to rodent nestins has been observed using the 10C2 antibody.

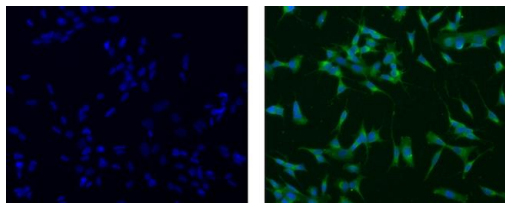
**Applications Reported:** This 10C2 antibody has been reported for use in microscopy, immunocytochemistry, immunohistochemical staining, and flow cytometric analysis.

**Applications Tested:** This 10C2 antibody has been tested by immunocytochemistry of formaldehyde-fixed and permeabilized cells. This can be used at less than or equal to 10 µg/mL. It is recommended that the antibody be carefully titrated for optimal performance in the assay of interest.

Excitation: 488 nm; Emission: 519 nm; Laser: Blue Laser.

Filtration: 0.2 µm post-manufacturing filtered.

## Product Images For Nestin Monoclonal Antibody (10C2), Alexa Fluor 488, eBioscience™



### Nestin Antibody (53-9843-80) in ICC

Immunocytochemistry of fixed and permeabilized SKNSH cells using 10 µg/mL of Mouse IgG1 kappa Isotype Control Alexa Fluor® 488 (Product # 53-4714-42) (left) or 10 µg/mL Anti-Human Nestin Alexa Fluor® 488 (right). Nuclei are stained with DAPI.

## 3 References

### Flow Cytometry (3)

#### Molecular neurobiology

#### Metalloproteinases ADAM10 and ADAM17 Mediate Migration and Differentiation in Glioblastoma Sphere-Forming Cells.

"53-9843 was used in Flow cytometry/Cell sorting to explore the role of the metalloproteinases, ADAM10 and ADAM17, on the adhesive and migratory properties of human glioma sphere-forming cells."

Authors: Siney EJ, Holden A, Casselden E, Bulstrode H, Thomas GJ, Willaime-Morawek S

**Species**  
Human

**Dilution**  
Not Cited

**Year**  
2017

#### Proteomics

#### Histone modification profiling reveals differential signatures associated with human embryonic stem cell self-renewal and differentiation.

"53-9843 was used in Flow cytometry/Cell sorting to highlight subtle epigenetic signatures that allow the prediction of divergent lineage progression even in differentiating cells with similar phenotype and gene expression."

Authors: Bhanu NV, Sidoli S, Garcia BA

**Species**  
Human  
Not Applicable

**Dilution**  
Not Cited  
Not Cited

**Year**  
2016

[View more Flow references on thermofisher.com](#)

For Research Use Only. Not for use in diagnostic procedures. Not for resale without express authorization. Products are warranted to operate or perform substantially in conformance with published Product specifications in effect at the time of sale, as set forth in the Production documentation, specifications and/or accompanying package inserts ("Documentation"). No claim of suitability for use in applications regulated by FDA is made. The warranty provided herein is valid only when used by properly trained individuals. Unless otherwise stated in the Documentation, this warranty is limited to one year from date of shipment when the Product is subjected to normal, proper and intended usage. This warranty does not extend to anyone other than the Buyer. Any model or sample furnished to Buyer is merely illustrative of the general type and quality of goods and does not represent that any Product will conform to such model or sample. NO OTHER WARRANTIES, EXPRESS OR IMPLIED, ARE GRANTED INCLUDING WITHOUT LIMITATION, IMPLIED WARRANTIES OF MERCHANTABILITY, FITNESS FOR ANY PARTICULAR PURPOSE, OR NON INFRINGEMENT. BUYER'S EXCLUSIVE REMEDY FOR NON-CONFORMING PRODUCTS DURING THE WARRANTY PERIOD IS LIMITED TO REPAIR, REPLACEMENT OF OR REFUND FOR THE NON-CONFORMING PRODUCT(S) AT SELLER'S SOLE OPTION. THERE IS NO OBLIGATION TO REPAIR, REPLACE OR REFUND FOR PRODUCTS AS THE RESULT OF (I) ACCIDENT, DISASTER OR EVENT OF FORCE MAJEURE, (II) MISUSE, FAULT OR NEGLIGENCE OF OR BY BUYER, (III) USE OF THE PRODUCTS IN A MANNER FOR WHICH THEY WERE NOT DESIGNED, OR (IV) IMPROPER STORAGE AND HANDLING OF THE PRODUCTS. Unless otherwise expressly stated on the Product or in the documentation accompanying the Product, the Product is intended for research only and is not to be used for any other purpose, including without limitation, unauthorized commercial uses, in vitro diagnostic uses, ex vivo or in vivo therapeutic uses, or any type of consumption by or application to human or animals.