

IRF8 Monoclonal Antibody (V3GYWCH), Alexa Fluor™ 488, eBioscience™

Product Details	
Size	100 µg
Species Reactivity	Human, Mouse
Host/Isotype	Mouse / IgG1, kappa
Recommended Isotype Control	Mouse IgG1 kappa Isotype Control (P3.6.2.8.1), Alexa Fluor™ 488, eBioscience™
Class	Monoclonal
Type	Antibody
Clone	V3GYWCH
Conjugate	Alexa Fluor™ 488
Excitation/Emission Max	499/520 nm
Form	Liquid
Concentration	0.5 mg/mL
Purification	Affinity chromatography
Storage buffer	PBS, pH 7.2
Contains	0.09% sodium azide
Storage conditions	4° C, store in dark, DO NOT FREEZE!
RRID	AB_2784763

Applications	Tested Dilution	Publications
Flow Cytometry (Flow)	0.25 µg/test	2 Publications

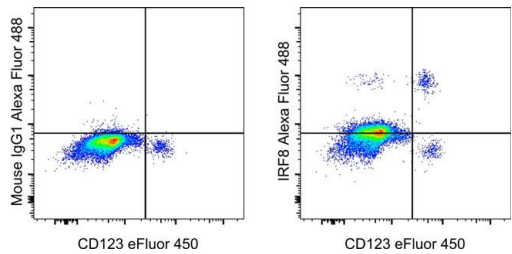
Product Specific Information

Description: The V3GYWCH monoclonal antibody reacts with human and mouse interferon regulatory factor 8 (IRF8; ICSBP). IRF8 is a 50 kDa transcription factor that plays a critical role in the development of dendritic cells (DC). Specifically, IRF8 is essential in the development and differentiation of plasmacytoid DC (pDC) and CD8a+ DC. IRF8-/- mice are deficient in both pDC and CD8a+ DC populations. CD8a- DC are present in normal numbers in IRF8-/- mice but fail to mature upon Toll-like receptor signaling and are functionally impaired in response to in vivo microbial stimulation. IRF8 deficiency does not affect the frequency or viability of DC precursors and as a result retroviral IRF8 transduction restores pDC development from DC progenitors in IRF8-/- mice.

Applications Reported: This V3GYWCH antibody has been reported for use in flow cytometric analysis.

Applications Tested: This V3GYWCH antibody has been tested by flow cytometric analysis of normal human peripheral blood cells. This may be used at less than or equal to 0.25 µg per test. A test is defined as the amount (µg) of antibody that will stain a cell sample in a final volume of 100 µL. Cell number should be determined empirically but can range from 10⁵ to 10⁸ cells /test. It is recommended that the antibody be carefully titrated for optimal performance in the assay of interest.

Excitation: 488 nm; **Emission:** 519 nm; **Laser:** Blue Laser.



IRF8 Antibody (53-9852-82) in Flow

Surface staining of normal human peripheral blood cells with Anti-Human CD123 Monoclonal Antibody, eFluor 450 (Product # 48-1239-42), followed by intracellular staining using the Foxp3/Transcription Factor Staining Buffer Set (Product # 00-5523-00) and protocol with 0.125 µg of Mouse IgG1 kappa Isotype Control, Alexa Fluor 488 (Product # 53-4714-80) (left) or 0.125 µg of IRF8 Monoclonal Antibody, Alexa Fluor 488 (right). Cells in the lymphocyte and monocyte gate were used for analysis.

2 References

Flow Cytometry (2)

<p>Nature communications</p> <p>CD103⁺ cDC1 and endogenous CD8⁺ T cells are necessary for improved CD40L-overexpressing CAR T cell antitumor function.</p> <p>"Published figure using IRF8 monoclonal antibody (Product # 53-9852-82) in Flow Cytometry"</p> <p>Authors: Kuhn NF,Lopez AV,Li X,Cai W,Daniyan AF,Brentjens RJ</p>	<p>Year</p> <p>2020</p>
<p>Cell reports</p> <p>Integrated Cross-Species Analysis Identifies a Conserved Transitional Dendritic Cell Population.</p> <p>"Published figure using IRF8 monoclonal antibody (Product # 53-9852-82) in Flow Cytometry"</p> <p>Authors: Leylek R,Alcántara-Hernández M,Lanzar Z,Lüdtke A,Perez OA,Reizis B,Idoyaga J</p>	<p>Year</p> <p>2019</p>

For Research Use Only. Not for use in diagnostic procedures. Not for resale without express authorization. Products are warranted to operate or perform substantially in conformance with published Product specifications in effect at the time of sale, as set forth in the Production documentation, specifications and/or accompanying package inserts ("Documentation"). No claim of suitability for use in applications regulated by FDA is made. The warranty provided herein is valid only when used by properly trained individuals. Unless otherwise stated in the Documentation, this warranty is limited to one year from date of shipment when the Product is subjected to normal, proper and intended usage. This warranty does not extend to anyone other than the Buyer. Any model or sample furnished to Buyer is merely illustrative of the general type and quality of goods and does not represent that any Product will conform to such model or sample. NO OTHER WARRANTIES, EXPRESS OR IMPLIED, ARE GRANTED INCLUDING WITHOUT LIMITATION, IMPLIED WARRANTIES OF MERCHANTABILITY, FITNESS FOR ANY PARTICULAR PURPOSE, OR NON INFRINGEMENT. BUYER'S EXCLUSIVE REMEDY FOR NON-CONFORMING PRODUCTS DURING THE WARRANTY PERIOD IS LIMITED TO REPAIR, REPLACEMENT OF OR REFUND FOR THE NON-CONFORMING PRODUCT(S) AT SELLER'S SOLE OPTION. THERE IS NO OBLIGATION TO REPAIR, REPLACE OR REFUND FOR PRODUCTS AS THE RESULT OF (I) ACCIDENT, DISASTER OR EVENT OF FORCE MAJEURE, (II) MISUSE, FAULT OR NEGLIGENCE OF OR BY BUYER, (III) USE OF THE PRODUCTS IN A MANNER FOR WHICH THEY WERE NOT DESIGNED, OR (IV) IMPROPER STORAGE AND HANDLING OF THE PRODUCTS. Unless otherwise expressly stated on the Product or in the documentation accompanying the Product, the Product is intended for research only and is not to be used for any other purpose, including without limitation, unauthorized commercial uses, in vitro diagnostic uses, ex vivo or in vivo therapeutic uses, or any type of consumption by or application to human or animals.