

CD20 Monoclonal Antibody (2H7), Alexa Fluor™ 700, eBioscience™

| Product Details | |
|-----------------------------|--|
| Size | 100 Tests |
| Species Reactivity | Human |
| Published Species | Human, Rhesus monkey |
| Host/Isotype | Mouse / IgG2b, kappa |
| Recommended Isotype Control | Mouse IgG2b kappa Isotype Control (eBMG2b), Alexa Fluor™ 700, eBioscience™ |
| Class | Monoclonal |
| Type | Antibody |
| Clone | 2H7 |
| Conjugate | Alexa Fluor™ 700 |
| Excitation/Emission Max | 696/719 nm |
| Form | Liquid |
| Concentration | 5 µL/Test |
| Purification | Affinity chromatography |
| Storage buffer | PBS, pH 7.2, with 0.2% BSA |
| Contains | 0.09% sodium azide |
| Storage conditions | 4° C, store in dark, DO NOT FREEZE! |
| RRID | AB_1963574 |

| Applications | Tested Dilution | Publications |
|------------------------------|---------------------|-----------------|
| Immunohistochemistry (IHC) | - | 4 Publications |
| Immunocytochemistry (ICC/IF) | - | 1 Publication |
| Flow Cytometry (Flow) | 5 µL (0.06 µg)/test | 11 Publications |

Product Specific Information

Description: The 2H7 monoclonal antibody reacts with human CD20, a 33-36 kDa transmembrane protein. CD20 is expressed by developing B cells as well as mature B cells but not plasma cells. CD20 has been detected at low levels on a small subset of mature T cells. It is suggested that CD20 plays a role in B-cell activation.

Applications Reported: This 2H7 antibody has been reported for use in flow cytometric analysis.

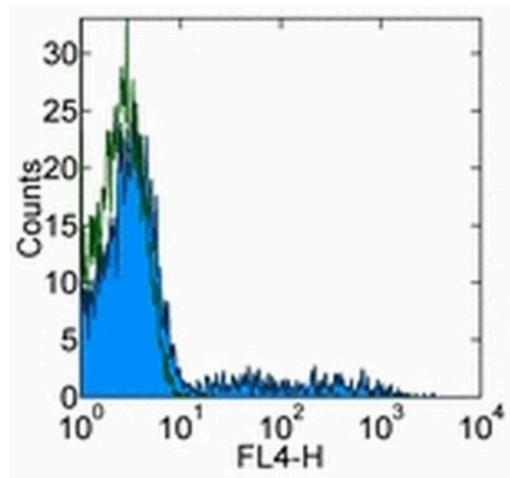
Applications Tested: This 2H7 antibody has been pre-titrated and tested by flow cytometric analysis of normal human peripheral blood cells. This can be used at 5 µL (0.06 µg) per test. A test is defined as the amount (µg) of antibody that will stain a cell sample in a final volume of 100 µL. Cell number should be determined empirically but can range from 10⁵ to 10⁸ cells/test.

Alexa Fluor® 700 emits at 723 nm and can be excited with the red laser (633 nm). Most instruments will require a 685 LP mirror and 710/20 filter. Please make sure that your instrument is capable of detecting this fluorochrome.

Excitation: 633-647 nm; Emission: 723 nm; Laser: Red Laser.

Filtration: 0.2 µm post-manufacturing filtered.

Product Images For CD20 Monoclonal Antibody (2H7), Alexa Fluor™ 700, eBioscience™



CD20 Antibody (56-0209-42) in Flow
Staining of normal human peripheral blood cells with staining buffer (autofluorescence) (open histogram) or Anti-Human CD20 Alexa Fluor® 700 (filled histogram). Cells in the lymphocyte gate were used for analysis.

[View more figures on thermofisher.com](#)

16 References

Immunohistochemistry (4)

Frontiers in immunology

IL-33 Alarmin and Its Active Proinflammatory Fragments Are Released in Small Intestine in Celiac Disease.

"Published figure using CD20 monoclonal antibody (Product # 56-0209-42) in Immunohistochemistry"

Authors: Perez F,Ruera CN,Miculan E,Carasi P,Dubois-Camacho K,Garbi L,Guzman L,Hermoso MA,Chirido FG

Year
2021

Stem cell research & therapy

Relative safety of various spermatogenic stem cell purification methods for application in spermatogenic stem cell transplantation.

"Published figure using CD20 monoclonal antibody (Product # 56-0209-42) in Immunocytochemistry"

Authors: Tian J,Ma K,Pei CB,Zhang SH,Li X,Zhou Y,Yan B,Wang HY,Ma LH

Year
2019

[View more IHC references on thermofisher.com](#)

Immunocytochemistry (1)

Stem cell research & therapy

Relative safety of various spermatogenic stem cell purification methods for application in spermatogenic stem cell transplantation.

"Published figure using CD20 monoclonal antibody (Product # 56-0209-42) in Immunocytochemistry"

Authors: Tian J,Ma K,Pei CB,Zhang SH,Li X,Zhou Y,Yan B,Wang HY,Ma LH

Year
2019

Flow Cytometry (11)

Aging and disease

A Soluble NK-CAR Mediates the Specific Cytotoxicity of NK Cells toward the Target CD20⁺ Lymphoma Cells.

"Published figure using CD20 monoclonal antibody (Product # 56-0209-42) in Flow Cytometry"

Authors: Liu R,Luo Q,Luo W,Wan L,Zhu Q,Yin X,Lu X,Song Z,Wei L,Xiang Z,Zou Y

Year
2022

[View more Flow references on thermofisher.com](#)

More applications with references on thermofisher.com

For Research Use Only. Not for use in diagnostic procedures. Not for resale without express authorization. Products are warranted to operate or perform substantially in conformance with published Product specifications in effect at the time of sale, as set forth in the Production documentation, specifications and/or accompanying package inserts ("Documentation"). No claim of suitability for use in applications regulated by FDA is made. The warranty provided herein is valid only when used by properly trained individuals. Unless otherwise stated in the Documentation, this warranty is limited to one year from date of shipment when the Product is subjected to normal, proper and intended usage. This warranty does not extend to anyone other than the Buyer. Any model or sample furnished to Buyer is merely illustrative of the general type and quality of goods and does not represent that any Product will conform to such model or sample. NO OTHER WARRANTIES, EXPRESS OR IMPLIED, ARE GRANTED INCLUDING WITHOUT LIMITATION, IMPLIED WARRANTIES OF MERCHANTABILITY, FITNESS FOR ANY PARTICULAR PURPOSE, OR NON-INFRINGEMENT. BUYER'S EXCLUSIVE REMEDY FOR NON-CONFORMING PRODUCTS DURING THE WARRANTY PERIOD IS LIMITED TO REPAIR, REPLACEMENT OF OR REFUND FOR THE NON-CONFORMING PRODUCT(S) AT SELLER'S SOLE OPTION. THERE IS NO OBLIGATION TO REPAIR, REPLACE OR REFUND FOR PRODUCTS AS THE RESULT OF (I) ACCIDENT, DISASTER OR EVENT OF FORCE MAJEURE, (II) MISUSE, FAULT OR NEGLIGENCE OF OR BY BUYER, (III) USE OF THE PRODUCTS IN A MANNER FOR WHICH THEY WERE NOT DESIGNED, OR (IV) IMPROPER STORAGE AND HANDLING OF THE PRODUCTS. Unless otherwise expressly stated on the Product or in the documentation accompanying the Product, the Product is intended for research only and is not to be used for any other purpose, including without limitation, unauthorized commercial uses, in vitro diagnostic uses, ex vivo or in vivo therapeutic uses, or any type of consumption by or application to human or animals.