

CD28 Monoclonal Antibody (CD28.2), Alexa Fluor™ 700, eBioscience™

Product Details	
Size	100 Tests
Species Reactivity	Human
Host/Isotype	Mouse / IgG1, kappa
Recommended Isotype Control	Mouse IgG1 kappa Isotype Control (P3.6.2.8.1), Alexa Fluor™ 700, eBioscience™
Class	Monoclonal
Type	Antibody
Clone	CD28.2
Conjugate	Alexa Fluor™ 700
Excitation/Emission Max	696/719 nm
Form	Liquid
Concentration	5 µL/Test
Purification	Affinity chromatography
Storage buffer	PBS, pH 7.2, with 0.2% BSA
Contains	0.09% sodium azide
Storage conditions	4° C, store in dark, DO NOT FREEZE!
RRID	AB_2815230

Applications	Tested Dilution	Publications
Flow Cytometry (Flow)	5 µL (0.125 µg)/test	11 Publications
Functional Assay (FN)	-	1 Publication

Product Specific Information

Description: The CD28.2 monoclonal antibody reacts with the human CD28 molecule, a 44 kDa homodimer expressed by thymocytes, mature T cells and plasma cells. CD28 is a ligand for CD80 (B7-1) and CD86 (B7-2) and is a potent co-stimulator of T cells. Signaling through CD28 augments IL-2 and IL-2 receptor expression as well as cytotoxicity of CD3-activated T cells.

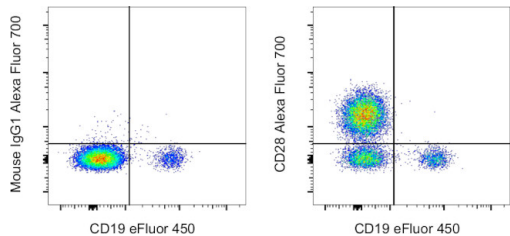
Applications Reported: This CD28.2 antibody has been reported for use in flow cytometric analysis.

Applications Tested: This CD28.2 antibody has been pre-diluted and tested by flow cytometric analysis of normal human peripheral blood cells. This may be used at 5 µL (0.125 µg) per test. A test is defined as the amount (µg) of antibody that will stain a cell sample in a final volume of 100 µL. Cell number should be determined empirically but can range from 10⁵ to 10⁸ cells/test.

Alexa Fluor 700 emits at 723 nm and can be excited with the red laser (633-647 nm). Most instruments will require a 685 LP mirror and 710/20 band pass filter. Please make sure that your instrument is capable of detecting this fluorochrome.

Excitation: 633-647 nm; Emission: 723 nm; Laser: Red Laser

Product Images For CD28 Monoclonal Antibody (CD28.2), Alexa Fluor™ 700, eBioscience™



CD28 Antibody (56-0289-42) in Flow
Normal human peripheral blood cells were stained with CD19 Monoclonal Antibody, eFluor 450 (Product # 48-0199-42) and Mouse IgG1 kappa Isotype Control, Alexa Fluor 700 (Product # 56-4714-80) (left) or CD28 Monoclonal Antibody, Alexa Fluor 700 (right). Cells in the lymphocyte gate were used for analysis.

View more figures on thermofisher.com

12 References

Flow Cytometry (11)

Frontiers in immunology	Year 2023
CHI3L1 enhances melanoma lung metastasis <i>via</i> regulation of T cell co-stimulators and CTLA-4/B7 axis.	
"Published figure using CD28 monoclonal antibody (Product # 56-0289-42) in Flow Cytometry"	
Authors: Ma B,Kamle S,Akosman B,Khan H,Lee CM,Lee CG,Elias JA	
Frontiers in immunology	Year 2021
Differences in Maturation Status and Immune Phenotypes of Circulating Helios⁺ and Helios⁻ Tregs and Their Disrupted Correlations With Monocyte Subsets in Autoantibody-Positive T1D Individuals.	
"Published figure using CD28 monoclonal antibody (Product # 56-0289-42) in Flow Cytometry"	
Authors: Zhang Y,Zhang J,Shi Y,Shen M,Lv H,Chen S,Feng Y,Chen H,Xu X,Yang T,Xu K	

View more Flow references on thermofisher.com

Functional Assay (1)

ImmunoHorizons	Year 2020
RAB11FIP5-Deficient Mice Exhibit Cytokine-Related Transcriptomic Signatures.	
"Published figure using CD28 monoclonal antibody (Product # 56-0289-42) in Functional assay"	
Authors: Li D,Bradley T,Cain DW,Pedroza-Pacheco I,Aggelakopoulou M,Parks R,Barr M,Xia SM,Scearce R,Bowman C,Stevens G,Newman A,Hora B,Chen Y,Riebe K,Wang Y,Sempowski G,Saunders KO,Borrow P,Haynes BF	

More applications with references on thermofisher.com

For Research Use Only. Not for use in diagnostic procedures. Not for resale without express authorization. Products are warranted to operate or perform substantially in conformance with published Product specifications in effect at the time of sale, as set forth in the Production documentation, specifications and/or accompanying package inserts ("Documentation"). No claim of suitability for use in applications regulated by FDA is made. The warranty provided herein is valid only when used by properly trained individuals. Unless otherwise stated in the Documentation, this warranty is limited to one year from date of shipment when the Product is subjected to normal, proper and intended usage. This warranty does not extend to anyone other than the Buyer. Any model or sample furnished to Buyer is merely illustrative of the general type and quality of goods and does not represent that any Product will conform to such model or sample. NO OTHER WARRANTIES, EXPRESS OR IMPLIED, ARE GRANTED INCLUDING WITHOUT LIMITATION, IMPLIED WARRANTIES OF MERCHANTABILITY, FITNESS FOR ANY PARTICULAR PURPOSE, OR NON-INFRINGEMENT. BUYER'S EXCLUSIVE REMEDY FOR NON-CONFORMING PRODUCTS DURING THE WARRANTY PERIOD IS LIMITED TO REPAIR, REPLACEMENT OF OR REFUND FOR THE NON-CONFORMING PRODUCT(S) AT SELLER'S SOLE OPTION. THERE IS NO OBLIGATION TO REPAIR, REPLACE OR REFUND FOR PRODUCTS AS THE RESULT OF (I) ACCIDENT, DISASTER OR EVENT OF FORCE MAJEURE, (II) MISUSE, FAULT OR NEGLIGENCE OF OR BY BUYER, (III) USE OF THE PRODUCTS IN A MANNER FOR WHICH THEY WERE NOT DESIGNED, OR (IV) IMPROPER STORAGE AND HANDLING OF THE PRODUCTS. Unless otherwise expressly stated on the Product or in the documentation accompanying the Product, the Product is intended for research only and is not to be used for any other purpose, including without limitation, unauthorized commercial uses, in vitro diagnostic uses, ex vivo or in vivo therapeutic uses, or any type of consumption by or application to human or animals.